

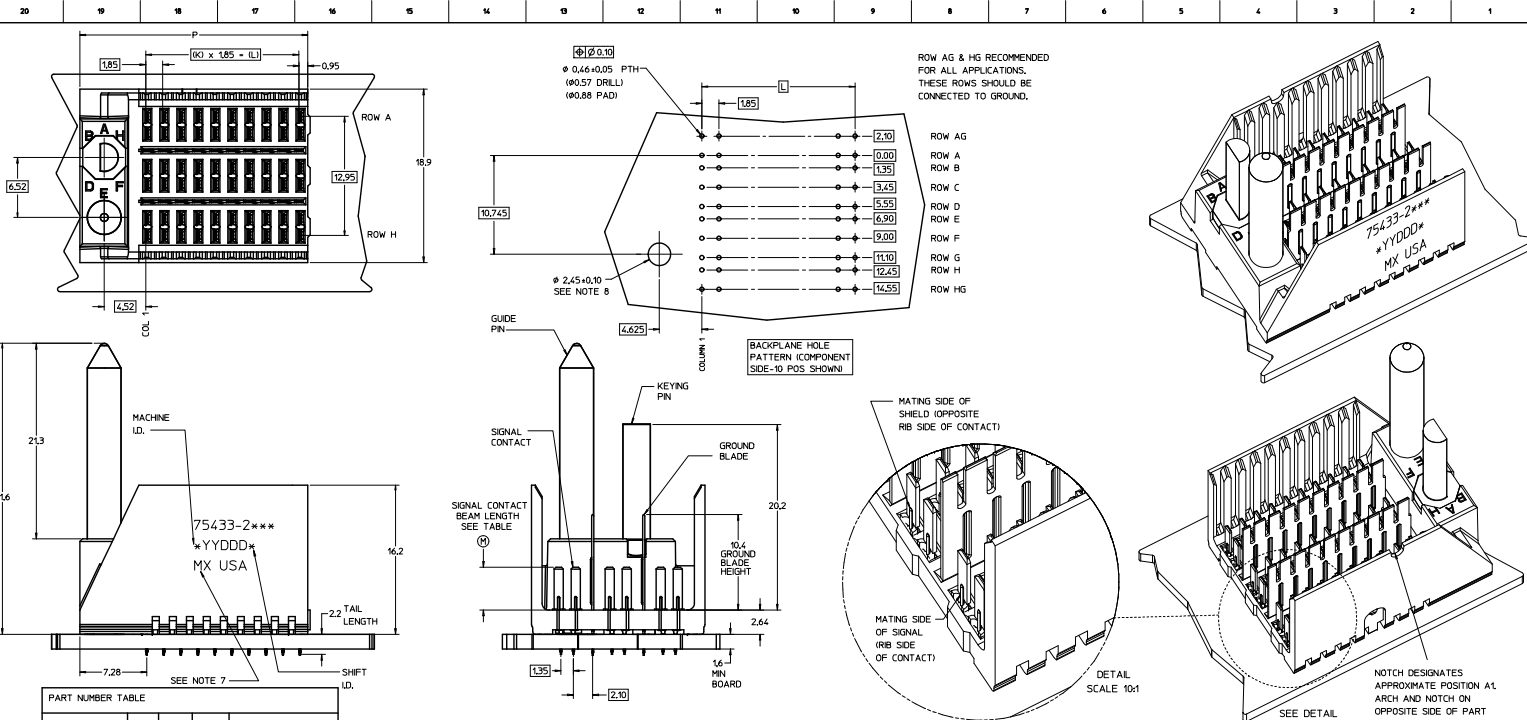
Excellent Integrated System Limited

Stocking Distributor

Click to view price, real time Inventory, Delivery & Lifecycle Information:

[Molex Connector Corporation](#)
[0754332205](#)

For any questions, you can email us directly:
sales@integrated-circuit.com

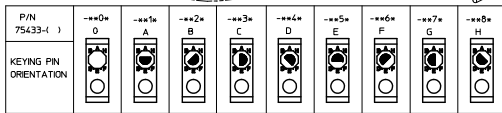


ASSY PART NO.	K	L	P	TOTAL NO. OF DIFFERENTIAL PAIRS
75433-21**	9	16.25	24.78	30
75433-22**	24	44.40	52.53	75
75433-25**	4	7.40	35.53	35

THE PRIMARY CARTON WITH A LABEL STATING 'ELV AND ROHS COMPLAINT' IS LEAD FREE. CARTONS WITHOUT THIS LABEL MAY CONTAIN LEAD.

- NOTES:**
- MATERIAL: HOUSING - LIQUID CRYSTAL POLYMER (LCP) GLASS-FILLED. UL 94V-0. COLOR - GRAY. SIGNAL CONTACT AND GROUND BLADE - HIGH PERFORMANCE COPPER ALLOY.
 - FINISHES: SELECTIVE GOLD (Au) ON CONTACT AREA, SELECTIVE MATTE TIN (Sn) ON PCB TAILS, NICKEL (Ni) OVERALL.
 - THIS PART CONFORMS TO MOLEX PRODUCT SPECIFICATION PS-75221-999.
 - FOR MIXED CONTACT MATING LENGTHS CONSULT MOLEX FOR AVAILABILITY. CONTACT PAIRS MUST BE THE SAME LENGTH.
 - FOR SPECIFIC PART NUMBER AND MATING INFORMATION PLEASE REFER TO CHART.
 - PACKAGE PER PK-70873-572.
 - EITHER MARK PART NUMBER AND DATE CODE APPROXIMATELY WHERE SHOWN OR PLACE A LABEL ON THE TUBE.
 - OPTIONAL HOLE LOCATION FOR GROUNDED GUIDE PIN OR ADDITIONAL GUIDE PIN SUPPORT. FOR GROUNDED GUIDE PIN HOLE TO BE PLATED, DRILL SIZE #258, PAD SIZE #550.
 - THESE PARTS CONFORM TO MOLEX COSMETIC SPECIFICATION PS-45499-002 CLASS B.
 - HAPS MOLEX ADVANCED PLATING SYSTEM.

PIN LENGTH DIM #1	GOLD (Au) THICKNESS micrometers
0-3.55 mm	0.25 (HAPS)
1-4.55 mm	
2-5.55 mm	0.76
3-3.55 mm	
4-4.55 mm	
5-5.55 mm	
6-3.55 mm	
6-4.55 mm	1.27
9-5.55 mm	



REV TO LEAD-FREE EC MOL 07/03-9/05 D DRWNGS 20/02/05 CHKD/MATL 20/02/05 APPROVALS 20/02/05 MKT	QUALITY SYMBOLS	GENERAL TOLERANCES (UNLESS SPECIFIED)	DIMENSION STYLE	SCALE	DESIGN UNITS	THIRD ANGLE PROJECTION
	4 PLACES ±0.15	mm INCH	MM ONLY	5:1	METRIC	☉
	3 PLACES ±0.25		DRAWN BY	DATE	TITLE	
	2 PLACES ±0.38		CHECKED BY	DATE	GBX 3-PAIR LF LEFT END BACKPLANE SALES ASSEMBLY	
	1 PLACE ±		APPROVED BY	DATE		
	0 PLACE ±		CBI XLER	2005/02/24		
		ANGULAR ±1/2°	MATERIAL NO.	SEE CHART	DOCUMENT NO.	SHEET NO.
		DRAFT WHERE APPLICABLE MUST REMAIN WITHIN DIMENSIONS	SIZE	D THIS DRAWING CONTAINS INFORMATION THAT IS PROPRIETARY TO MOLEX INCORPORATED AND SHOULD NOT BE USED WITHOUT WRITTEN PERMISSION	SD-75433-210	1 OF 1