

## Excellent Integrated System Limited

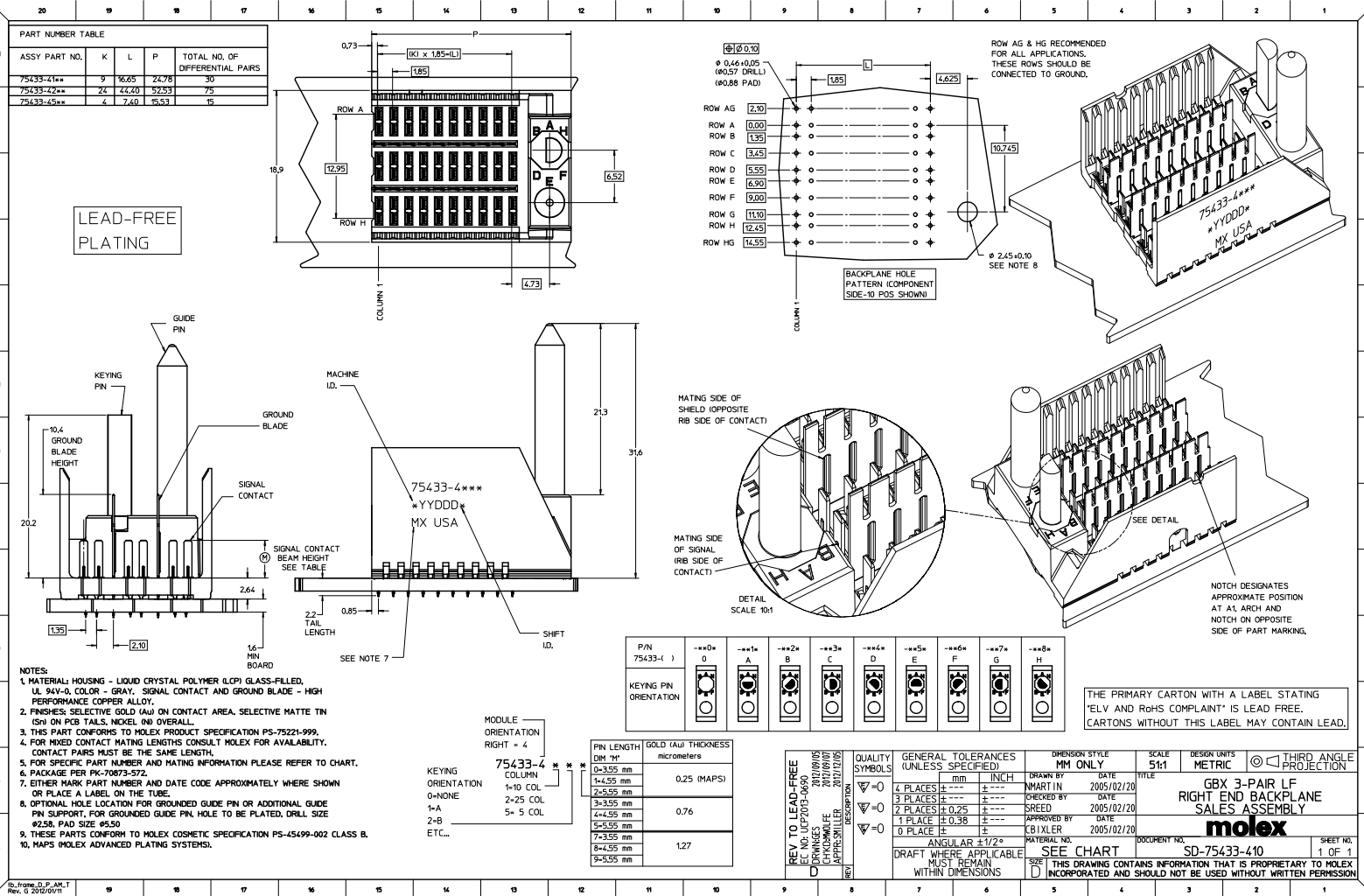
Stocking Distributor

Click to view price, real time Inventory, Delivery & Lifecycle Information:

[Molex Connector Corporation](#)  
[0754334105](#)

For any questions, you can email us directly:

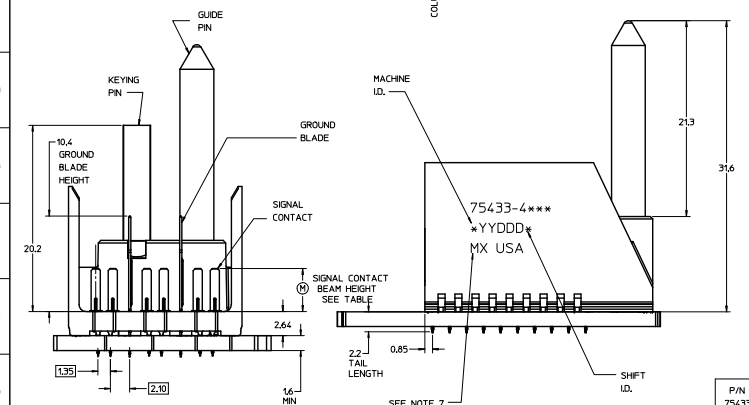
[sales@integrated-circuit.com](mailto:sales@integrated-circuit.com)



**PART NUMBER TABLE**

ASSY PART NO.	K	L	P	TOTAL NO. OF DIFFERENTIAL PAIRS
75433-41**	9	16,05	24,78	30
75433-42**	24	44,40	52,53	75
75433-45**	4	7,40	15,53	16

LEAD-FREE PLATING



- NOTES:**
1. MATERIAL: HOUSING - LIQUID CRYSTAL POLYMER (LCP) GLASS-FILLED, UL 94V-0, COLOR - GRAY. SIGNAL CONTACT AND GROUND BLADE - HIGH PERFORMANCE COPPER ALLOY.
  2. FINISHES: SELECTIVE GOLD (Au) ON CONTACT AREA, SELECTIVE MATTE TIN (Sn) ON PCB TAILS, NICKEL (Ni) OVERALL.
  3. THIS PART CONFORMS TO MOLEX PRODUCT SPECIFICATION PS-75221-999.
  4. FOR MIXED CONTACT MATING LENGTHS CONSULT MOLEX FOR AVAILABILITY. CONTACT PAIRS MUST BE THE SAME LENGTH.
  5. FOR SPECIFIC PART NUMBER AND MATING INFORMATION PLEASE REFER TO CHART.
  6. PACKAGE PER PK-70873-572.
  7. EITHER MARK PART NUMBER AND DATE CODE APPROXIMATELY WHERE SHOWN OR PLACE A LABEL ON THE TUBE.
  8. OPTIONAL HOLE LOCATION FOR GROUNDED GUIDE PIN OR ADDITIONAL GUIDE PIN SUPPORT, FOR GROUNDED GUIDE PIN, HOLE TO BE PLATED, DRILL SIZE #258, PAD SIZE #559.
  9. THESE PARTS CONFORM TO MOLEX COSMETIC SPECIFICATION PS-45499-002 CLASS B.
  10. MAPS (MOLEX ADVANCED PLATING SYSTEMS).

MODULE ORIENTATION RIGHT - 4

KEYING ORIENTATION  
 0-NONE  
 1-A  
 2-B  
 ETC...

PIN LENGTH (mm)	GOLD (Au) THICKNESS (micrometers)
0-3.55	0.25 (MAPS)
1-4.55	
2-5.55	
3-6.55	0.76
4-7.55	
5-8.55	
6-9.55	1.27

P/N	---0	---1	---2	---3	---4	---5	---6	---7	---8
75433(-)	0	A	B	C	D	E	F	G	H
KEYING PIN ORIENTATION									

THE PRIMARY CARTON WITH A LABEL STATING 'ELV AND RoHS COMPLIANT' IS LEAD FREE. CARTONS WITHOUT THIS LABEL MAY CONTAIN LEAD.

<b>REV TO LEAD-FREE</b> EC NO. UZF703-0620 DRAWINGS 2012/09/05 CHECKED BY 2012/09/07 APPROVED BY 2012/07/05 DESIGNED BY	<b>QUALITY SYMBOLS</b> ∇=0 ∇=0 ∇=0	<b>GENERAL TOLERANCES (UNLESS SPECIFIED)</b> 4 PLACES ±--- mm 3 PLACES ±--- INCH 2 PLACES ±0.25 mm 1 PLACE ±0.38 mm 0 PLACES ±--- mm ANGULAR ±1/2°	<b>DIMENSION STYLE</b> MM ONLY	<b>SCALE</b> 5:1	<b>DESIGN UNITS</b> METRIC	<b>THIRD ANGLE PROJECTION</b> 
	DRAWN BY: NMARTIN CHECKED BY: SREED APPROVED BY: CBIXLER DATE: 2005/02/20	<b>TITLE</b> GBX 3-PAIR LF RIGHT END BACKPLANE SALES ASSEMBLY	<b>MATERIAL NO.</b> SEE CHART	<b>DOCUMENT NO.</b> SD-75433-410	<b>SHEET NO.</b> 1 OF 1	
	DRAFT WHERE APPLICABLE MUST REMAIN WITHIN DIMENSIONS					
	THIS DRAWING CONTAINS INFORMATION THAT IS PROPRIETARY TO MOLEX INCORPORATED AND SHOULD NOT BE USED WITHOUT WRITTEN PERMISSION					