

## Excellent Integrated System Limited

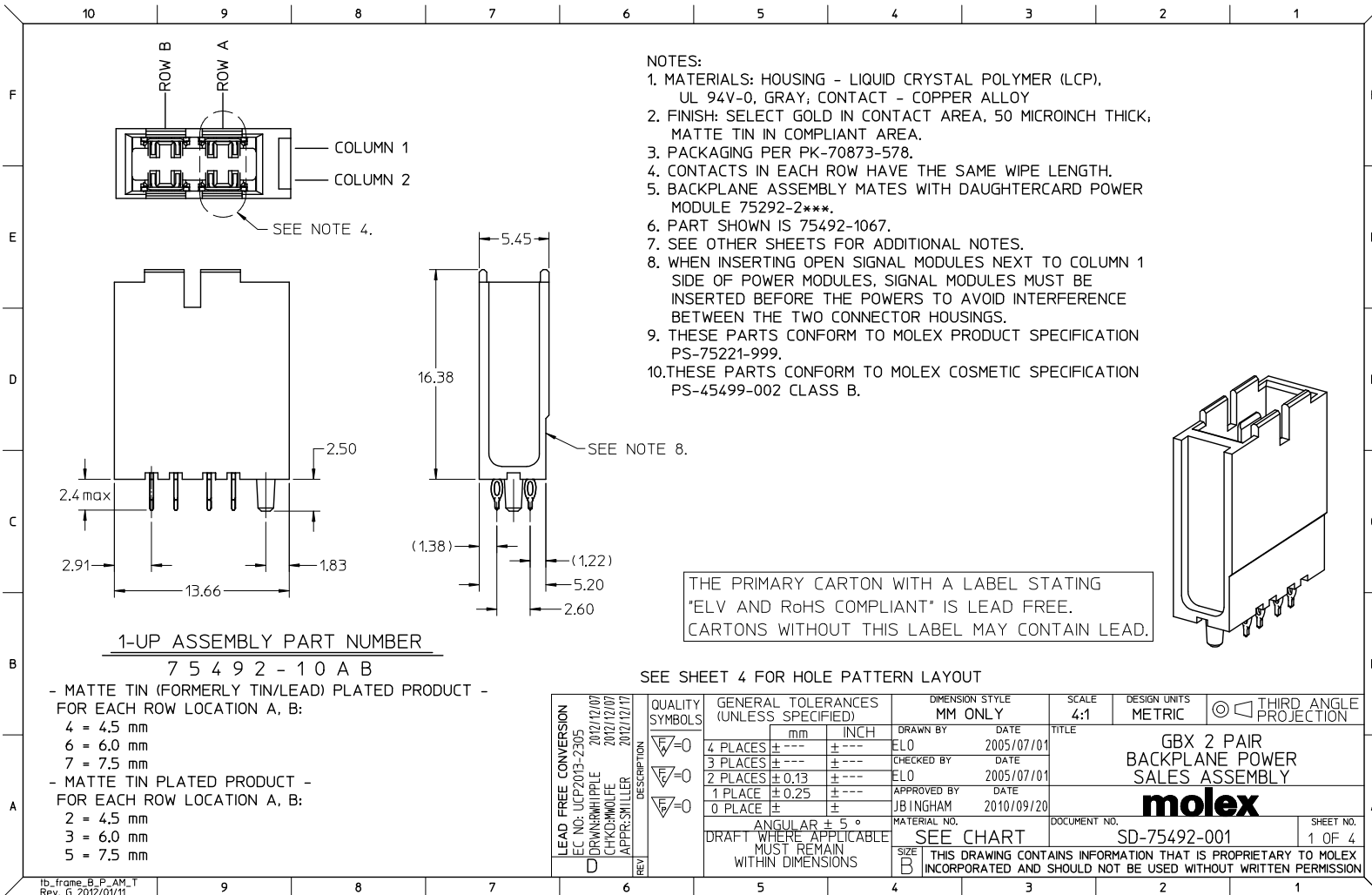
Stocking Distributor

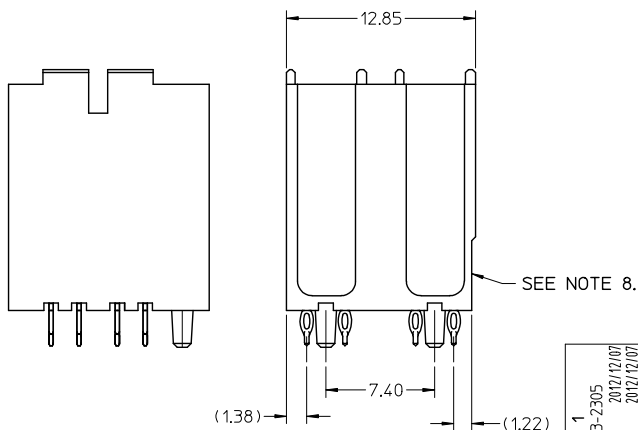
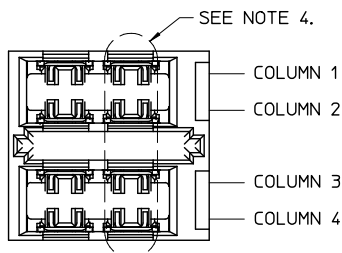
Click to view price, real time Inventory, Delivery & Lifecycle Information:

[Molex Connector Corporation](#)  
[0754921035](#)

For any questions, you can email us directly:

[sales@integrated-circuit.com](mailto:sales@integrated-circuit.com)





2-UP ASSEMBLY PART NUMBER

7 5 4 9 2 - 2 0 A B

- MATTE TIN (FORMERLY TIN/LEAD) PLATED PRODUCT -  
FOR EACH ROW LOCATION A, B:

4 = 4.5 mm

6 = 6.0 mm

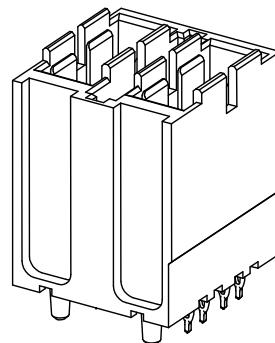
7 = 7.5 mm

- MATTE TIN PLATED PRODUCT -  
FOR EACH ROW LOCATION A, B:

2 = 4.5 mm

3 = 6.0 mm

5 = 7.5 mm



SEE SHEET 1 FOR ADDITIONAL INFORMATION  
CHECK WITH PRODUCT MANAGER FOR AVAILABILITY

SEE SHEET 1 EC NO: UCP2013-2305 DRAWN BY: DR/INR/H/PLE CHKD BY: CH/K/M/L/E APPR: SM/LLER 2012/12/07 2012/12/07 2012/12/17	DESCRIPTION	QUALITY SYMBOLS  ▽=0  ▽=0  ▽=0	GENERAL TOLERANCES (UNLESS SPECIFIED)		DIMENSION STYLE MM ONLY		SCALE 4:1	DESIGN UNITS METRIC	THIRD ANGLE PROJECTION	
					DRAWN BY ELO	DATE 2005/07/01	TITLE  GBX 2 PAIR BACKPLANE POWER SALES ASSEMBLY  <b>molex</b>  SD-75492-001			
					CHECKED BY ELO	DATE 2005/07/01				
					APPROVED BY JB INGHAM	DATE 2010/09/20				
					MATERIAL NO.					
					DOCUMENT NO.					
			ANGULAR ± 5 °		SEE CHART		SHEET NO. 2 OF 4			
			DRAFT WHERE APPLICABLE MUST REMAIN WITHIN DIMENSIONS		SIZE B		THIS DRAWING CONTAINS INFORMATION THAT IS PROPRIETARY TO MOLEX INCORPORATED AND SHOULD NOT BE USED WITHOUT WRITTEN PERMISSION			

