

Excellent Integrated System Limited

Stocking Distributor

Click to view price, real time Inventory, Delivery & Lifecycle Information:

[Molex Connector Corporation](#)
[0755455000](#)

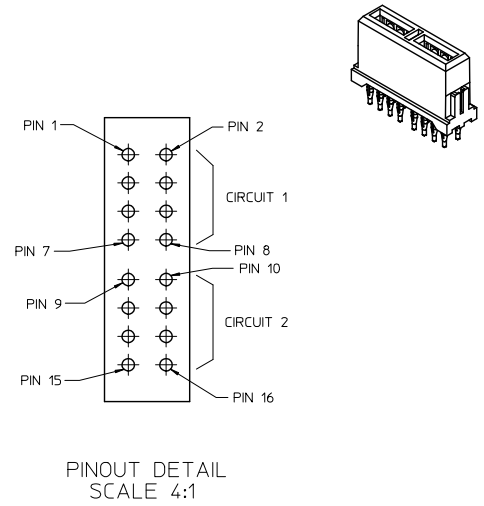
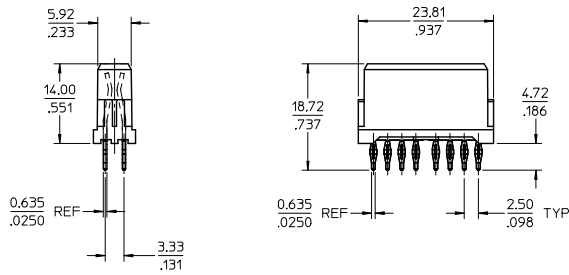
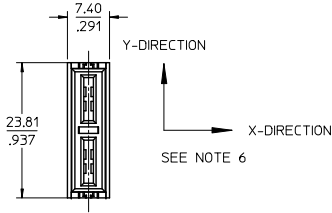
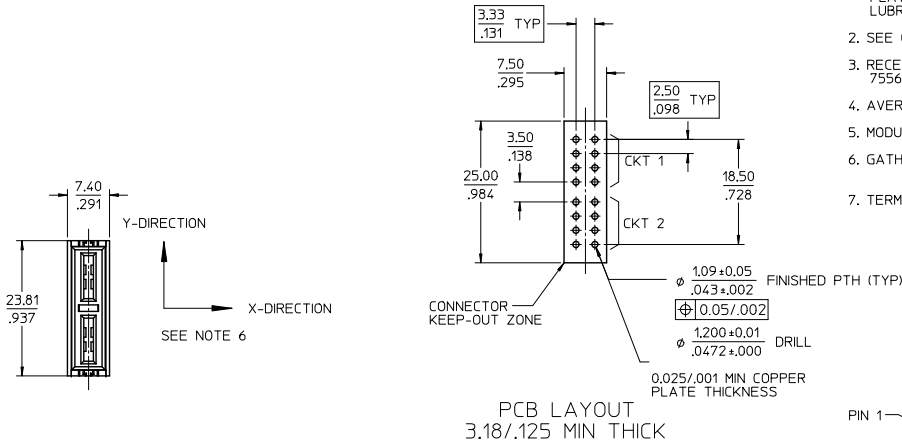
For any questions, you can email us directly:

sales@integrated-circuit.com

PART NUMBER	PLATING
75545-5000	30μ INCH MIN SELECT HARD GOLD IN CONTACT AREA WITH 100μ INCH MIN SELECT TIN IN TAIL AREA OVER 50μ INCH MIN NICKEL OVERALL

NOTES:

1. MATERIALS:
- HOUSING: 30% GLASS FILLED, LCP 94V-0, COLOR: BLACK
- TERMINALS: COPPER ALLOY
PLATING: PER ES-88 - SEE CHART
LUBRICATION: EB1 IN CONTACT AREA
2. SEE CHART FOR REFERENCE DOCUMENTS
3. RECEPTACLE MATES WITH PLUG ASSEMBLIES: 75561-5000, 75561-5001, 75561-1500 & 75561-1501
4. AVERAGE INSERTION FORCE INTO PCB IS 8.2 Kg/18 LBS PER TAIL
5. MODULE ASSEMBLY IS RoHS COMPLIANT
6. GATHERABILITY: ±0.65/0.26 X-DIRECTION
±1.30/0.51 Y-DIRECTION
7. TERMINAL RETENTION INTO HOUSING .45Kg/1.0 LB



REFERENCE DOCUMENTS	
PS-75431-999	PRODUCT SPECIFICATION: PERFORMANCE AND RATINGS
SD-75541-***	MODULE CONFIGURATION DRAWING
AS-75541-0000	APPLICATION SPECIFICATION

REMOVED PAN FROM CHART EC NO: UCP2014-1914 DRAWN: JUILLES 2015/10/30 CHK: KHANDRA 2015/10/30 APATEL 2015/11/17	QUALITY SYMBOLS	GENERAL TOLERANCES (UNLESS SPECIFIED)	DIMENSION STYLE	SCALE	DESIGN UNITS	THIRD ANGLE PROJECTION
	▽=0	4 PLACES ± --- INCH	MM/IN	2:1	METRIC	
	▽=0	3 PLACES ± --- ±.008				
	▽=0	2 PLACES ± 0.20 ±.013				
		1 PLACE ± 0.33 ± ---				
		ANGULAR ± 1/2°				
		DRAFT WHERE APPLICABLE MUST REMAIN WITHIN DIMENSIONS				
			MATERIAL NO.	DOCUMENT NO.	TITLE	
			SEE CHART	SD-75545-100	POWERMASS 80 AMP MODULE RECEPTACLE	
					MOLEX INCORPORATED	
					SHEET NO. 1 OF 1	