

Excellent Integrated System Limited

Stocking Distributor

Click to view price, real time Inventory, Delivery & Lifecycle Information:

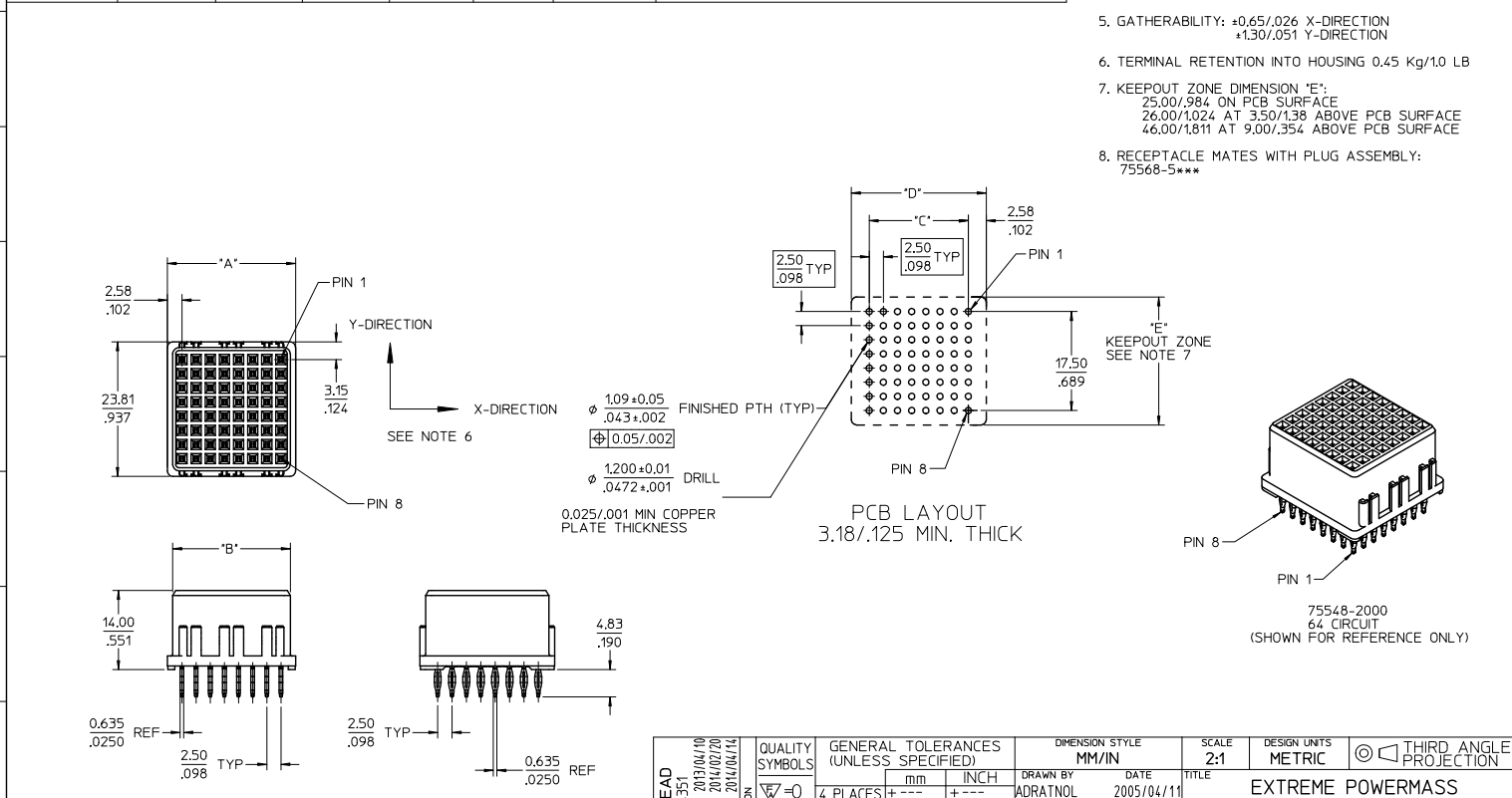
[Molex Connector Corporation](#)
[0755486024](#)

For any questions, you can email us directly:

sales@integrated-circuit.com

PART NUMBER	CIRCUIT SIZE	DIM "A"	DIM "B"	DIM "C"	DIM "D"	MATING MODULE
75548-6000	64	22.66/892	20.76/817	17.50/689	27.50/108	75568-1000
75548-6056	56	20.16/794	18.26/719	15.00/591	25.00/984	75568-1056
75548-6048	48	17.66/695	15.26/620	12.50/492	22.50/885	75568-1048
75548-6040	40	15.16/597	13.26/522	10.00/394	20.00/787	75568-1040
75548-6032	32	12.66/498	10.76/424	7.50/295	17.50/689	75568-1032
75548-6024	24	10.16/400	8.26/325	5.00/197	15.00/590	75568-1024

PLATING		NOTES:
		<ol style="list-style-type: none"> MATERIALS: <ul style="list-style-type: none"> HOUSING: 30% GLASS FILLED, LCP 94V-0, COLOR: BLACK TERMINALS: COPPER ALLOY SEE CHART FOR REFERENCE DOCUMENTS AVERAGE INSERTION FORCE INTO PCB IS 8.2 Kg/18 LBS PER TAIL MODULE ASSEMBLY IS RoHS COMPLIANT GATHERABILITY: ±0.65/026 X-DIRECTION ±1.30/051 Y-DIRECTION TERMINAL RETENTION INTO HOUSING 0.45 Kg/10 LB KEEPOUT ZONE DIMENSION "E": 25.00/984 ON PCB SURFACE 26.00/1024 AT 3.50/138 ABOVE PCB SURFACE 46.00/1811 AT 9.00/354 ABOVE PCB SURFACE RECEPTACLE MATES WITH PLUG ASSEMBLY: 75568-5***



REFERENCE DOCUMENTS	
PS-75431-999	PRODUCT SPECIFICATION: PERFORMANCE AND RATINGS
SD-75541-***	MODULE CONFIGURATION DRAWING
AS-75541-0000	APPLICATION SPECIFICATION

QUALITY SYMBOLS	GENERAL TOLERANCES (UNLESS SPECIFIED)		DIMENSION STYLE		SCALE	DESIGN UNITS	THIRD ANGLE PROJECTION
	mm	INCH	MM/IN	DATE	2:1	METRIC	
▽=0	4 PLACES ±---	±---	DRAWN BY	DATE	EXTREME POWERMASS SIGNAL MODULE RECEPTACLE 		
▽=0	3 PLACES ±---	±.008	CHECKED BY	DATE			
▽=0	2 PLACES ±0.20	±.013	APPROVED BY	DATE			
▽=0	1 PLACE ±0.33	±---	DATE	DATE			
	0 PLACE ±	±	MATERIAL NO.	DATE	DOCUMENT NO.	SD-75548-100	
	ANGULAR ±1/2°		SEE CHART		SHEET NO.		1 OF 1
DRAFT WHERE APPLICABLE MUST REMAIN WITHIN DIMENSIONS		SIZE C		THIS DRAWING CONTAINS INFORMATION THAT IS PROPRIETARY TO MOLEX INCORPORATED AND SHOULD NOT BE USED WITHOUT WRITTEN PERMISSION			