

Excellent Integrated System Limited

Stocking Distributor

Click to view price, real time Inventory, Delivery & Lifecycle Information:

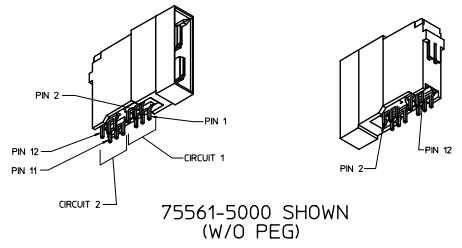
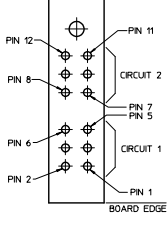
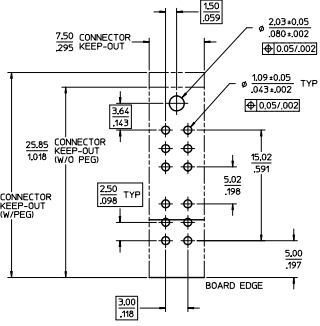
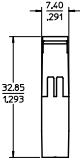
[Molex Connector Corporation](#)
[0755611500](#)

For any questions, you can email us directly:

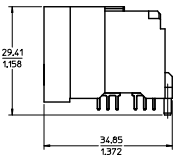
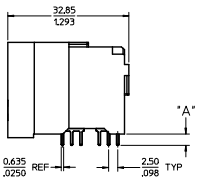
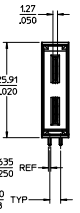
sales@integrated-circuit.com

PART NUMBER	DESCRIPTION	DIM "A" PC TAIL LENGTH	PLATING
75561-5000	SHORT PC TAIL - NO PEG	3.07/.121	30μ INCH MIN SELECT HARD GOLD IN CONTACT AREA WITH 100μ INCH MIN SELECT TIN IN TAIL AREA OVER 50μ INCH MIN NICKEL OVERALL
75561-5001	LONG PC TAIL - NO PEG	3.81/.150	
75561-1500	SHORT PC TAIL - PEG	3.07/.121	30μ INCH MIN SELECT HARD GOLD IN CONTACT AREA WITH 100μ INCH MIN SELECT TIN IN TAIL AREA OVER 50μ INCH MIN NICKEL OVERALL
75561-1501	LONG PC TAIL - PEG	3.81/.150	

- NOTES:
- MATERIALS:
- HOUSING: 30% GLASS FILLED, LCP 94V-0, COLOR: BLACK
- TERMINALS: COPPER ALLOY
- PLATING: PER ES-88 - SEE CHART
 - SEE CHART FOR REFERENCE DOCUMENTS
 - PLUG MATES WITH RECEPTACLE ASSEMBLIES: 75545-5000 & 75545-5001
 - MODULE IS DESIGNED FOR SOLDERING TO THE PCB
 - MODULE ASSEMBLY IS RoHS COMPLIANT
 - GATHERABILITY: +0.65/.026 X-DIRECTION
+1.30/.051 Y-DIRECTION

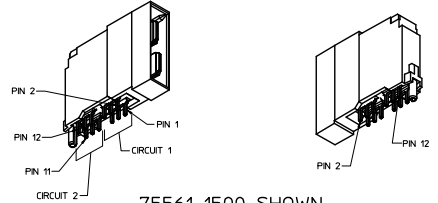


75561-5000 SHOWN (W/O PEG)



PCB LAYOUT SCALE: 4:1

PINOUT DETAIL SCALE: 4:1



75561-1500 SHOWN (W/PEG)

75561-500* SHOWN (W/O PEG)

SAME AS 75561-500* EXCEPT AS SHOWN

REFERENCE DOCUMENTS	
PS-75431-999	PRODUCT SPECIFICATION: PERFORMANCE AND RATINGS
SD-75555-***	FINAL ASSEMBLY CONFIGURATION DRAWING

QUALITY SYMBOLS	GENERAL TOLERANCES (UNLESS SPECIFIED)	DIMENSION STYLE		SCALE	DESIGN UNITS	THIRD ANGLE PROJECTION
		MM	INCH			
∇-0	4 PLACES ±.000	mm	INCH	2:1	METRIC	⊕
∇-0	3 PLACES ±.008					
∇-0	2 PLACES ±0.20					
∇-0	1 PLACE ±0.33					
∇-0	ANGULAR ±1/2°					

CONTRACT MGR. MARGARET GIBSON	DATE: 2010/01/08	DRAWN BY: ADRIAN MOL	DATE: 2005/04/19	TITLE: POWERMASS 80 AMP MODULE, PLUG
EC NO. UEP2005-2716	DRW. NO. 205/01/08	CHECKED BY: MDATA	DATE: 2005/04/19	
APPROVAL: A7	CHK. NO. 205/01/08	APPROVED BY: APATEL	DATE: 2010/10/18	

DRAFT WHERE APPLICABLE MUST REMAIN WITHIN DIMENSIONS	MATERIAL NO. SEE CHART	DOCUMENT NO. SD-75561-100	SHEET NO. 1 OF 1
THIS DRAWING CONTAINS INFORMATION THAT IS PROPRIETARY TO MOLEX INCORPORATED AND SHOULD NOT BE USED WITHOUT WRITTEN PERMISSION			

Rev. E 3/06/04/05