

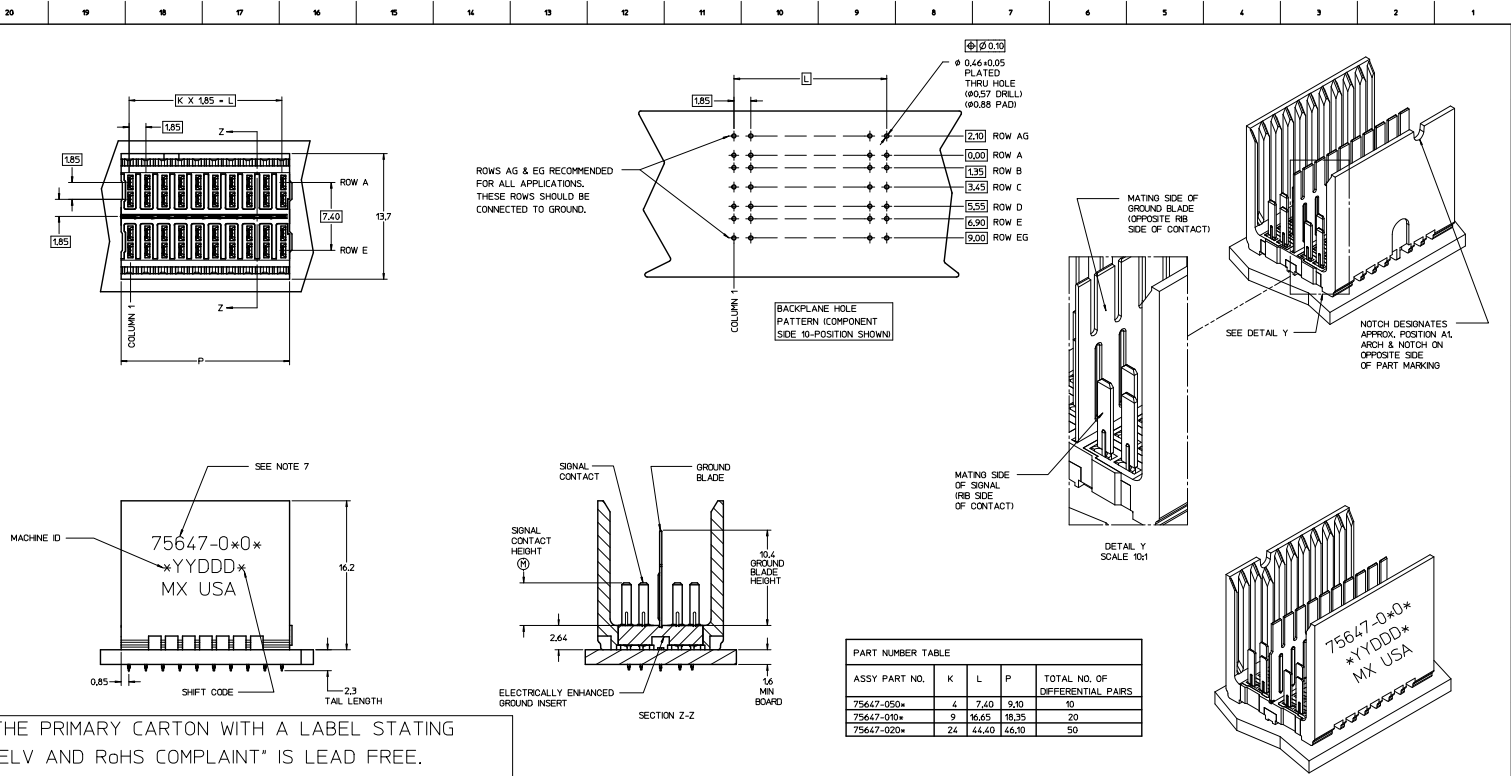
Excellent Integrated System Limited

Stocking Distributor

Click to view price, real time Inventory, Delivery & Lifecycle Information:

[Molex Connector Corporation](#)
[0756470204](#)

For any questions, you can email us directly:
sales@integrated-circuit.com



THE PRIMARY CARTON WITH A LABEL STATING "ELV AND RoHS COMPLIANT" IS LEAD FREE. CARTONS WITHOUT THIS LABEL MAY CONTAIN LEAD.

- NOTES:**
1. MATERIAL: HOUSING - LIQUID CRYSTAL POLYMER (LCP) GLASS-FILLED. UL 94V-0, COLOR - GRAY, ELECTRICALLY ENHANCED GROUND INSERT: CONDUCTIVE RESIN, COLOR - RED, SIGNAL CONTACT AND GROUND BLADE - HIGH PERFORMANCE COPPER ALLOY.
 2. FINISHES: SELECTIVE GOLD (Au) ON CONTACT AREA, SELECTIVE MATTE TIN (Sn) ON PCB TAILS, NICKEL (Ni) OVERALL.
 3. THIS PART CONFORMS TO MOLEX PRODUCT SPECIFICATION PS-75221-999.
 4. FOR MIXED CONTACT MATING LENGTHS CONSULT MOLEX FOR AVAILABILITY. CONTACT PAIRS MUST BE THE SAME LENGTH.
 5. FOR SPECIFIC PART NUMBER AND MATING INFORMATION PLEASE REFER TO CHART.
 6. PACKAGE PER PK-70873-5058.
 7. MARK PART NUMBER AND DATE CODE APPROXIMATELY WHERE SHOWN.
 8. THIS PART CONFORMS TO MOLEX COSMETIC SPECIFICATION PS-45499-002 CLASS B.
 9. MAPS (MOLEX ADVANCED PLATING SYSTEM).

COLUMN	PIN LENGTH DIM "M"	GOLD (Au) THICKNESS micrometers
01 - 10 COL	0-3.55 mm	0.25 (MAPS)
02 - 25 COL	1-4.55 mm	0.76
05 - 5 COL	2-5.55 mm	1.27
	3-3.55 mm	
	4-4.55 mm	
	5-5.55 mm	
	7-3.55 mm	
	8-4.55 mm	
	9-5.55 mm	

PART NUMBER TABLE

ASSY PART NO.	K	L	P	TOTAL NO. OF DIFFERENTIAL PAIRS
75647-050*	4	7,40	3,10	10
75647-010*	9	16,65	18,35	20
75647-020*	24	44,40	46,10	50

LEAD-FREE PLATING

REV TO LEAD-FREE EC NO. LCP2013-0000 DRAWINGS: 2012/09/05 CHECKED: 2012/09/05 APPROVED: 2012/07/05 DATE:	QUALITY SYMBOLS ∇=0 ∇=0 ∇=0	GENERAL TOLERANCES (UNLESS SPECIFIED) 4 PLACES ±0.25 3 PLACES ±0.25 2 PLACES ±0.38 1 PLACE ±0.38	DIMENSION STYLE MM ONLY	SCALE 5:1	DESIGN UNITS METRIC	THIRD ANGLE PROJECTION	
	DRAFT WHERE APPLICABLE MUST REMAIN WITHIN DIMENSIONS	ANGULAR ±1/2°	PATENT NO. SEE CHART	DRAWN BY J B INGHAM	DATE 2006/01/18	TITLE GBX 2-PAIR BACKPLANE LF ELECTRICALLY ENHANCED OPEN END SALES ASSEMBLY	DATE 2006/01/18
	APPROVED BY SMILLER	DATE 2012/12/05	MOLEX	DOCUMENT NO. SD-75647-010	SHEET NO. 1 OF 1	THIS DRAWING CONTAINS INFORMATION THAT IS PROPRIETARY TO MOLEX INCORPORATED AND SHOULD NOT BE USED WITHOUT WRITTEN PERMISSION	