

Excellent Integrated System Limited

Stocking Distributor

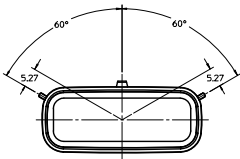
Click to view price, real time Inventory, Delivery & Lifecycle Information:

[Molex Connector Corporation](#)
[0757575301](#)

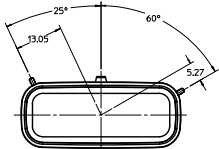
For any questions, you can email us directly:
sales@integrated-circuit.com

CUSTOMER SHROUD DESIGN DETAILS

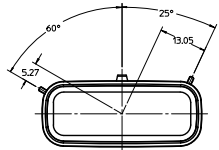
- NOTES:**
1. REFER TO MOLEX SALES DRAWING SD-75757-002 FOR THE HEADER ASSEMBLY PRODUCT DETAILS AND RECOMMENDED PCB LAYOUT.
 2. KEYING OPTIONS A-D AND SUGGESTED COLORS COMPLY TO THE POLARIZATION STANDARDS ESTABLISHED FOR MATING WITH A MX150 FEMALE CONNECTOR.
 3. INTERIOR SHROUD SURFACE MUST BE FREE OF DEFECTS AND PARTING LINES ALL AROUND TO ENSURE PROPER SEALING OF THE MATING MX150 FEMALE CONNECTOR.
 4. A FULL SHROUD ON THE MATING CONNECTOR IS REQUIRED TO INSURE THE HEADER SHROUD POLARIZATION FEATURES OPTIONS A-D WILL FUNCTION PROPERLY. THE FULL SHROUD ALSO PREVENTS SCOOP DAMAGE TO THE HEADER CONTACTS.
 5. PERMISSIBLE DRAFT ANGLE 0.25° MAXIMUM.
 6. RADI ON ALL CORNERS SHOWN SHARP OR ALL UNSPECIFIED RADI 0.25 EXCEPT AS NOTED.
 7. DIMENSIONS SHOWN ABOUT A CENTERLINE ARE SYMMETRICAL ABOUT THAT CENTERLINE WITHIN HALF THE SPECIFIED TOLERANCE.



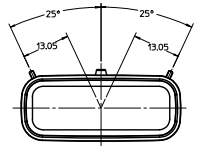
KEYING OPTION 'A'
SUGGESTED COLOR: BLACK



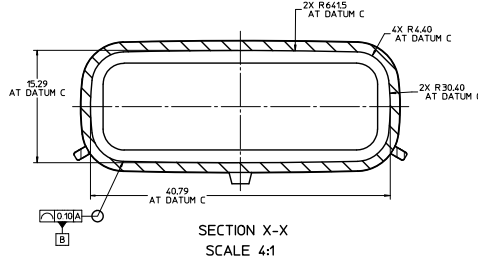
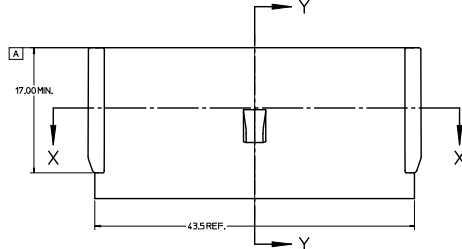
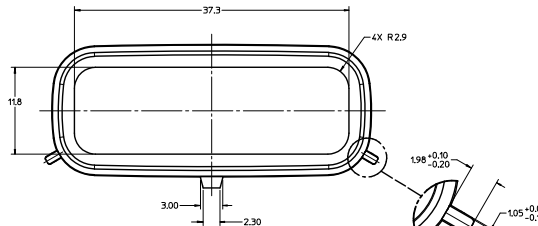
KEYING OPTION 'B'
SUGGESTED COLOR: GREY



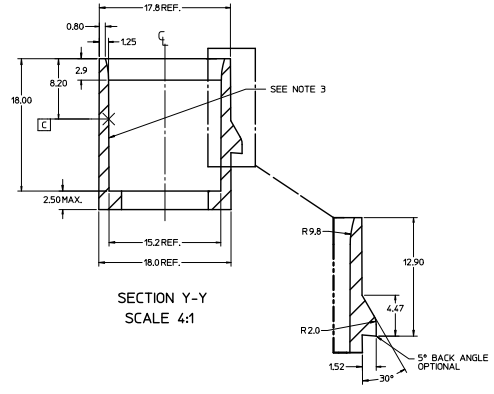
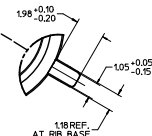
KEYING OPTION 'C'
SUGGESTED COLOR: BROWN



KEYING OPTION 'D'
SUGGESTED COLOR: GREEN

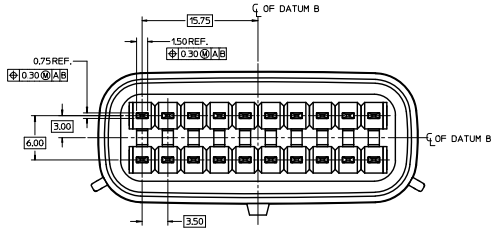


SECTION X-X
SCALE 4:1

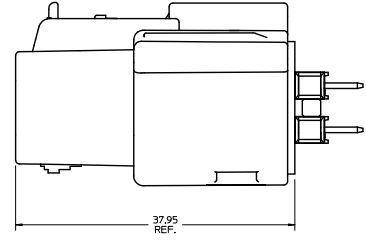


SECTION Y-Y
SCALE 4:1

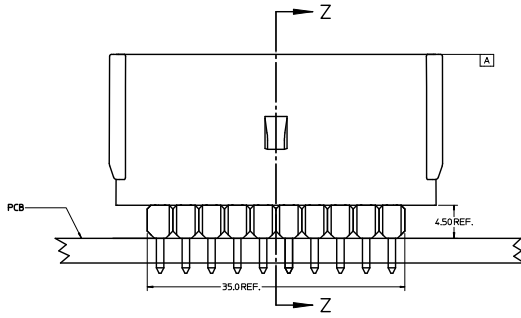
| | | | | | | |
|--|---|--|--|--------------|------------------------|------------------------|
| ADDED PLUS ASSY ECN: 147201-2480 DRAWN: ROSA 2011/03/04 CHECK: JAPPE 2011/03/07 APPROVED: [Signature] | QUALITY SYMBOLS 4 PLACES ±0 3 PLACES ±0.10 2 PLACES ±0.2 1 PLACE ±0.2 ANGULAR ±1/2° | GENERAL TOLERANCES (UNLESS SPECIFIED) mm INCH ±0.10 ±0.004 ±0.2 ±0.008 ±0.2 ±0.008 | DIMENSION STYLE MM ONLY DRAWN BY: TMCLELL DATE: 02/16/06 CHECKED BY: TMCLELL DATE: 02/16/06 APPROVED BY: BANAKIS DATE: 02/16/06 | SCALE 2:1 | DESIGN UNITS METRIC | THIRD ANGLE PROJECTION |
| | APPLICATION SPEC 2X10 MX150 HEADER SHROUD DETAILS | | | | | |
| | MOLEX INCORPORATED 75757-2100 AS-75757-210 | | | | | |
| | THIS DRAWING CONTAINS INFORMATION THAT IS PROPRIETARY TO MOLEX INCORPORATED AND SHOULD NOT BE USED WITHOUT WRITTEN PERMISSION | | | | | |



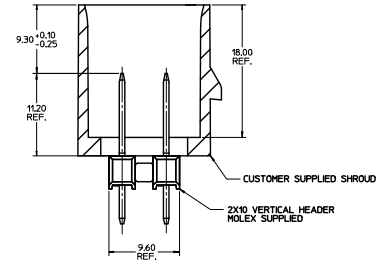
NOTES:
1. ADHERENCE TO THE HEADER APPLICATION DETAILS IS IMPERATIVE TO ENSURE PROPER SHROUD SEALING AND CONTACT ALIGNMENT WHEN MATED WITH A MX150 FEMALE CONNECTOR.



CONNECTOR ASSEMBLY

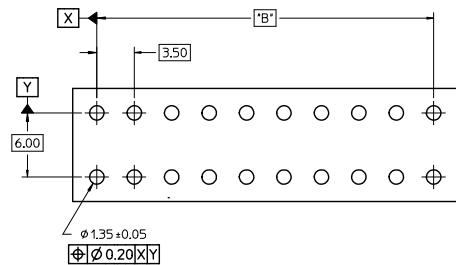
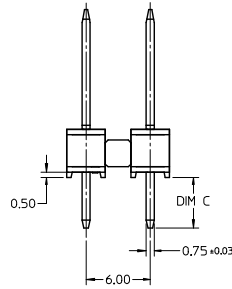
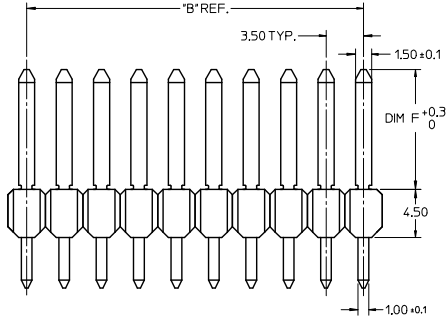
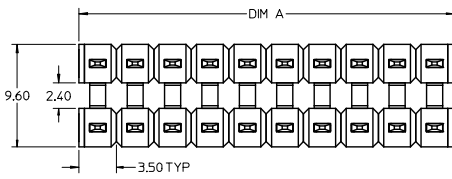


HEADER APPLICATION DETAILS



SECTION Z-Z

| | | | | | | | |
|---|--|--|--|---------|--------------|------------------------|---|
| SEE SHEET 1 EC NO. 075757-2680 D DRAWING/ISSUE 2011/03/04 CHKD: [blank] APPR: [blank] REV: [blank] | QUALITY SYMBOLS | GENERAL TOLERANCES (UNLESS SPECIFIED) | DIMENSION STYLE | SCALE | DESIGN UNITS | THIRD ANGLE PROJECTION | |
| | 4 PLACES $\nabla=0$ 3 PLACES $\nabla=0$ 2 PLACES $\nabla=0$ 1 PLACE $\nabla=0$ ANGULAR $\pm 1/2^\circ$ | mm INCH +--- +--- +--- +--- +0.10 +--- +--- +--- | DRAWN BY DATE TMCLELL 02/16/06 CHECKED BY DATE TMCLELL 02/16/06 APPROVED BY DATE BANAKIS 02/16/06 | MM ONLY | 4:1 | METRIC | APPLICATION SPEC 2X10 MX150 HEADER SHROUD DETAILS |
| | DRAFT WHERE APPLICABLE MUST REMAIN WITHIN DIMENSIONS | MATERIAL NO. 75757-2100 | DOCUMENT NO. AS-75757-210 | | | | MOLEX INCORPORATED 2 OF 2 |
| | | THIS DRAWING CONTAINS INFORMATION THAT IS PROPRIETARY TO MOLEX INCORPORATED AND SHOULD NOT BE USED WITHOUT WRITTEN PERMISSION | | | | | |



RECOMMENDED PCB LAYOUT

NOTES:

1. TERMINAL MAT'L: ALLOY C26000, CARTRIDGE BRASS
2. WAFER MAT'L: 30% GLASS FILLED LCP, 94V-0, COLOR BLACK.
3. TERMINAL PLATING:
 OPTION 4 - 15 μ m MIN MATTE TIN OVERALL OVER 1.25 μ m NICKEL OVERALL
 OPTION 1 - 2.5 μ m MIN MATTE TIN OVERALL OVER 1.25 μ m NICKEL OVERALL
 OPTION 2 - 1.25 μ m NICKEL OVERALL 2.5 μ m MIN SELECT MATTE TIN PC TAIL
 AREA 0.05-0.25 μ m SELECT GOLD CONTACT AREA
 OPTION 3 - 1.25 μ m NICKEL OVERALL 2.5 μ m MIN SELECT MATTE TIN PC TAIL
 AREA 0.75 μ m SELECT GOLD CONTACT AREA
4. HEADER ASSEMBLIES ARE TUBE PACKAGED PER PK-36518-340.

| | | | | | | | | | |
|--|--------------------------------------|--|-------------|--|-----------------|---|------------------------|------------------------|--|
| PK SPEC UPDATED EC NO: I2016-0115 TIT: DPMNBR02 CHKD: APPR: KPRASLD 2016/05/16 2016/06/03 | QUALITY SYMBOLS ▽=0 ▽=0 ▽=0 | GENERAL TOLERANCES (UNLESS SPECIFIED) mm INCH | | DIMENSION STYLE MM ONLY | | SCALE 4:1 | DESIGN UNITS METRIC | THIRD ANGLE PROJECTION | |
| | | 4 PLACES ± --- ± --- | ± --- ± --- | DRAWN BY TMCLELL | DATE 1/18/05 | TITLE MX150 DUAL ROW UNSHROUDED VERTICAL HEADER ASSEMBLY | | | |
| | | 3 PLACES ± --- ± --- | ± --- ± --- | CHECKED BY TMCLELL | DATE 1/18/05 | molex | | | |
| | | 2 PLACES ± 0.13 ± --- | ± --- ± --- | APPROVED BY BANAK IS | DATE 1/18/05 | MATERIAL NO. SEE CHART DOCUMENT NO. SD-75757-002 SHEET NO. 1 OF 2 | | | |
| 1 PLACE ± 0.25 ± --- | ± --- ± --- | ANGULAR ± 1/2° | | DRAFT WHERE APPLICABLE MUST REMAIN WITHIN DIMENSIONS | | THIS DRAWING CONTAINS INFORMATION THAT IS PROPRIETARY TO MOLEX INCORPORATED AND SHOULD NOT BE USED WITHOUT WRITTEN PERMISSION | | | |

| | 13 | 12 | 11 | 10 | 9 | 8 | 7 | 6 | 5 | 4 | 3 | 2 | 1 | | | | | |
|---|----------|----------------|-----------------|---------|---------|-----------------|------------|---------|-----------------|---------|------------|-----------------|---------|---------|---------|---------|-------|-----|
| J | 2 x 2 | 1 | 75757-6121 | 3.05 | 27.77 | 1 | 75757-5121 | 3.05 | 16.09 | 1 | 75757-1121 | 3.05 | 11.20 | 4.75 | 11.20 | 7.0 | 3.50 | REF |
| | | 2 | 75757-6221 | | | 2 | 75757-5221 | | | 2 | 75757-1221 | | | | | | | |
| | | 3 | 75757-6321 | | | 3 | 75757-5321 | | | 3 | 75757-1321 | | | | | | | |
| | | 4 | 75757-6421 | | | 4 | 75757-5421 | | | 4 | 75757-1421 | | | | | | | |
| I | 2 x 3 | 1 | 75757-6131 | 3.05 | 27.77 | 1 | 75757-5131 | 3.05 | 16.09 | 1 | 75757-1131 | 3.05 | 11.20 | 4.75 | 11.20 | 10.5 | 7.00 | |
| | | 2 | 75757-6231 | | | 2 | 75757-5231 | | | 2 | 75757-1231 | | | | | | | |
| | | 3 | 75757-6331 | | | 3 | 75757-5331 | | | 3 | 75757-1331 | | | | | | | |
| | | 4 | 75757-6431 | | | 4 | 75757-5431 | | | 4 | 75757-1431 | | | | | | | |
| H | 2 x 4 | 1 | 75757-6141 | 3.05 | 27.77 | 1 | 75757-5141 | 3.05 | 16.09 | 1 | 75757-1141 | 3.05 | 11.20 | 4.75 | 11.20 | 14.0 | 10.50 | |
| | | 2 | 75757-6241 | | | 2 | 75757-5241 | | | 2 | 75757-1241 | | | | | | | |
| | | 3 | 75757-6341 | | | 3 | 75757-5341 | | | 3 | 75757-1341 | | | | | | | |
| | | 4 | 75757-6441 | | | 4 | 75757-5441 | | | 4 | 75757-1441 | | | | | | | |
| G | 2 x 6 | 1 | 75757-6161 | 3.05 | 27.77 | 1 | 75757-5161 | 3.05 | 16.09 | 1 | 75757-1161 | 3.05 | 11.20 | 4.75 | 11.20 | 21.0 | 17.50 | |
| | | 2 | 75757-6261 | | | 2 | 75757-5261 | | | 2 | 75757-1261 | | | | | | | |
| | | 3 | 75757-6361 | | | 3 | 75757-5361 | | | 3 | 75757-1361 | | | | | | | |
| | | 4 | 75757-6461 | | | 4 | 75757-5461 | | | 4 | 75757-1461 | | | | | | | |
| F | 2 x 8 | 1 | 75757-6181 | 3.05 | 27.77 | 1 | 75757-5181 | 3.05 | 16.09 | 1 | 75757-1181 | 3.05 | 11.20 | 4.75 | 11.20 | 28.0 | 24.50 | |
| | | 2 | 75757-6281 | | | 2 | 75757-5281 | | | 2 | 75757-1281 | | | | | | | |
| | | 3 | 75757-6381 | | | 3 | 75757-5381 | | | 3 | 75757-1381 | | | | | | | |
| | | 4 | 75757-6481 | | | 4 | 75757-5481 | | | 4 | 75757-1481 | | | | | | | |
| E | 2 x 10 | 1 | 75757-6101 | 3.05 | 27.77 | 1 | 75757-5101 | 3.05 | 16.09 | 1 | 75757-1101 | 3.05 | 11.20 | 4.75 | 11.20 | 35.0 | 31.50 | |
| | | 2 | 75757-6201 | | | 2 | 75757-5201 | | | 2 | 75757-1201 | | | | | | | |
| | | 3 | 75757-6301 | | | 3 | 75757-5301 | | | 3 | 75757-1301 | | | | | | | |
| | | 4 | 75757-6401 | | | 4 | 75757-5401 | | | 4 | 75757-1401 | | | | | | | |
| | CKT SIZE | PLATING OPTION | MATERIAL NUMBER | *C* DIM | *F* DIM | MATERIAL NUMBER | *C* DIM | *F* DIM | MATERIAL NUMBER | *C* DIM | *F* DIM | MATERIAL NUMBER | *C* DIM | *F* DIM | *A* DIM | *B* DIM | | |

| <p>SEE SHEET 1 EC NO: 2016-0115 DRAWN: BBR02 CHKD: APPR: KRASAD 2016/05/16 2016/06/03</p> | | | | | | | | | | | | | <p>QUALITY SYMBOLS</p> <p>▽=0</p> <p>▽=0</p> <p>▽=0</p> | | <p>GENERAL TOLERANCES (UNLESS SPECIFIED)</p> <table border="1"> <tr> <th></th> <th>mm</th> <th>INCH</th> </tr> <tr> <td>4 PLACES</td> <td>±---</td> <td>±---</td> </tr> <tr> <td>3 PLACES</td> <td>±---</td> <td>±---</td> </tr> <tr> <td>2 PLACES</td> <td>±0.13</td> <td>±---</td> </tr> <tr> <td>1 PLACE</td> <td>±0.25</td> <td>±---</td> </tr> <tr> <td>0 PLACE</td> <td>±</td> <td>±</td> </tr> </table> | | | mm | INCH | 4 PLACES | ±--- | ±--- | 3 PLACES | ±--- | ±--- | 2 PLACES | ±0.13 | ±--- | 1 PLACE | ±0.25 | ±--- | 0 PLACE | ± | ± | <p>DIMENSION STYLE: MM ONLY</p> <p>SCALE: 1:1</p> <p>DESIGN UNITS: METRIC</p> <p>THIRD ANGLE PROJECTION</p> | | <p>DRAWN BY: IMC LLELL DATE: 1/18/05</p> <p>CHECKED BY: IMC LLELL DATE: 1/18/05</p> <p>APPROVED BY: BANAKI S DATE: 1/18/05</p> | | <p>TITLE: MX150 DUAL ROW UNSHROUDED VERTICAL HEADER ASSEMBLY</p> <p>molex</p> | | <p>MATERIAL NO. SEE CHART</p> <p>DOCUMENT NO. SD-75757-002</p> | | <p>SHEET NO. 2 OF 2</p> | |
|---|-------|------|--|--|--|--|--|--|--|--|--|--|--|--|--|--|--|----|------|----------|------|------|----------|------|------|----------|-------|------|---------|-------|------|---------|---|---|---|--|--|--|--|--|--|--|-------------------------|--|
| | mm | INCH | | | | | | | | | | | | | | | | | | | | | | | | | | | | | | | | | | | | | | | | | | |
| 4 PLACES | ±--- | ±--- | | | | | | | | | | | | | | | | | | | | | | | | | | | | | | | | | | | | | | | | | | |
| 3 PLACES | ±--- | ±--- | | | | | | | | | | | | | | | | | | | | | | | | | | | | | | | | | | | | | | | | | | |
| 2 PLACES | ±0.13 | ±--- | | | | | | | | | | | | | | | | | | | | | | | | | | | | | | | | | | | | | | | | | | |
| 1 PLACE | ±0.25 | ±--- | | | | | | | | | | | | | | | | | | | | | | | | | | | | | | | | | | | | | | | | | | |
| 0 PLACE | ± | ± | | | | | | | | | | | | | | | | | | | | | | | | | | | | | | | | | | | | | | | | | | |
| <p>DRAFT WHERE APPLICABLE MUST REMAIN WITHIN DIMENSIONS</p> | | | | | | | | | | | | | <p>THIS DRAWING CONTAINS INFORMATION THAT IS PROPRIETARY TO MOLEX INCORPORATED AND SHOULD NOT BE USED WITHOUT WRITTEN PERMISSION</p> | | | | | | | | | | | | | | | | | | | | | | | | | | | | | | | |