

Excellent Integrated System Limited

Stocking Distributor

Click to view price, real time Inventory, Delivery & Lifecycle Information:

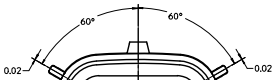
[Molex Connector Corporation](#)
[0757576441](#)

For any questions, you can email us directly:
sales@integrated-circuit.com

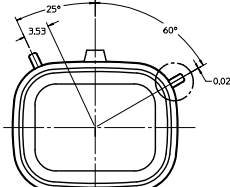
CUSTOMER SHROUD DESIGN DETAILS

NOTES:

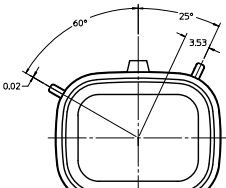
1. REFER TO MOLEX SALES DRAWING SD-75757-002 FOR THE HEADER ASSEMBLY PRODUCT DETAILS AND RECOMMENDED PCB LAYOUT.
2. KEYING OPTIONS A-D AND SUGGESTED COLORS COMPLY TO THE POLARIZATION STANDARDS ESTABLISHED FOR MATING WITH A MX150 FEMALE CONNECTOR.
3. INTERIOR SHROUD SURFACE MUST BE FREE OF DEFECTS AND PARTING LINES ALL AROUND TO ENSURE PROPER SEALING OF THE MATING MX150 FEMALE CONNECTOR.
4. A FULL SHROUD ON THE MATING CONNECTOR IS REQUIRED TO INSURE THE HEADER SHROUD POLARIZATION FEATURES (OPTIONS A-D) WILL FUNCTION PROPERLY. THE FULL SHROUD ALSO PREVENTS SCOOP DAMAGE TO THE HEADER CONTACTS.
5. PERMISSIBLE DRAFT ANGLE 0.25° MAXIMUM.
6. RADI ON ALL CORNERS SHOWN SHARP OR ALL UNSPECIFIED RADI 0.25 EXCEPT AS NOTED.
7. DIMENSIONS SHOWN ABOUT A CENTERLINE ARE SYMMETRICAL ABOUT THAT CENTERLINE WITHIN HALF THE SPECIFIED TOLERANCE.



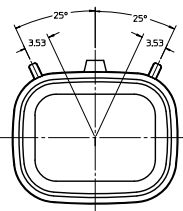
KEYING OPTION "A"
SUGGESTED COLOR: BLACK



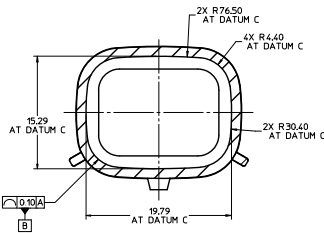
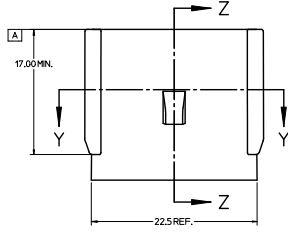
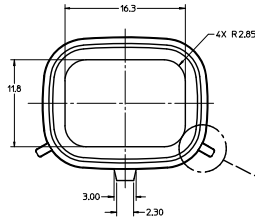
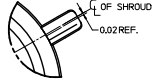
KEYING OPTION "B"
SUGGESTED COLOR: GREY



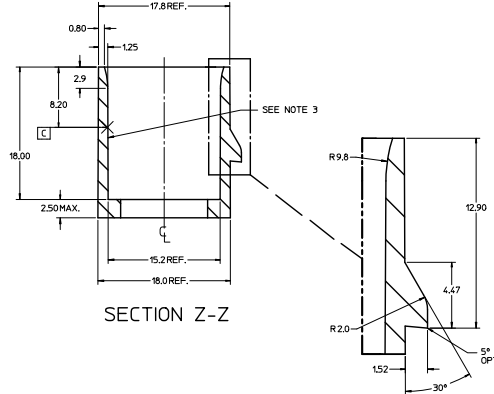
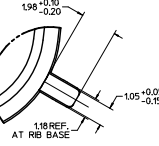
KEYING OPTION "C"
SUGGESTED COLOR: BROWN



KEYING OPTION "D"
SUGGESTED COLOR: GREEN

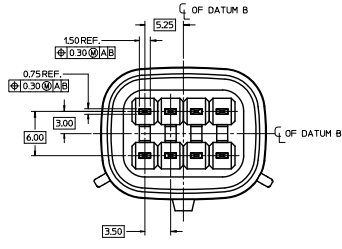


SECTION Y-Y

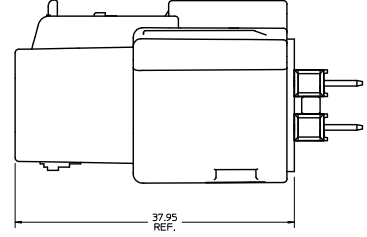


SECTION Z-Z

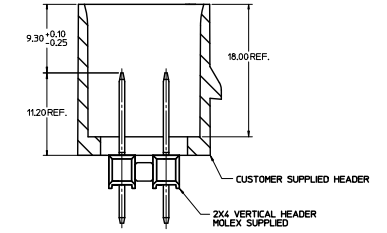
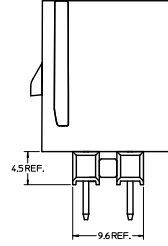
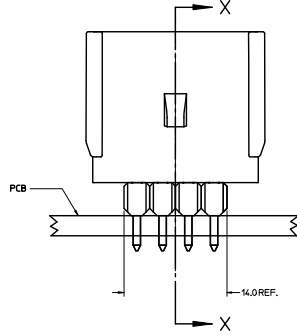
DRAWN BY: TMCLELL CHECKED BY: TMCLELL APPROVED BY: BANAKI S DATE: 2006/04/12 DATE: 2006/04/12 DATE: 2006/04/13	QUALITY SYMBOLS 4 PLACES ±0.01 3 PLACES ±0.01 2 PLACES ±0.01 1 PLACE ±0.2 ANGULAR ±1/2°	GENERAL TOLERANCES (UNLESS SPECIFIED) mm INCH ±0.15 ±0.006 ±0.25 ±0.010 ±0.50 ±0.020 ±1.00 ±0.040 ±1.50 ±0.060 ±2.00 ±0.080	DIMENSION STYLE MM ONLY DRAWN BY: TMCLELL CHECKED BY: TMCLELL APPROVED BY: BANAKI S DATE: 2006/04/12 DATE: 2006/04/12 DATE: 2006/04/13	SCALE 4:1	DESIGN UNITS METRIC	THIRD ANGLE PROJECTION
	APPLICATION SPEC 2X4 MX150 HEADER SHROUD DETAILS					
	MOLEX INCORPORATED					
	MATERIAL NO: 75757-2040 DOCUMENT NO: AS-75757-204 SHEET NO: 1 OF 2					



NOTES:
1. ADHERENCE TO THE HEADER APPLICATION DETAILS IS IMPERATIVE TO ENSURE PROPER SHROUD SEALING AND CONTACT ALIGNMENT WHEN MATED WITH A MX150 FEMALE CONNECTOR.



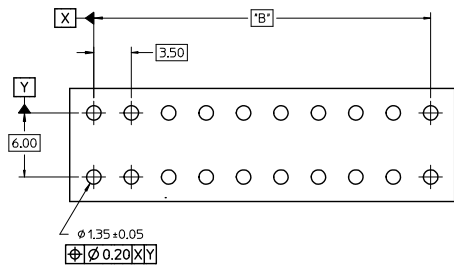
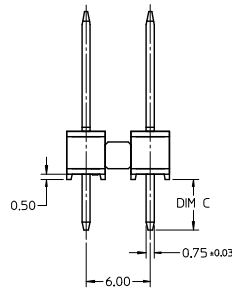
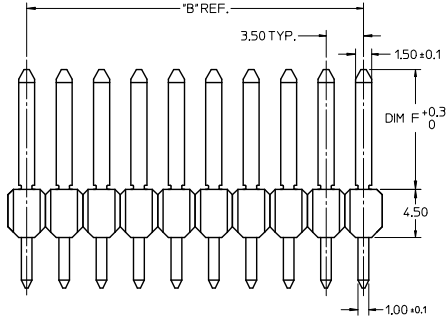
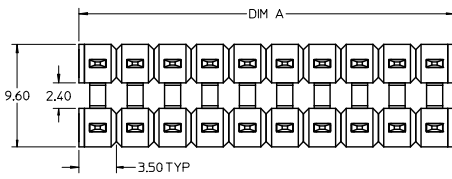
CONNECTOR ASSEMBLY



SECTION X-X

HEADER APPLICATION DETAILS

SEE SHEET 1 EC NO. 075757-2680 DRAWN BY: DRW:BARBUCA 2011/03/04 CHKD: CHK:LOMBARDI 2011/03/07 APPR:LOMBARDI 2011/03/07 REV:	QUALITY SYMBOLS	GENERAL TOLERANCES (UNLESS SPECIFIED)	DIMENSION STYLE	SCALE	DESIGN UNITS	THIRD ANGLE PROJECTION	
	4 PLACES $\nabla=0$ 3 PLACES $\nabla=0$ 2 PLACES $\nabla=0$ 1 PLACE $\nabla=0$	mm INCH ±--- ±--- ±0.01 ±--- ±0.2 ±--- ANGULAR ±1/2°	MM ONLY DRAWN BY: TMCLELL DATE: 2006/04/12 CHECKED BY: DATE: APPROVED BY: DATE: 2006/04/13 MATERIAL NO: 75757-2040 DOCUMENT NO: AS-75757-204	4:1	METRIC	APPLICATION SPEC 2X4 MX150 HEADER SHROUD DETAILS	
	MOLEX INCORPORATED						SHEET NO. 2 OF 2
	DRAFT WHERE APPLICABLE MUST REMAIN WITHIN DIMENSIONS						THIS DRAWING CONTAINS INFORMATION THAT IS PROPRIETARY TO MOLEX INCORPORATED AND SHOULD NOT BE USED WITHOUT WRITTEN PERMISSION



RECOMMENDED PCB LAYOUT

NOTES:

1. TERMINAL MAT'L: ALLOY C26000, CARTRIDGE BRASS
2. WAFER MAT'L: 30% GLASS FILLED LCP, 94V-0, COLOR BLACK.
3. TERMINAL PLATING:
 OPTION 4 - 15 μ m MIN MATTE TIN OVERALL OVER 1.25 μ m NICKEL OVERALL
 OPTION 1 - 2.5 μ m MIN MATTE TIN OVERALL OVER 1.25 μ m NICKEL OVERALL
 OPTION 2 - 1.25 μ m NICKEL OVERALL 2.5 μ m MIN SELECT MATTE TIN PC TAIL
 AREA 0.05-0.25 μ m SELECT GOLD CONTACT AREA
 OPTION 3 - 1.25 μ m NICKEL OVERALL 2.5 μ m MIN SELECT MATTE TIN PC TAIL
 AREA 0.75 μ m SELECT GOLD CONTACT AREA
4. HEADER ASSEMBLIES ARE TUBE PACKAGED PER PK-36518-340.

PK SPEC UPDATED EC NO: I2016-0115 T1 DRAFTER: CHIKO APPR: KAPASUD 2016/05/16 2016/06/03 DESCRIPTION:	QUALITY SYMBOLS	GENERAL TOLERANCES (UNLESS SPECIFIED)	DIMENSION STYLE	SCALE	DESIGN UNITS	THIRD ANGLE PROJECTION	
	∇=0 ∇=0 ∇=0	mm INCH 4 PLACES ± --- ± --- 3 PLACES ± --- ± --- 2 PLACES ± 0.13 ± --- 1 PLACE ± 0.25 ± --- 0 PLACE ± ±	MM ONLY	4:1	METRIC	DRAWN BY: TMCLELL DATE: 1/18/05 CHECKED BY: TMCLELL DATE: 1/18/05 APPROVED BY: BANAKIS DATE: 1/18/05	
	ANGULAR ± 1/2° DRAFT WHERE APPLICABLE MUST REMAIN WITHIN DIMENSIONS	MATERIAL NO.	SEE CHART	DOCUMENT NO.	TITLE: MX150 DUAL ROW UNSHROUDED VERTICAL HEADER ASSEMBLY molex		SHEET NO. 1 OF 2
	SIZE: A2 THIS DRAWING CONTAINS INFORMATION THAT IS PROPRIETARY TO MOLEX INCORPORATED AND SHOULD NOT BE USED WITHOUT WRITTEN PERMISSION	SD-75757-002					

	13	12	11	10	9	8	7	6	5	4	3	2	1					
J	2 x 2	1	75757-6121	3.05	27.77	1	75757-5121	3.05	16.09	1	75757-1121	3.05	11.20	4.75	11.20	7.0	3.50	REF
		2	75757-6221			2	75757-5221			2	75757-1221							
		3	75757-6321			3	75757-5321			3	75757-1321							
		4	75757-6421			4	75757-5421			4	75757-1421							
I	2 x 3	1	75757-6131	3.05	27.77	1	75757-5131	3.05	16.09	1	75757-1131	3.05	11.20	4.75	11.20	10.5	7.00	
		2	75757-6231			2	75757-5231			2	75757-1231							
		3	75757-6331			3	75757-5331			3	75757-1331							
		4	75757-6431			4	75757-5431			4	75757-1431							
H	2 x 4	1	75757-6141	3.05	27.77	1	75757-5141	3.05	16.09	1	75757-1141	3.05	11.20	4.75	11.20	14.0	10.50	
		2	75757-6241			2	75757-5241			2	75757-1241							
		3	75757-6341			3	75757-5341			3	75757-1341							
		4	75757-6441			4	75757-5441			4	75757-1441							
G	2 x 6	1	75757-6161	3.05	27.77	1	75757-5161	3.05	16.09	1	75757-1161	3.05	11.20	4.75	11.20	21.0	17.50	
		2	75757-6261			2	75757-5261			2	75757-1261							
		3	75757-6361			3	75757-5361			3	75757-1361							
		4	75757-6461			4	75757-5461			4	75757-1461							
F	2 x 8	1	75757-6181	3.05	27.77	1	75757-5181	3.05	16.09	1	75757-1181	3.05	11.20	4.75	11.20	28.0	24.50	
		2	75757-6281			2	75757-5281			2	75757-1281							
		3	75757-6381			3	75757-5381			3	75757-1381							
		4	75757-6481			4	75757-5481			4	75757-1481							
E	2 x 10	1	75757-6101	3.05	27.77	1	75757-5101	3.05	16.09	1	75757-1101	3.05	11.20	4.75	11.20	35.0	31.50	
		2	75757-6201			2	75757-5201			2	75757-1201							
		3	75757-6301			3	75757-5301			3	75757-1301							
		4	75757-6401			4	75757-5401			4	75757-1401							
	CKT SIZE	PLATING OPTION	MATERIAL NUMBER	*C* DIM	*F* DIM	MATERIAL NUMBER	*C* DIM	*F* DIM	MATERIAL NUMBER	*C* DIM	*F* DIM	MATERIAL NUMBER	*C* DIM	*F* DIM	*A* DIM	*B* DIM		

<p>SEE SHEET 1 EC NO: 2016-0115 DRAWN: BBR02 CHKD: APPR: KRASAD 2016/05/16 2016/06/03</p>													<p>QUALITY SYMBOLS</p> <p>▽=0</p> <p>▽=0</p> <p>▽=0</p>	<p>GENERAL TOLERANCES (UNLESS SPECIFIED)</p> <table border="1"> <tr> <th></th> <th>mm</th> <th>INCH</th> </tr> <tr> <td>4 PLACES</td> <td>±---</td> <td>±---</td> </tr> <tr> <td>3 PLACES</td> <td>±---</td> <td>±---</td> </tr> <tr> <td>2 PLACES</td> <td>±0.13</td> <td>±---</td> </tr> <tr> <td>1 PLACE</td> <td>±0.25</td> <td>±---</td> </tr> <tr> <td>0 PLACE</td> <td>±</td> <td>±</td> </tr> </table> <p>ANGULAR ±1/2°</p> <p>DRAFT WHERE APPLICABLE MUST REMAIN WITHIN DIMENSIONS</p>		mm	INCH	4 PLACES	±---	±---	3 PLACES	±---	±---	2 PLACES	±0.13	±---	1 PLACE	±0.25	±---	0 PLACE	±	±	<p>DIMENSION STYLE: MM ONLY</p> <p>SCALE: 1:1</p> <p>DESIGN UNITS: METRIC</p> <p>THIRD ANGLE PROJECTION</p> <p>DRAWN BY: IMC LLELL DATE: 1/18/05</p> <p>CHECKED BY: IMC LLELL DATE: 1/18/05</p> <p>APPROVED BY: BANAKI S DATE: 1/18/05</p> <p>MATERIAL NO. SEE CHART</p> <p>DOCUMENT NO. SD-75757-002</p> <p>SHEET NO. 2 OF 2</p> <p>THIS DRAWING CONTAINS INFORMATION THAT IS PROPRIETARY TO MOLEX INCORPORATED AND SHOULD NOT BE USED WITHOUT WRITTEN PERMISSION</p>	<p>TITLE: MX150 DUAL ROW UNSHROUDED VERTICAL HEADER ASSEMBLY</p> <p>molex</p>
	mm	INCH																																
4 PLACES	±---	±---																																
3 PLACES	±---	±---																																
2 PLACES	±0.13	±---																																
1 PLACE	±0.25	±---																																
0 PLACE	±	±																																

	13	12	11	10	9	8	7	6	5	4	3	2	1
--	----	----	----	----	---	---	---	---	---	---	---	---	---