

Excellent Integrated System Limited

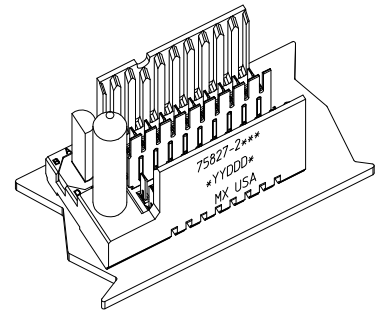
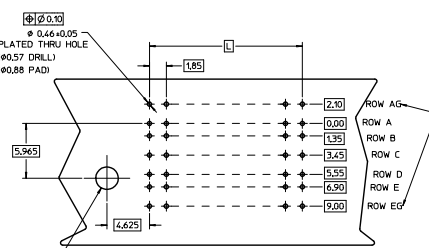
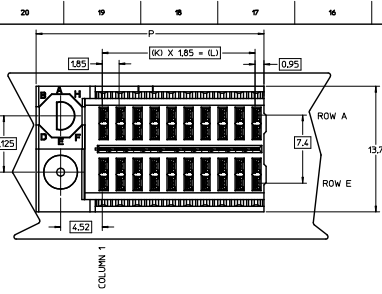
Stocking Distributor

Click to view price, real time Inventory, Delivery & Lifecycle Information:

[Molex Connector Corporation](#)
[0758272104](#)

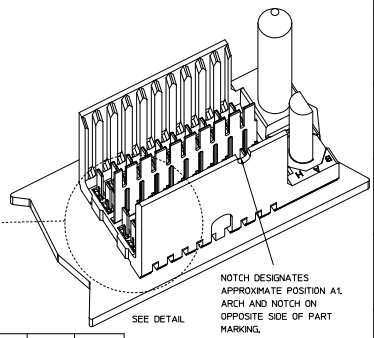
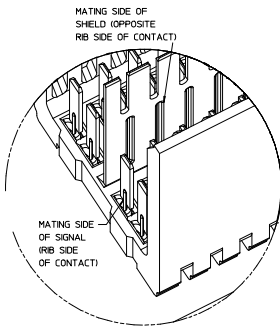
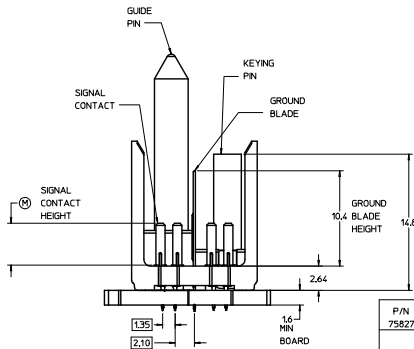
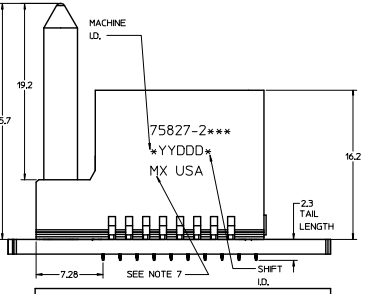
For any questions, you can email us directly:

sales@integrated-circuit.com



THE PRIMARY CARTON WITH A LABEL STATING "ELV AND RoHS COMPLIANT" IS LEAD FREE. CARTONS WITHOUT THIS LABEL MAY CONTAIN LEAD.

BACKPLANE HOLE PATTERN (COMPONENT SIDE-10 POS SHOWN)



PART NUMBER TABLE				
ASSY PART NO.	K	L	P	TOTAL NO. OF DIFFERENTIAL PAIRS
75827-21**	9	16.65	24.78	20
75827-22**	24	44.40	52.53	50

- NOTES:**
- MATERIAL: HOUSING - LIQUID CRYSTAL POLYMER (LCP) GLASS-FILLED, UL 94V-0. COLOR - GRAY. SIGNAL CONTACT AND GROUND BLADE - HIGH PERFORMANCE COPPER ALLOY.
 - FINISHES: SELECTIVE GOLD (Au) ON CONTACT AREA, SELECTIVE MATTE TIN (Sn) ON PCB TAILS, NICKEL (Ni) OVERALL.
 - THIS PART CONFORMS TO MOLEX PRODUCT SPECIFICATION PS-75221-999.
 - FOR MIXED CONTACT MATING LENGTHS CONSULT MOLEX FOR AVAILABILITY. CONTACT PAIRS MUST BE THE SAME LENGTH.
 - FOR SPECIFIC PART NUMBER AND MATING INFORMATION PLEASE REFER TO CHART.
 - PACKAGE PER PK-70873-5058.
 - EITHER MARK PART NUMBER AND DATE CODE APPROXIMATELY WHERE SHOWN OR PLACE A LABEL ON THE TUBE.
 - OPTIONAL HOLE LOCATION FOR GROUNDED GUIDE PIN OR ADDITIONAL GUIDE PIN SUPPORT. FOR GROUNDED GUIDE, HOLE TO BE PLATED, DRILL SIZE #2.58 PAD SIZE #3.50
 - THESE PARTS CONFORM TO MOLEX COSMETIC SPECIFICATION PS-45499-002 CLASS B.
 - HAPS (MOLEX ADVANCED PLATING SYSTEM).

MODULE ORIENTATION LEFT = 2

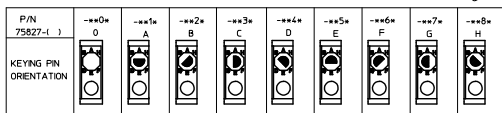
KEYING ORIENTATION COLUMN * * * * *

1 = A 1-10 COL

2 = B 2-25 COL

ETC...

PN LENGTH DM "H"	GOLD (Au) THICKNESS micrometers
0-3.55 mm	0.25 (HAPS)
1-4.55 mm	
2-5.55 mm	
3-5.55 mm	0.76
4-4.55 mm	
5-5.55 mm	
7-3.55 mm	
8-3.55 mm	1.27
9-5.55 mm	



LEAD-FREE PLATING

REV TO LEAD-FREE EC NO. UFP203-0090 CHANGES: 202/09/05 CHROMIUM-PLATE 202/09/05 APPROVALS: 202/07/05 REV:	QUALITY SYMBOLS ∇=0 ∇=0 ∇=0	GENERAL TOLERANCES (UNLESS SPECIFIED) mm INCH 4 PLACES ±--- ±--- 3 PLACES ±--- ±--- 2 PLACES ±0.25 ±--- 1 PLACE ±0.38 ±--- 0 PLACE ± ±	DIMENSION STYLE MM ONLY DRAWN BY DATE MARTIN 2005/07/01 CHECKED BY DATE JMYCZEK 2005/07/01 APPROVED BY DATE SREED 2005/07/01	SCALE 5:1 DESIGN UNITS METRIC THIRD ANGLE PROJECTION	TITLE GBX 2-PAIR, LF LEFT END BACKPLANE SALES ASSEMBLY
	MATERIAL NO. SEE TABLE DRAFT WHERE APPLICABLE MUST REMAIN WITHIN DIMENSIONS		ANGULAR ±1/2°	DOCUMENT NO. SD-75827-210	SHEET NO. 1 OF 1
	INCORPORATED AND SHOULD NOT BE USED WITHOUT WRITTEN PERMISSION				
	molex				