

Excellent Integrated System Limited

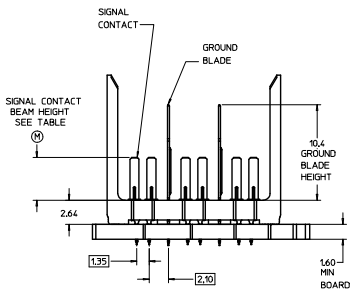
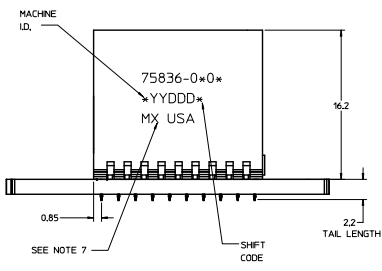
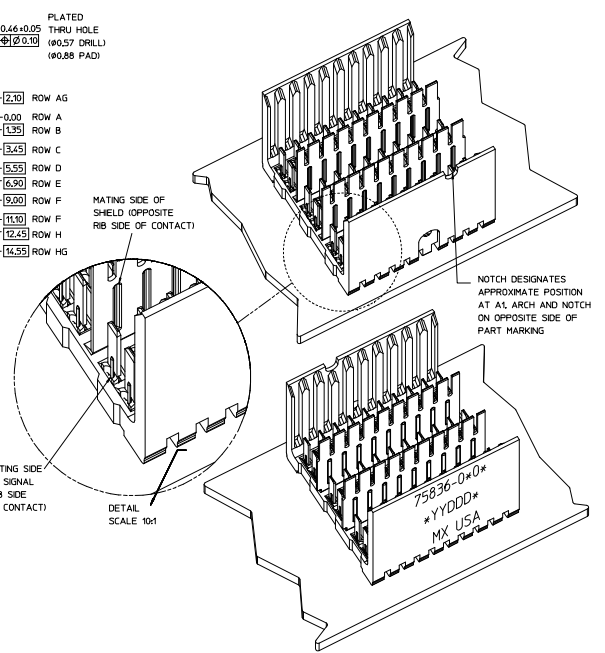
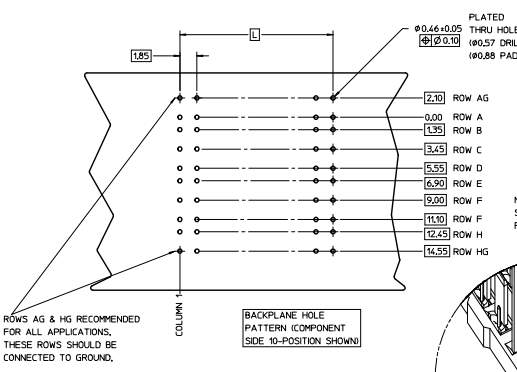
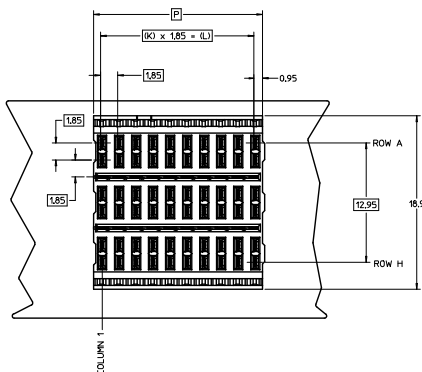
Stocking Distributor

Click to view price, real time Inventory, Delivery & Lifecycle Information:

[Molex Connector Corporation](#)
[0758360104](#)

For any questions, you can email us directly:

sales@integrated-circuit.com



PIN LENGTH DIM #1	GOLD (Au) THICKNESS micrometers
0-3.55 mm	0.25
4-4.55 mm	0.76
5-5.55 mm	1.27
6-6.55 mm	
7-7.55 mm	
8-8.55 mm	
9-9.55 mm	

PART NUMBER TABLE				
ASSY PART NO.	K	L	P	TOTAL NO. OF DIFFERENTIAL PAIRS
75836-010*	9	16.65	18.35	30
75836-020*	24	44.40	46.10	75
75836-050*	4	7.40	9.10	6

LEAD-FREE PLATING ON SIGNALS & GROUNDS.

- NOTES:**
1. MATERIAL: HOUSING - LIQUID CRYSTAL POLYMER (LCP) GLASS-FILLED, UL 94V-0. COLOR - GRAY. SIGNAL CONTACT AND GROUND BLADE - HIGH PERFORMANCE COPPER ALLOY.
 2. FINISHES: SELECTIVE GOLD (Au) 0.25 (MPSI), 0.76, OR 1.27 micrometers THICKNESS ON CONTACT AREA, SELECTIVE MATTE TIN (Sn) ON PCB TAILS, NICKEL (Ni) OVERALL.
 3. THIS PART CONFORMS TO MOLEX PRODUCT SPECIFICATION PS-75221-999.
 4. FOR MIXED CONTACT MATING LENGTHS CONSULT MOLEX FOR AVAILABILITY. CONTACT PAIRS MUST BE THE SAME LENGTH.
 5. FOR SPECIFIC PART NUMBER AND MATING INFORMATION PLEASE REFER TO CHART.
 6. PACKAGE PER PK-70873-576.
 7. EITHER MARK PART NUMBER AND DATE CODE APPROXIMATELY WHERE SHOWN OR PLACE A LABEL ON THE TUBE.

QUALITY SYMBOLS	GENERAL TOLERANCES (UNLESS SPECIFIED)		DIMENSION STYLE		SCALE	DESIGN UNITS	THIRD ANGLE PROJECTION	
	mm	INCH	MM ONLY	INCH ONLY				
▽=0	4 PLACES ±	---	---	---	DRAWN BY THOMAS 2006/10/13	DATE 2006/10/13	TITLE GBX 3-PAIR OPEN END BACKPLANE ASSEMBLY LEAD-FREE SALES DRAWING	
▽=0	3 PLACES ±	---	---	CHECKED BY KMLVEY 2006/10/16				DATE 2006/10/16
▽=0	2 PLACES ±	0.25	---	APPROVED BY J BINGHAM 2006/10/17				DATE 2006/10/17
▽=0	1 PLACE ±	0.38	---	---	MATERIAL NO.	DOCUMENT NO.	molex	
▽=0	0 PLACE ±	---	---	---	ANGULAR ±	---	SEE TABLE	
DRAFT WHERE APPLICABLE MUST REMAIN WITHIN DIMENSIONS								
SIZE D THIS DRAWING CONTAINS INFORMATION THAT IS PROPRIETARY TO MOLEX INCORPORATED AND SHOULD NOT BE USED WITHOUT WRITTEN PERMISSION								