

## Excellent Integrated System Limited

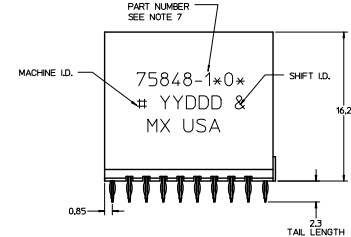
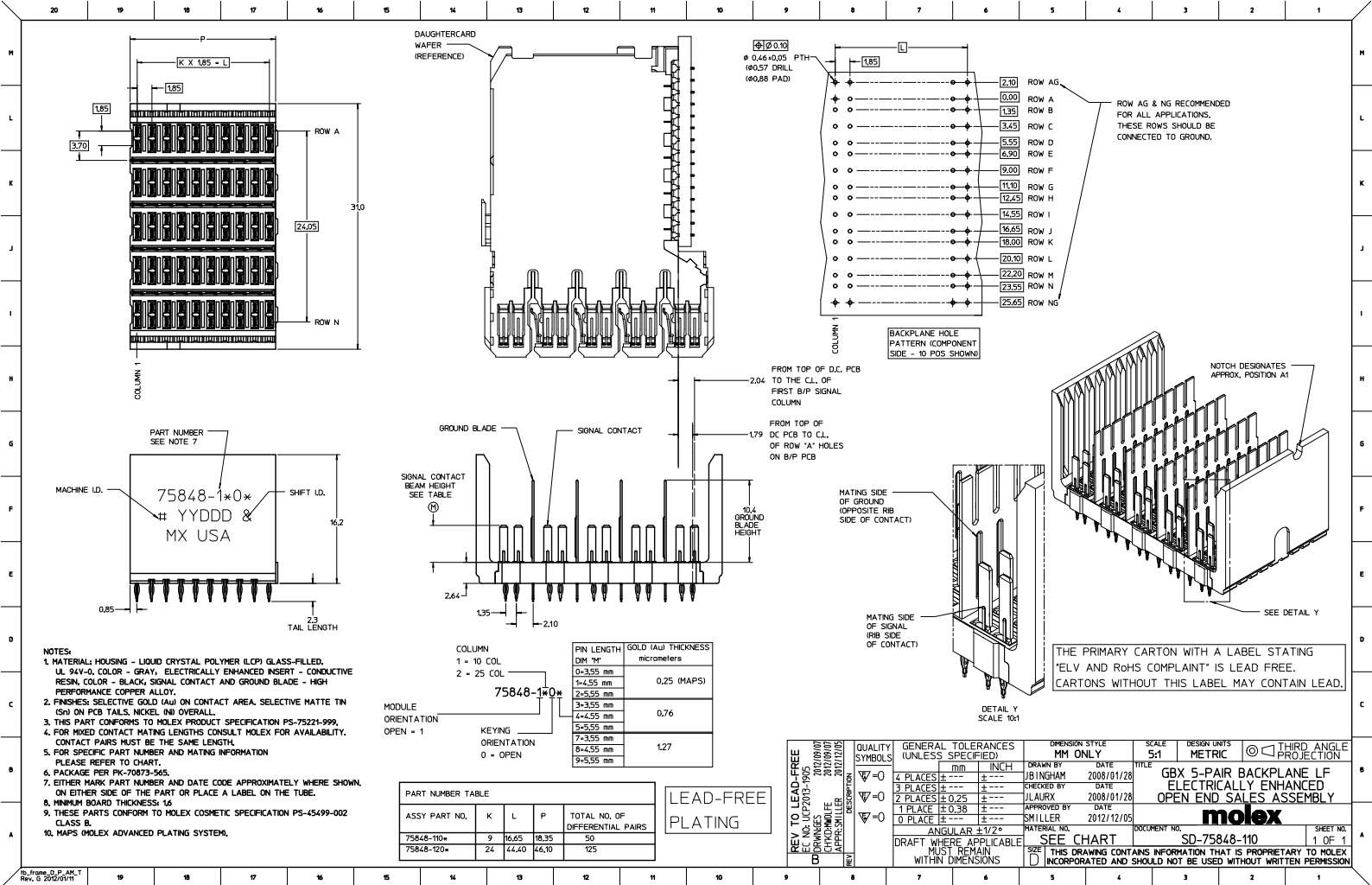
Stocking Distributor

Click to view price, real time Inventory, Delivery & Lifecycle Information:

[Molex Connector Corporation](#)  
[0758481105](#)

For any questions, you can email us directly:

[sales@integrated-circuit.com](mailto:sales@integrated-circuit.com)



- NOTES:**
- MATERIAL: HOUSING - LIQUID CRYSTAL POLYMER (LCP) GLASS-FILLED, UL 94V-0, COLOR - GRAY, ELECTRICALLY ENHANCED INSERT - CONDUCTIVE RESIN, COLOR - BLACK, SIGNAL CONTACT AND GROUND BLADE - HIGH PERFORMANCE COPPER ALLOY;
  - FINISHES: SELECTIVE GOLD (Au) ON CONTACT AREA, SELECTIVE MATTE TIN (Sn) ON PCB TAILS, NICKEL (Ni) OVERALL;
  - THIS PART CONFORMS TO MOLEX PRODUCT SPECIFICATION PS-75221-999;
  - FOR MIXED CONTACT MATING LENGTHS CONSULT MOLEX FOR AVAILABILITY, CONTACT PAIRS MUST BE THE SAME LENGTH;
  - FOR SPECIFIC PART NUMBER AND MATING INFORMATION PLEASE REFER TO CHART;
  - PACKAGE PER PK-70073-565;
  - EITHER MARK PART NUMBER AND DATE CODE APPROXIMATELY WHERE SHOWN, ON EITHER SIDE OF THE PART OR PLACE A LABEL ON THE TUBE;
  - MINIMUM BOARD THICKNESS: 1.6;
  - THESE PARTS CONFORM TO MOLEX COSMETIC SPECIFICATION PS-45499-002 CLASS B;
  - MAPS (MOLEX ADVANCED PLATING SYSTEM).

PIN LENGTH	GOLD (Au) THICKNESS
DIM "M"	micrometers
0-3.55 mm	0.25 (MAPS)
1-4.55 mm	
2-5.55 mm	0.76
3-3.55 mm	
4-4.55 mm	
5-5.55 mm	
6-4.55 mm	1.27
9-5.55 mm	

PART NUMBER TABLE			
ASSY PART NO.	K	L	P
75848-110*	9	16.65	18.35
75848-120*	24	44.40	46.10

LEAD-FREE PLATING

<b>REV. TO LEAD-FREE</b> E.C. NO. 14/27/03-1905 D. DRIVES 2012/09/07 CHROMIUM I.E. 2012/09/07 APPROVALS 2012/12/05 (REV)	<b>QUALITY SYMBOLS</b> ∇=0 ∇=0 ∇=0	<b>GENERAL TOLERANCES (UNLESS SPECIFIED)</b> 4 PLACES ± 0.25 3 PLACES ± 0.25 2 PLACES ± 0.25 1 PLACE ± 0.38 0 PLACE ± 0.38	<b>DIMENSION STYLE</b> MM ONLY	<b>SCALE</b> 5:1	<b>DESIGN UNITS</b> METRIC	<b>THIRD ANGLE PROJECTION</b> 
	<b>DRAWN BY</b> JB INGHAM <b>DATE</b> 2008/01/28 <b>CHECKED BY</b> JLAURX <b>DATE</b> 2008/01/28 <b>APPROVED BY</b> SMILLER <b>DATE</b> 2012/12/05	<b>TITLE</b> GBX 5-PAIR BACKPLANE LF ELECTRICALLY ENHANCED OPEN END SALES ASSEMBLY	<b>DOCUMENT NO.</b> SD-75848-110	<b>SHEET NO.</b> 1 OF 1		
	<b>WATERMARK</b> SEE CHART	<b>THIS DRAWING CONTAINS INFORMATION THAT IS PROPRIETARY TO MOLEX INCORPORATED AND SHOULD NOT BE USED WITHOUT WRITTEN PERMISSION</b>				
	<b>ANGULAR</b> ±1/2° <b>DRAFT</b> WHERE APPLICABLE <b>MUST REMAIN WITHIN DIMENSIONS</b>					

Rev. 0 of Part 1 Rev. 0 2012/09/07