

Excellent Integrated System Limited

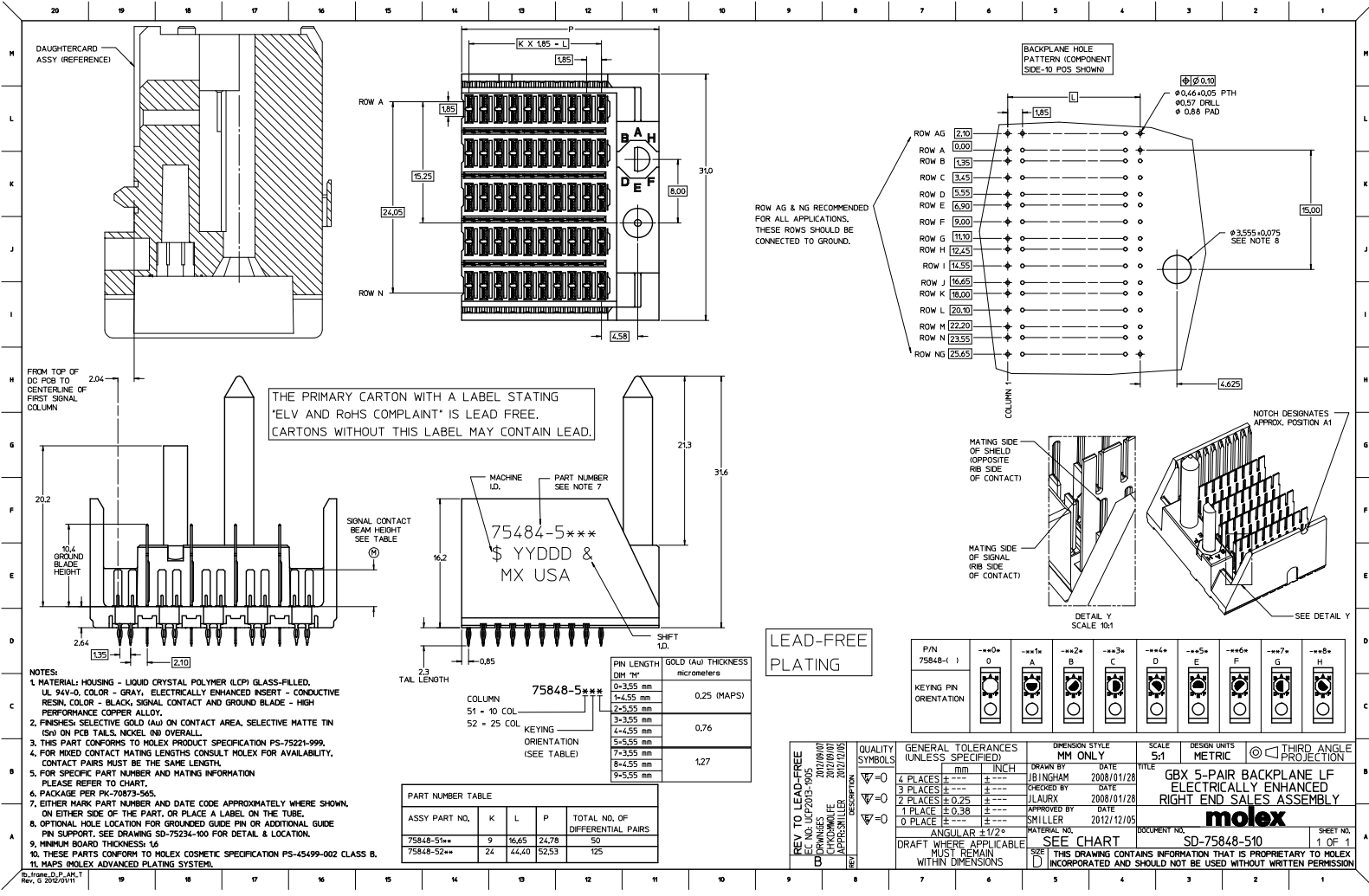
Stocking Distributor

Click to view price, real time Inventory, Delivery & Lifecycle Information:

[Molex Connector Corporation](#)
[0758485255](#)

For any questions, you can email us directly:

sales@integrated-circuit.com



THE PRIMARY CARTON WITH A LABEL STATING "ELV AND RoHS COMPLAINT" IS LEAD FREE. CARTONS WITHOUT THIS LABEL MAY CONTAIN LEAD.

MACHINE ID. PART NUMBER SEE NOTE 7
75484-5***
 \$ YD D D &
 M X USA

LEAD-FREE PLATING

PIN	0	1	2	3	4	5	6	7	8
KEYING PIN ORIENTATION									

- NOTES:
- MATERIAL; HOUSING - LIQUID CRYSTAL POLYMER (LCP) GLASS-FILLED. UL 94V-0. COLOR - GRAY. ELECTRICALLY ENHANCED INSERT - CONDUCTIVE RESIN. COLOR - BLACK. SIGNAL CONTACT AND GROUND BLADE - HIGH PERFORMANCE COPPER ALLOY.
 - FINISHES: SELECTIVE GOLD (Au) ON CONTACT AREA, SELECTIVE MATTE TIN (Sn) ON PCB TAILS, NICKEL (Ni) OVERALL.
 - THIS PART CONFORMS TO MOLEX PRODUCT SPECIFICATION PS-75221-999.
 - FOR MATED CONTACT MATING LENGTHS CONSULT MOLEX FOR AVAILABILITY. CONTACT PAIRS MUST BE THE SAME LENGTH.
 - FOR SPECIFIC PART NUMBER AND MATING INFORMATION PLEASE REFER TO CHART.
 - PACKAGE PER PK-70873-565.
 - EITHER MARK PART NUMBER AND DATE CODE APPROXIMATELY WHERE SHOWN, ON EITHER SIDE OF THE PART, OR PLACE A LABEL ON THE TUBE.
 - OPTIONAL HOLE LOCATION FOR GROUNDED GUIDE PIN OR ADDITIONAL GUIDE PIN SUPPORT. SEE DRAWING SD-75234-100 FOR DETAIL & LOCATION.
 - MINIMUM BOARD THICKNESS: 1.6
 - THESE PARTS CONFORM TO MOLEX COSMETIC SPECIFICATION PS-45499-002 CLASS B.
 - THESE PARTS CONFORM TO MOLEX ADVANCED PLATING SYSTEM.

PIN LENGTH DIM "M"	GOLD (Au) THICKNESS micrometers
0-3.55 mm	0.25 (MAPS)
1-4.55 mm	
2-5.55 mm	
3-3.55 mm	0.76
4-4.55 mm	
5-5.55 mm	
7-3.55 mm	1.27
8-4.55 mm	
9-5.55 mm	

ASSY PART NO.	K	L	P	TOTAL NO. OF DIFFERENTIAL PAIRS
75848-51**	9	16.65	24.78	50
75848-52**	24	44.40	52.53	125

QUALITY SYMBOLS	GENERAL TOLERANCES (UNLESS SPECIFIED)		DIMENSION STYLE		SCALE	DESIGN UNITS	THIRD ANGLE PROJECTION
	mm	INCH	MM ONLY	INCH ONLY			
$\nabla=0$	4 PLACES	±0.10	+	DATE	5:1	METRIC	
$\nabla=0$	3 PLACES	±0.25	+	DATE			
$\nabla=0$	1 PLACE	±0.38	+	DATE			
$\nabla=0$	0 PLACE	±0.50	+	DATE			

REV TO LEAD-FREE
 EC MOLLEP2013-9005
 DRWNGS 2012/09/07
 CHOKWALE 2012/09/07
 APPRSHILLES 2012/10/05
 DATE

QUALITY SYMBOLS: $\nabla=0$, $\nabla=0$, $\nabla=0$

GENERAL TOLERANCES (UNLESS SPECIFIED): 4 PLACES ±0.10, 3 PLACES ±0.25, 1 PLACE ±0.38, 0 PLACE ±0.50

DIMENSION STYLE: MM ONLY

SCALE: 5:1

DESIGN UNITS: METRIC

THIRD ANGLE PROJECTION

DRAWN BY: JB INGHAM, DATE: 2008/10/1/28

CHECKED BY: JLAURX, DATE: 2008/10/1/28

APPROVED BY: SMILLER, DATE: 2012/12/10/5

MATERIAL NO: ANGULAR ±1/2°

DRAFT WHERE APPLICABLE MUST REMAIN WITHIN DIMENSIONS

SEE CHART

INCORPORATED AND SHOULD NOT BE USED WITHOUT WRITTEN PERMISSION

TITLE: GBX 5-PAIR BACKPLANE LF ELECTRICALLY ENHANCED RIGHT END SALES ASSEMBLY

molex

DOCUMENT NO: SD-75848-510

SHEET NO: 1 OF 1