

Excellent Integrated System Limited

Stocking Distributor

Click to view price, real time Inventory, Delivery & Lifecycle Information:

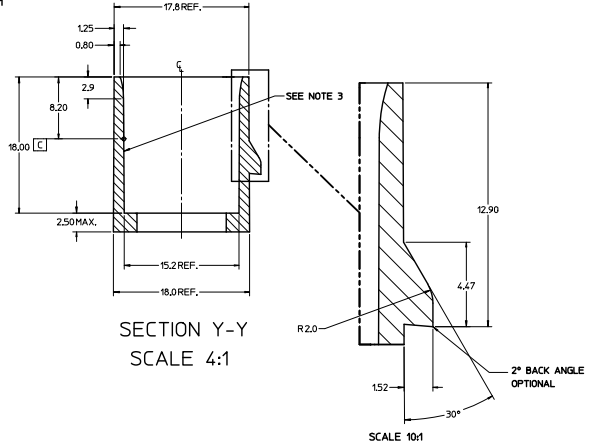
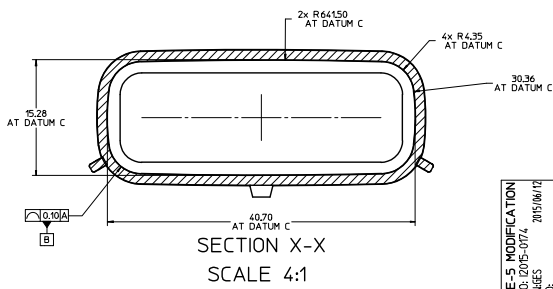
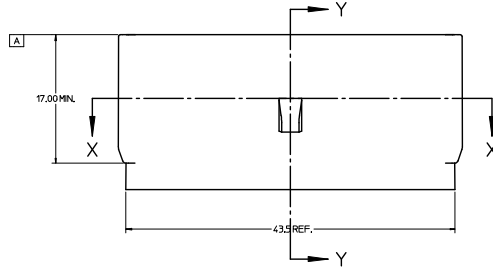
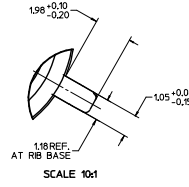
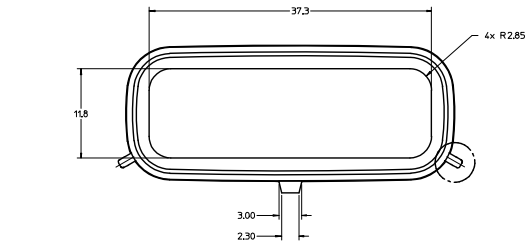
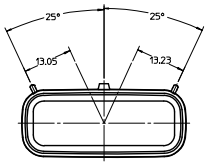
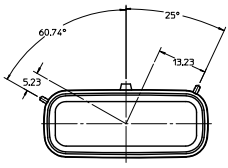
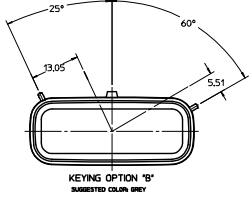
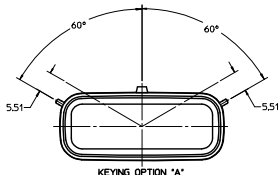
[Molex Connector Corporation](#)
[0759001201](#)

For any questions, you can email us directly:

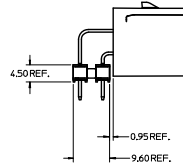
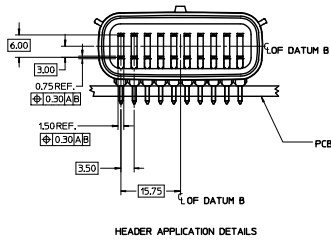
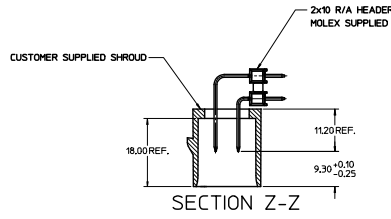
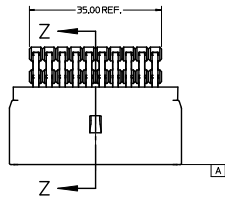
sales@integrated-circuit.com

CUSTOMER SHROUD DESIGN DETAILS

- NOTES:
1. REFER TO MOLEX SALES DRAWING SD-75900-001 FOR THE R/A HEADER ASSEMBLY PRODUCT DETAILS AND RECOMMENDED PCB LAYOUT.
 2. KEYING OPTIONS A-D AND SUGGESTED COLORS COMPLY TO THE POLARIZATION STANDARDS ESTABLISHED FOR MATING WITH A MX150 FEMALE CONNECTOR.
 3. INTERIOR SHROUD SURFACE MUST BE FREE OF DEFECTS AND PARTING LINES ALL AROUND TO ENSURE PROPER SEALING OF THE MATING MX150 FEMALE CONNECTOR.
 4. A FULL SHROUD ON THE MATING CONNECTOR IS REQUIRED TO INSURE THE HEADER SHROUD POLARIZATION FEATURES (OPTIONS A-D) WILL FUNCTION PROPERLY. THE FULL SHROUD ALSO PREVENTS SCOOP DAMAGE TO THE HEADER CONTACTS.
 5. PERMISSIBLE DRAFT ANGLE 0.25° MAXIMUM.
 6. RADI ON ALL CORNERS SHOWN SHARP OR ALL UNSPECIFIED RADI 0.25 EXCEPT AS NOTED.
 7. DIMENSIONS SHOWN ABOUT A CENTERLINE ARE SYMMETRICAL ABOUT THAT CENTERLINE WITHIN HALF THE SPECIFIED TOLERANCE.

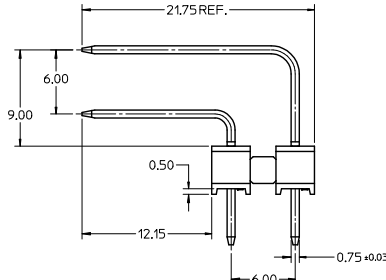
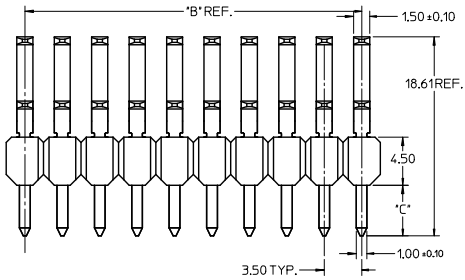
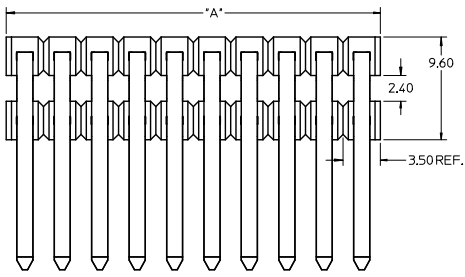


| QUALITY SYMBOLS | GENERAL TOLERANCES (UNLESS SPECIFIED) | | DIMENSION STYLE | | SCALE | DESIGN UNITS | THIRD ANGLE PROJECTION |
|-----------------|---------------------------------------|------|--|----------|------------------------|--------------|---|
| | mm | INCH | MM ONLY | DATE | | | |
| 4 PLACES ± | --- | ±--- | DRAWN BY | 04/26/07 | 2:1 | METRIC | APPLICATION SPEC 2X10 MX150 R/A HEADER SHROUD DETAILS |
| 3 PLACES ± | --- | ±--- | CHECKED BY | 04/26/07 | | | |
| 2 PLACES ± | 0.10 | ±--- | APPROVED BY | 04/26/07 | | | |
| 1 PLACE ± | 0.2 | ±--- | DATE | 04/26/07 | | | |
| 0 PLACE ± | --- | ±--- | DATE | 04/26/07 | GENERAL NO. 75900-2100 | | DOCUMENT NO. AS-75900-210 |
| ANGULAR ±1/2° | | | DRAFT WHERE APPLICABLE MUST REMAIN WITHIN DIMENSIONS | | SIZE A | | SHEET NO. 1 OF 2 |



NOTES:
1. ADHERENCE TO THE HEADER APPLICATION DETAILS IS IMPERATIVE TO ENSURE PROPER SHROUD SEALING AND CONTACT ALIGNMENT WHEN MATED WITH A MX150 FEMALE CONNECTOR.

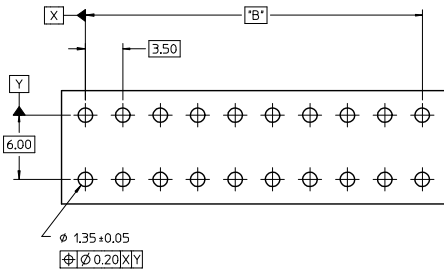
| | | | | | | | |
|--|---|---|-----------------|---|------------------|------------------------|------------------------|
| SEE SHEET 1 FOR DIMENSIONS CHECK APPROVED APPROPRIATE | QUALITY SYMBOLS | GENERAL TOLERANCES (UNLESS SPECIFIED) | DIMENSION STYLE | SCALE | DESIGN UNITS | THIRD ANGLE PROJECTION | |
| | 4 PLACES ± 0.10 3 PLACES ± 0.15 2 PLACES ± 0.20 1 PLACE ± 0.25 0 PLACE ± 0.30 | mm INCH ± 0.10 ± 0.004 ± 0.15 ± 0.006 ± 0.20 ± 0.008 ± 0.25 ± 0.010 | MM ONLY | DATE | 2:1 | METRIC | THIRD ANGLE PROJECTION |
| | | | DRAWN BY | DATE | TITLE | | |
| | | | CHECKED | DATE | APPLICATION SPEC | | |
| | | APPROVED | DATE | 2X10 MX150 R/A HEADER SHROUD DETAILS | | | |
| | | | DATE | molex | | | |
| | | | DATE | MATERIAL NO. 75900-2100 DOCUMENT NO. AS-75900-210 | | SHEET NO. 2 OF 2 | |
| | | | DATE | THIS DRAWING CONTAINS INFORMATION THAT IS PROPRIETARY TO MOLEX INCORPORATED AND SHOULD NOT BE USED WITHOUT WRITTEN PERMISSION | | | |



NOTES:

1. TERMINAL MAT'L: ALLOY C26000, CARTRIDGE BRASS
2. WAFER MAT'L: 30% GLASS FILLED LCP, 94V-0, COLOR BLACK.
3. TERMINAL PLATING:
 OPTION 4 - 1.5µm MIN MATTE TIN OVERALL OVER 1.25µm NICKEL OVERALL
 OPTION 1 - 2.5µm MIN MATTE TIN OVERALL OVER 1.25µm NICKEL OVERALL
 OPTION 2 - 1.25µm NICKEL OVERALL 2.5µm MIN SELECT MATTE TIN PC TAIL AREA 0.05-0.25µm SELECT GOLD CONTACT AREA
 OPTION 3 - 1.25µm NICKEL OVERALL 2.5µm MIN SELECT MATTE TIN PC TAIL AREA 0.75µm SELECT GOLD CONTACT AREA
4. HEADER ASSEMBLIES ARE TUBE PACKAGED PER PK-36518-351.

| PKT SIZE | PLATING OPTION | MATERIAL NUMBER | *A* DIM | *B* DIM | *C* DIM | MATERIAL NUMBER | *A* DIM | *B* DIM | *C* DIM |
|----------|----------------|-----------------|---------|----------|---------|-----------------|---------|----------|---------|
| 2 x 2 | 1 | 75900-1121 | 7.0 | 3.50 REF | | 75900-1122 | 7.0 | 3.50 REF | |
| | 2 | 75900-1221 | | | | 75900-1222 | | | |
| | 3 | 75900-1321 | | | | 75900-1322 | | | |
| | 4 | 75900-1421 | | | | 75900-1422 | | | |
| 2 x 3 | 1 | 75900-1131 | 10.5 | 7.00 | | 75900-1132 | 10.5 | 7.00 | |
| | 2 | 75900-1231 | | | | 75900-1232 | | | |
| | 3 | 75900-1331 | | | | 75900-1332 | | | |
| | 4 | 75900-1431 | | | | 75900-1432 | | | |
| 2 x 4 | 1 | 75900-1141 | 14.0 | 10.50 | | 75900-1142 | 14.0 | 10.50 | |
| | 2 | 75900-1241 | | | | 75900-1242 | | | |
| | 3 | 75900-1341 | | | | 75900-1342 | | | |
| | 4 | 75900-1441 | | | | 75900-1442 | | | |
| 2 x 5 | 1 | 75900-1151 | 17.5 | 14.00 | 3.05 | 75900-1152 | 17.5 | 14.00 | 4.75 |
| | 2 | 75900-1251 | | | | 75900-1252 | | | |
| | 3 | 75900-1351 | | | | 75900-1352 | | | |
| | 4 | 75900-1451 | | | | 75900-1452 | | | |
| 2 x 6 | 1 | 75900-1161 | 21.0 | 17.50 | | 75900-1162 | 21.0 | 17.50 | |
| | 2 | 75900-1261 | | | | 75900-1262 | | | |
| | 3 | 75900-1361 | | | | 75900-1362 | | | |
| | 4 | 75900-1461 | | | | 75900-1462 | | | |
| 2 x 8 | 1 | 75900-1181 | 28.0 | 24.50 | | 75900-1182 | 28.0 | 24.50 | |
| | 2 | 75900-1281 | | | | 75900-1282 | | | |
| | 3 | 75900-1381 | | | | 75900-1382 | | | |
| | 4 | 75900-1481 | | | | 75900-1482 | | | |
| 2 x 10 | 1 | 75900-1101 | 35.0 | 31.50 | | 75900-1102 | 35.0 | 31.50 | |
| | 2 | 75900-1201 | | | | 75900-1202 | | | |
| | 3 | 75900-1301 | | | | 75900-1302 | | | |
| | 4 | 75900-1401 | | | | 75900-1402 | | | |



RECOMMENDED PCB LAYOUT

| | | | | | | | |
|--|--|-------------------|---|-----------------|---------|---|------------------------|
| PK SPEC UPDATED EC NO: 2016-0115 DRAWN: BR02 CHKD: C | DESCRIPTION 2016/05/16 2016/06/03 APPR: KPRASAD | QUALITY SYMBOLS | GENERAL TOLERANCES (UNLESS SPECIFIED) | DIMENSION STYLE | SCALE | DESIGN UNITS | THIRD ANGLE PROJECTION |
| | | ▽=0 ▽=0 ▽=0 | mm INCH 4 PLACES ±--- ±--- 3 PLACES ±--- ±--- 2 PLACES ±0.13 ±--- 1 PLACE ±0.25 ±--- 0 PLACE ±--- ±--- | MM ONLY | 4:1 | METRIC | |
| | | | ANGULAR ±1/2° | DRAWN BY | DATE | TITLE | |
| | | | DRAFT WHERE APPLICABLE MUST REMAIN WITHIN DIMENSIONS | IMCLELL | 1/25/06 | MX150 RIGHT ANGLE DUAL ROW UNSHROUDED HEADER ASSEMBLY | |
| | | | | CHECKED BY | DATE | molex | |
| | | | | APPROVED BY | DATE | | |
| | | | | BANAKIS | 1/25/06 | DOCUMENT NO. SD-75900-001 | |
| | | | | SEE CHART | | SHEET NO. 1 OF 1 | |
| | | | | SIZE A2 | | THIS DRAWING CONTAINS INFORMATION THAT IS PROPRIETARY TO MOLEX INCORPORATED AND SHOULD NOT BE USED WITHOUT WRITTEN PERMISSION | |