

Excellent Integrated System Limited

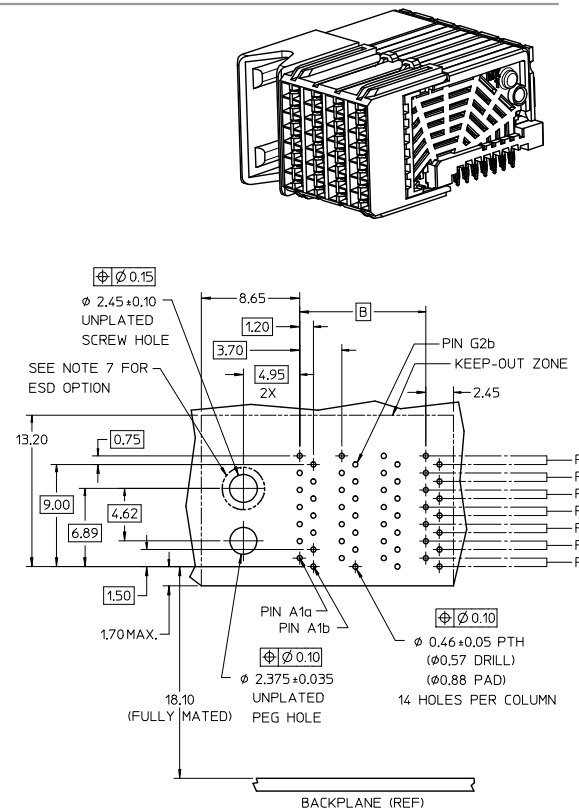
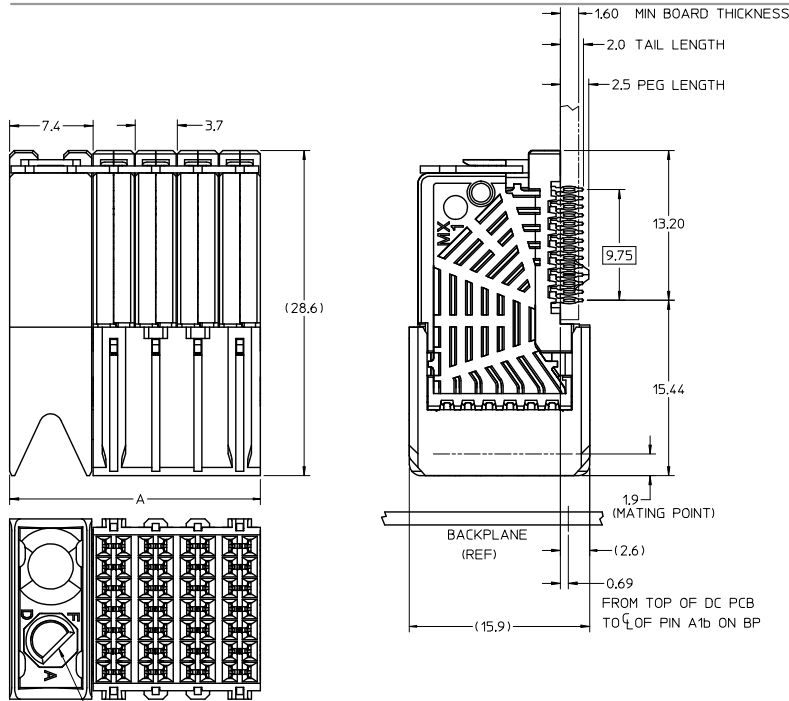
Stocking Distributor

Click to view price, real time Inventory, Delivery & Lifecycle Information:

[Molex Connector Corporation](#)
[0760202006](#)





For any questions, you can email us directly:

sales@integrated-circuit.com



DAUGHTERCARD HOLE PATTERN
(CONNECTOR SIDE)

- NOTES:
1. MATERIALS: HOUSING - LIQUID CRYSTAL POLYMER (LCP) GLASS-FILLED, UL 94V-0
TERMINALS - HIGH PERFORMANCE COPPER ALLOY
 2. FINISH: SELECTIVE GOLD (Au) IN CONTACT AREA,
SELECTIVE MATTE TIN (Sn) IN TAIL AREA,
NICKEL (Ni) UNDERPLATE OVERALL.
 3. REFER TO MOLEX PRODUCT SPECIFICATION PS-75710-999 FOR PERFORMANCE SPECS.
 4. PRODUCT IS PACKAGED PER PK-70873-607.
 5. THIS PART CONFORMS TO CLASS B REQUIREMENTS OF COSMETIC SPEC PS-45499-002.
 6. GUIDED PARTS TO BE SHIPPED WITH 2-32 TYPE AB
SELF-TAPPING SCREW P/N 73726-0005.
 7. FOR GROUNDED GUIDE MODULES USE DIA 2.45+/-0.10 (PTH), DIA 2.58 (DRILL),
AND DIA 4.50 (PAD).
 8. MAPS (MOLEX ADVANCED PLATING SYSTEM).

ADD 50 GOLD EC NO: UCP2014-312 DRW:WOLFE CHK:OSWANG APPR:SMILLER REV	DESCRIPTION	QUALITY SYMBOLS	GENERAL TOLERANCES (UNLESS SPECIFIED)				DIMENSION STYLE		SCALE	DESIGN UNITS	THIRD ANGLE PROJECTION	TITLE I-TRAC DAUGHTERCARD 7 ROW GUIDE LEFT SIGNAL MODULE molex SD-76020-002		
							MM ONLY		4:1	METRIC				
			mm		INCH		DRAWN BY	DATE						
			 =0	4 PLACES	±	---	±	---	MCARRANZA	3/20/06				
			 =0	3 PLACES	±	---	±	---	CHECKED BY	DATE				
			 =0	2 PLACES	±	0.13	±	---	BPISZCZOR	2007/03/07				
				1 PLACE	±	0.25	±	---	APPROVED BY	DATE				
				0 PLACE	±	---	±	---	JLAURX	2007/03/07				
							ANGULAR ±1/2°		MATERIAL NO.		DOCUMENT NO.		SHEET NO.	
			DRAFT WHERE APPLICABLE MUST REMAIN WITHIN DIMENSIONS				SEE CHART						1 OF 2	
SIZE C THIS DRAWING CONTAINS INFORMATION THAT IS PROPRIETARY TO MOLEX INCORPORATED AND SHOULD NOT BE USED WITHOUT WRITTEN PERMISSION														

MATERIAL NUMBER	# OF COLUMNS	DIM. "A" MAX.	DIM. "B"
76020-***4	4	22.20	11.10
76020-***6	6	29.60	18.50
76020-***0	10	44.40	33.30

76020-***

MODULE STYLE AND TAIL PLATING TYPE
2 = GUIDE LEFT, MATTE TIN (FORMERLY TIN/LEAD)
3 = GUIDE LEFT, MATTE TIN

POLARIZATION KEY ORIENTATION

0 = NO KEY

1 = A

2 = B

3 = C

4 = D

5 = E

6 = F

7 = G

8 = H

OF COLUMNS/PLATING

04 = 4 COL. 30 GOLD

06 = 6 COL. 30 GOLD

10 = 10 COL. 30 GOLD

44 = 4 COL. 10 GOLD (MAPS)

46 = 6 COL. 10 GOLD (MAPS)

40 = 10 COL. 10 GOLD (MAPS)

54 = 4 COL. W/ESD CLIP. 30 GOLD

56 = 6 COL. W/ESD CLIP. 30 GOLD

50 = 10 COL. W/ESD CLIP. 30 GOLD

74 = 4 COL. W/ESD CLIP. 10 GOLD (MAPS)

76 = 6 COL. W/ESD CLIP. 10 GOLD (MAPS)

70 = 10 COL. W/ESD CLIP. 10 GOLD (MAPS)

84 = 4 COL. 50 GOLD


86 = 6 COL. 50 GOLD

80 = 10 COL. 50 GOLD

94 = 4 COL. W/ESD CLIP. 50 GOLD

96 = 6 COL. W/ESD CLIP. 50 GOLD

90 = 10 COL. W/ESD CLIP. 50 GOLD

SEE SHEET 1 EC NO: UCP2014-3112 DRAWN BY: 2014/01/28 CHKD BY: 2014/01/28 APPR: MILLER 2014/02/11	QUALITY SYMBOLS ▽=0 ▽=0 ▽=0	DESCRIPTION REV	GENERAL TOLERANCES (UNLESS SPECIFIED)		DIMENSION STYLE MM ONLY		SCALE 1:1	DESIGN UNITS METRIC	 THIRD ANGLE PROJECTION	TITLE I-TRAC DAUGHTERCARD 7 ROW GUIDE LEFT SIGNAL MODULE molex				
			4 PLACES	±	---	±	---	DRAWN BY MCARRANZA			DATE 3/20/06			
				3 PLACES	±	---	±						---	
					2 PLACES	±	---						±	---
						±	0.13						±	---
			1 PLACE	±	0.25	±	---	CHECKED BY BPISZCZOR			DATE 2007/03/07			
				0 PLACE	±	---	±						---	
			ANGULAR ±1/2°		DRAFT WHERE APPLICABLE MUST REMAIN WITHIN DIMENSIONS	MATERIAL NO.		DOCUMENT NO.			SD-76020-002		SHEET NO. 2 OF 2	
			SEE CHART			SIZE C		THIS DRAWING CONTAINS INFORMATION THAT IS PROPRIETARY TO MOLEX INCORPORATED AND SHOULD NOT BE USED WITHOUT WRITTEN PERMISSION						