

Excellent Integrated System Limited

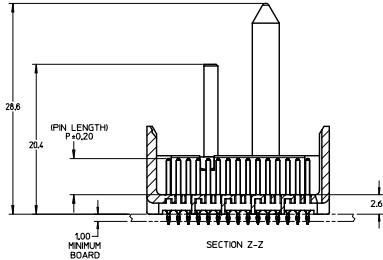
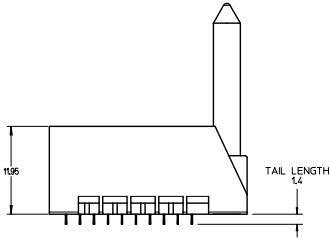
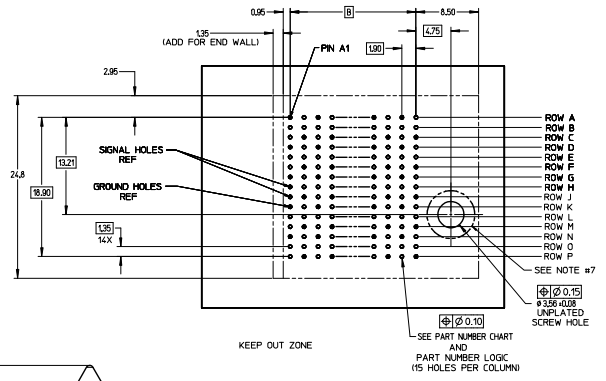
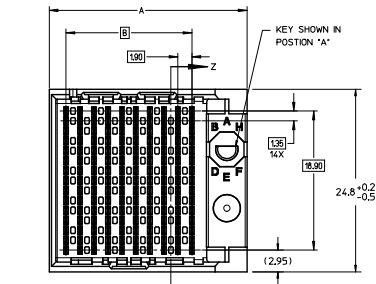
Stocking Distributor

Click to view price, real time Inventory, Delivery & Lifecycle Information:

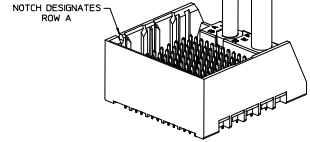
[Molex Connector Corporation](#)
[0760554607](#)

For any questions, you can email us directly:

sales@integrated-circuit.com



RIGHT GUIDED
BACKPLANE HOLE PATTERN
(CONNECTOR SIDE)
SEE NOTE 12



NOTES:

- MATERIALS: HOUSING - LIQUID CRYSTAL POLYMER (LCP) GLASS-FILLED, UL94V-0
TERMINALS - HIGH PERFORMANCE COPPER ALLOY
- FINISH: 30μ MIN GOLD IN CONTACT AREA, SELECTIVE TIN ON PCB TAILS, NICKEL OVERALL.
- REFER TO MOLEX PRODUCT SPECIFICATION PS-76060-999 FOR PERFORMANCE SPECIFICATIONS AND ADDITIONAL PCB INFORMATION.
- THIS PART CONFORMS TO CLASS B REQUIREMENTS OF MOLEX COSMETIC SPEC PS-45499-002.
- PACKAGE PER: PK-70873-759.
- SEE SHEETS 2 & 3 FOR PART NUMBERS AND BOARD RELATIONSHIPS.
- FOR GROUNDED GUIDE PINS USE DIA. 3.56 +/-0.08 (PTH) DIA. 3.66 (DRILL) AND DIA. 6.5 (PAD).
- MATES WITH IMPACT DC SERIES NO. 76060.
- KEEP OUT ZONE FOR BP HOUSING LENGTH INCLUDES AN ADDITIONAL 10MM TO ACCOMMODATE FOR SPACE REQUIRED BY DC FRONT HOUSING.
- REFER TO MOLEX PCB ROUTING GUIDE AS-76060-990 FOR ANTI-PAD AND ROUTING RECOMMENDATIONS.
- CONNECTORS SUPPLIED WITH A 2-56 UNC-2A SCREW.
- THESE DIMENSIONS REPRESENT THE AREA NEEDED TO ACCOMMODATE CONNECTOR INSERTION AND REPAIR ON THE PC BOARD. THIS IS REFERRED TO AS THE "CONNECTOR KEEP OUT ZONE" AND DOES NOT REPRESENT THE ACTUAL PERIMETER OF THE CONNECTOR. WHEN LAYING OUT A PC BOARD FOR CONNECTORS STACKED TOGETHER, USE A 19mm PROGRESSION.

| | | | | | | |
|---|---|---|---|--|---|---|
| CONVERT TO LEAD-FREE EC NO. UEP2003-2008 DRAWN BY BARBA 2010/11/26 CHECKED BY NINGMA 2010/12/18 APPR/SHTL BY JLAUR 2010/12/18 DATE | QUALITY SYMBOLS ∇=0 ∇=0 ∇=0 | GENERAL TOLERANCES (UNLESS SPECIFIED) 4 PLACES ±--- INCH 3 PLACES ±--- INCH 2 PLACES ±0.13 INCH 1 PLACE ±0.25 INCH 0 PLACE ± INCH ANGULAR ±1/2° DRAFT WHERE APPLICABLE MUST REMAIN WITHIN DIMENSIONS | DIMENSION STYLE MM ONLY DRAWN BY MSANDBERG DATE 05/24/2007 CHECKED BY JLAUR DATE 05/24/2007 APPROVED BY JLAUR DATE 2010/10/15 | SCALE 4:1 DESIGN UNITS METRIC THIRD ANGLE PROJECTION | TITLE IMPACT 5 PAIR HEADER RIGHT GUIDED ASSEMBLY SALES DRAWING | MATERIAL NO. SEE TABLE DOCUMENT NO. SD-76055-003 SHEET NO. 1 OF 3 |
| | THIS DRAWING CONTAINS INFORMATION THAT IS PROPRIETARY TO MOLEX INCORPORATED AND SHOULD NOT BE USED WITHOUT WRITTEN PERMISSION | | | | | |
| | molex | | | | | |
| | R:\jmgm_02_p_Alt-T Rev. 5 2010/11/11 | | | | | |

PART NUMBER LOGIC

76055-****

MODULE TYPE
5 = GUIDE RIGHT, TIN
9 = GUIDE RIGHT END WALL, TIN

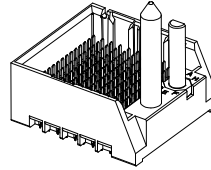
PIN LENGTH (P)
3 = 4.50 (SHORT COMPLIANT, 0.46±0.05 PTH)
4 = 4.90 (SHORT COMPLIANT, 0.46±0.05 PTH)
5 = 5.50 (SHORT COMPLIANT, 0.46±0.05 PTH)
6 = 4.50 (MICRO COMPLIANT, 0.39±0.05 PTH)
7 = 4.90 (MICRO COMPLIANT, 0.39±0.05 PTH)
8 = 5.50 (MICRO COMPLIANT, 0.39±0.05 PTH)

KEY ORIENTATION
0 = NO KEY
1 = A
2 = B
3 = C
4 = D
5 = E
6 = F
7 = G
8 = H

OF COLUMNS
1 = 10 COL
2 = 12 COL
6 = 16 COL
7 = 14 COL

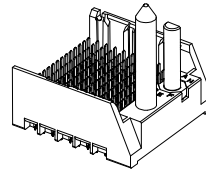
PART NUMBER TABLE

| MATERIAL NUMBER | # OF COLUMNS | # OF DIFF PAIR | DIM "A" | DIM "B" | |
|-----------------|--------------|----------------|---------|---------|-----------------------------------|
| 76055-1** | 10 | 50 | 26.9 | 17.10 | GUIDE RIGHT END WALL OPTION |
| 76055-2** | 12 | 60 | 30.7 | 20.90 | |
| 76055-7** | 14 | 70 | 34.5 | 24.70 | |
| 76055-6** | 16 | 80 | 38.3 | 28.50 | |



GUIDE RIGHT
END WALL
OPTION

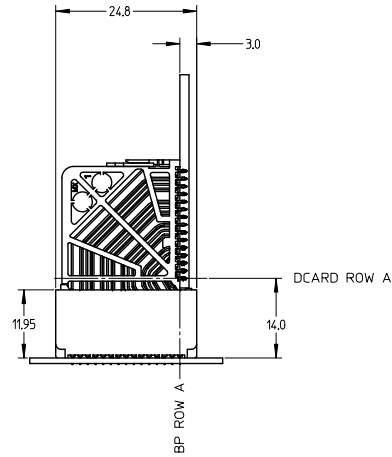
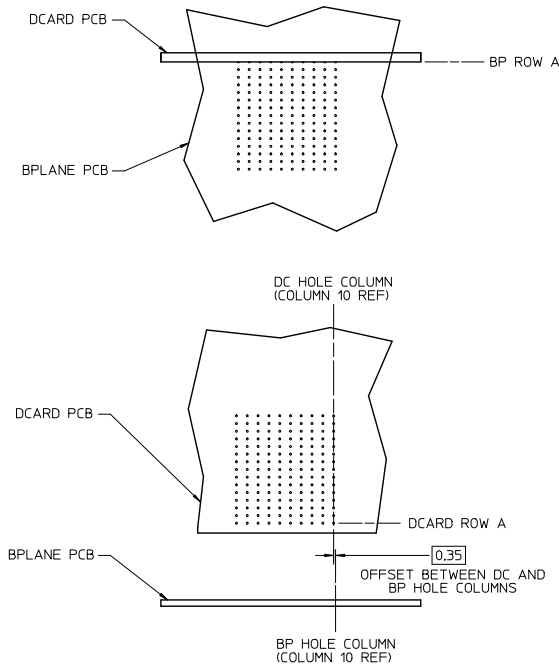
| MATERIAL NUMBER | # OF COLUMNS | # OF DIFF PAIR | DIM "A" | DIM "B" | |
|-----------------|--------------|----------------|---------|---------|------------------------------------|
| 76055-1** | 10 | 50 | 25.5 | 17.10 | GUIDE RIGHT OPEN WALL OPTION |
| 76055-2** | 12 | 60 | 29.3 | 20.90 | |
| 76055-7** | 14 | 70 | 33.1 | 24.70 | |
| 76055-6** | 16 | 80 | 36.9 | 28.50 | |



GUIDE RIGHT
OPEN WALL
OPTION

| | | | | | | | | | |
|---|--------------------------------------|---------------------------------------|------------|--|----------|--------------|--|---------------------------|--|
| SEE SHEET 1 EC NO: UCP2015-2078 DRAWN BY: IBARRA CHKD BY: INGHAM APPR: MILLER DATE: 2012/11/28 DATE: 2012/12/18 DATE: 2012/12/31 | QUALITY SYMBOLS ∇=0 ∇=0 ∇=0 | GENERAL TOLERANCES (UNLESS SPECIFIED) | | DIMENSION STYLE MM ONLY | | SCALE 2:1 | DESIGN UNITS METRIC | THIRD ANGLE PROJECTION | |
| | | 4 PLACES ± --- ± --- | mm | INCH | DRAWN BY | DATE | TITLE IMPACT 5 PAIR HEADER RIGHT GUIDED ASSEMBLY SALES DRAWING molex MATERIAL NO. SD-76055-003 DOCUMENT NO. SHEET NO. 2 OF 3 | | |
| | | 3 PLACES ± --- ± --- | MSANDBERG | 05/24/2007 | | | | | |
| | | 2 PLACES ± 0.13 ± --- | CHECKED BY | DATE | | | | | |
| 1 PLACE ± 0.25 ± --- | JLAURX | 05/24/2007 | | | | | | | |
| 0 PLACE ± ± | APPROVED BY | DATE | JLAURX | 2010/10/15 | | | | | |
| ANGULAR ± 1/2° DRAFT WHERE APPLICABLE MUST REMAIN WITHIN DIMENSIONS | | SEE TABLE | | THIS DRAWING CONTAINS INFORMATION THAT IS PROPRIETARY TO MOLEX INCORPORATED AND SHOULD NOT BE USED WITHOUT WRITTEN PERMISSION | | | | | |

IMPACT 5 PAIR
BOARD RELATIONSHIPS



| | | | | | | |
|---|-----------------|--|----------------------|-----------|--------------|------------------------|
| SEE SHEET 1 EC NO: UCF2013-2078 DRAWN BY: BARRA 2012/11/28 CHECKED BY: INGHAM 2012/12/18 APPROVED BY: MILLER 2012/12/31 | QUALITY SYMBOLS | GENERAL TOLERANCES (UNLESS SPECIFIED) | DIMENSION STYLE | SCALE | DESIGN UNITS | THIRD ANGLE PROJECTION |
| | ▽=0 | mm INCH | MM ONLY | 2:1 | METRIC | |
| | ▽=0 | 4 PLACES ± --- ± --- | DRAWN BY DATE | | | |
| | ▽=0 | 3 PLACES ± --- ± --- | MSANDBERG 05/24/2007 | | | |
| | | 2 PLACES ± 0.13 ± --- | CHECKED BY DATE | | | |
| | | 1 PLACE ± 0.25 ± --- | JLAURX 05/24/2007 | | | |
| | | 0 PLACE ± ± | APPROVED BY DATE | | | |
| | | ANGULAR ± 1/2° | JLAURX 2010/10/15 | | | |
| | | DRAFT WHERE APPLICABLE MUST REMAIN WITHIN DIMENSIONS | MATERIAL NO. | SEE TABLE | DOCUMENT NO. | |
| | | | SIZE C | | SD-76055-003 | |
| | | | | | | SHEET NO. 3 OF 3 |
| | | | | | | |