

## Excellent Integrated System Limited

Stocking Distributor

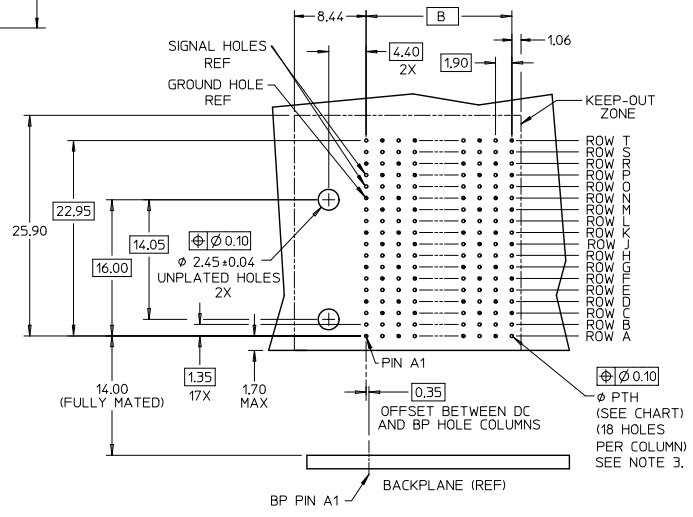
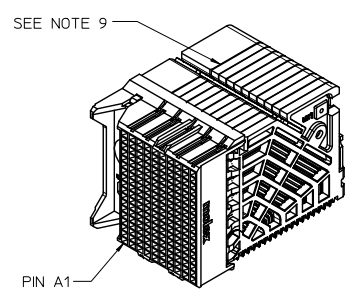
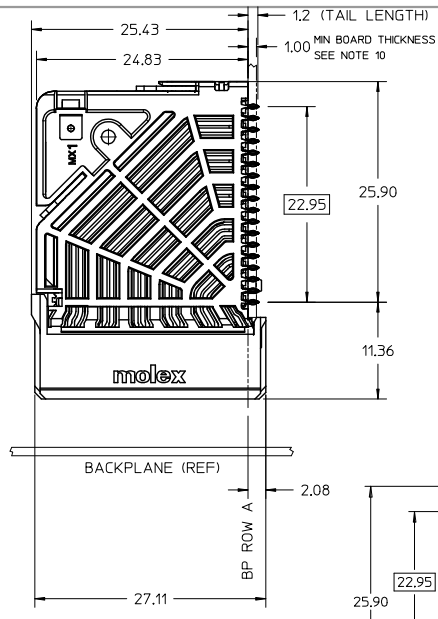
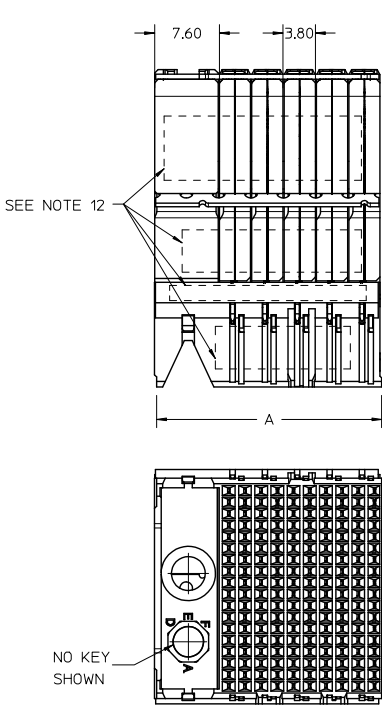
Click to view price, real time Inventory, Delivery & Lifecycle Information:

[Molex Connector Corporation](#)  
[0761502016](#)

For any questions, you can email us directly:

[sales@integrated-circuit.com](mailto:sales@integrated-circuit.com)

13 12 11 10 9 8 7 6 5 4 3 2 1



- NOTES:
1. MATERIALS: HOUSING - LIQUID CRYSTAL POLYMER (LCP), GLASS-FILLED, UL94V-0  
TERMINALS - HIGH PERFORMANCE COPPER ALLOY
  2. FINISH: 30μN MIN GOLD IN CONTACT AREA, SELECTIVE TIN ON PCB TAILS, NICKEL OVERALL.
  3. REFER TO MOLEX PRODUCT SPEC PS-76060-999 FOR PERFORMANCE SPECIFICATIONS AND ADDITIONAL PCB INFORMATION.
  4. EACH SIGNAL WAFER CONTAINS 2 COLUMNS OF TERMINALS.
  5. PRODUCT IS PACKAGED PER PK-70873-589.
  6. THIS PART CONFORMS TO CLASS B REQUIREMENTS OF COSMETIC SPEC PS-45499-002.
  7. REFER TO MOLEX SALES DRAWING SD-76145-002 FOR THE MATING HEADERS AND SD-76560-002 FOR THE MATING RAM CONNECTORS.
  8. REFER TO MOLEX ROUTING GUIDE AS-76060-990 FOR ANTI PAD AND ROUTING RECOMMENDATIONS.
  9. PART NUMBER 76150-3020 SHOWN ON DRAWING. KEYING FEATURES WILL CHANGE WITH COLUMN SIZE.
  10. MINIMUM BOARD THICKNESS IS 1.00 mm FOR COMPLIANT PIN FUNCTIONALITY.
  11. WHEN USING MOLEX SUPPLIED #2-32 SCREW 73726-0000 (9.50mm ±0.38 THREADABLE SCREW LENGTH), THE MAXIMUM BOARD THICKNESS IS 4.4mm.
  12. MARKING: LOCATED APPROXIMATELY AS SHOWN. PART NUMBER AND DATE CODE.

DAUGHTERCARD HOLE PATTERN (CONNECTOR SIDE)

ADD LASER MARK INFO EC NO: UCP2016-2564 DRWNG: MARIARA 2015/07/29 CHKD: TELLO APPR: TELLO H1	QUALITY SYMBOLS ∇=0 ∇=0 ∇=0	GENERAL TOLERANCES (UNLESS SPECIFIED) mm INCH		DIMENSION STYLE MM ONLY		SCALE 3:1	DESIGN UNITS METRIC	THIRD ANGLE PROJECTION	
		4 PLACES ± --- ± --- 3 PLACES ± --- ± --- 2 PLACES ± 0.13 ± --- 1 PLACE ± 0.25 ± ---	DRAWN BY JLAURX	DATE 2008/03/12	TITLE IMPACT 100 OHM DC 6 PAIR SIGNAL MODULE GUIDE LEFT SALES DWG		MOLEX INCORPORATED	SHEET NO. 1 OF 2	
		ANGULAR ± 1/2°	CHECKED BY TELLO	DATE 2008/03/12	APPROVED BY JLAURX				DATE 2010/11/04
		DRAFT WHERE APPLICABLE MUST REMAIN WITHIN DIMENSIONS	MATERIAL NO. SEE CHART		DOCUMENT NO. SD-76150-002				
THIS DRAWING CONTAINS INFORMATION THAT IS PROPRIETARY TO MOLEX INCORPORATED AND SHOULD NOT BE USED WITHOUT WRITTEN PERMISSION									

MATERIAL NUMBER	# OF COLUMNS	# OF DIFF PAIR	DIM 'A' MAX	DIM 'B'	PTH $\phi$
76150-***10	10	60	26.60	17.10	0.46 $\pm 0.05$
76150-***14	14	84	34.20	24.70	
76150-***16	16	96	38.00	28.50	
76150-***20	10	60	26.60	17.10	0.39 $\pm 0.05$
76150-***24	14	84	34.20	24.70	
76150-***26	16	96	38.00	28.50	

76150-\*\*\* \*\*

3 = LEFT GUIDED LEAD-FREE      # OF COLUMNS  
 10 = 10 COL 0.46 PTH  
 14 = 14 COL 0.46 PTH  
 16 = 16 COL 0.46 PTH  
 20 = 10 COL 0.39 PTH  
 24 = 14 COL 0.39 PTH  
 26 = 16 COL 0.39 PTH

POLARIZATION KEY ORIENTATION  
 0 = NO KEY  
 1 = A      5 = E  
 2 = B      6 = F  
 3 = C      7 = G  
 4 = D      8 = H

SEE SHEET 1 EC NO: UCP2016-2564 DRAWN BY: DRW:DWIARIARA CHKD: TELO APPR: TELO 2015/07/29 2016/01/06	QUALITY SYMBOLS	GENERAL TOLERANCES (UNLESS SPECIFIED)	DIMENSION STYLE	SCALE	DESIGN UNITS	THIRD ANGLE PROJECTION
		mm    INCH 4 PLACES $\pm$ --- $\pm$ --- 3 PLACES $\pm$ --- $\pm$ --- 2 PLACES $\pm 0.13$ $\pm$ --- 1 PLACE $\pm 0.25$ $\pm$ --- 0 PLACE $\pm$ $\pm$	MM ONLY	3:1	METRIC	
	DESCRIPTION	ANGULAR $\pm 1/2^\circ$	DRAWN BY	TITLE		
	REV	DRAFT WHERE APPLICABLE MUST REMAIN WITHIN DIMENSIONS	DATE	IMPACT 100 OHM DC 6 PAIR SIGNAL MODULE GUIDE LEFT SALES DWG		
			JLAURX			
			TELO			
			JLAURX	SD-76150-002		
				SHEET NO. 2 OF 2		
				THIS DRAWING CONTAINS INFORMATION THAT IS PROPRIETARY TO MOLEX INCORPORATED AND SHOULD NOT BE USED WITHOUT WRITTEN PERMISSION		