

Excellent Integrated System Limited

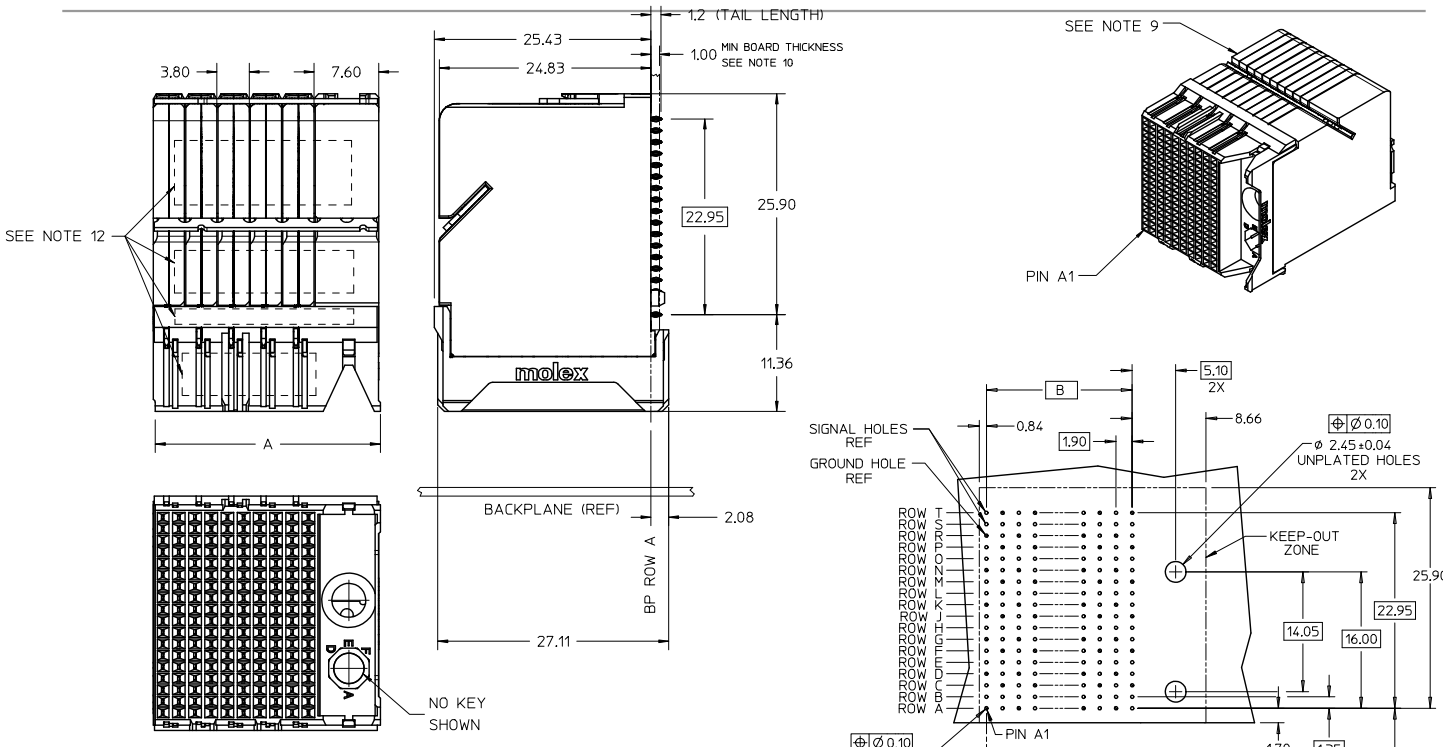
Stocking Distributor

Click to view price, real time Inventory, Delivery & Lifecycle Information:

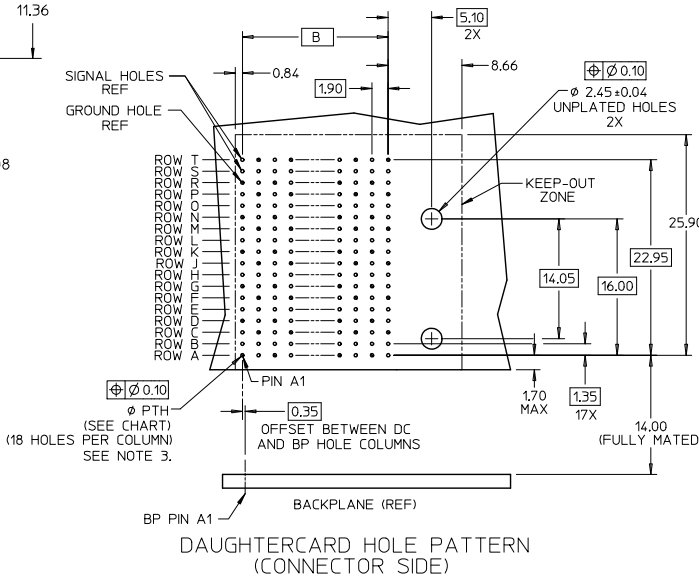
[Molex Connector Corporation](#)
[0761504020](#)

For any questions, you can email us directly:

sales@integrated-circuit.com

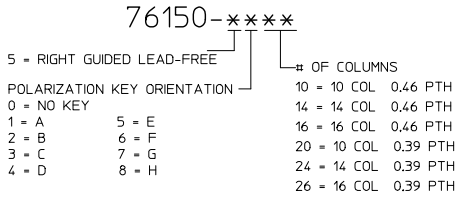


- NOTES:
1. MATERIALS: HOUSING - LIQUID CRYSTAL POLYMER (LCP), GLASS-FILLED, UL94V-0
TERMINALS - HIGH PERFORMANCE COPPER ALLOY
 2. FINISH: 30μM MIN GOLD IN CONTACT AREA, SELECTIVE TIN ON PCB TAILS, NICKEL OVERALL.
 3. REFER TO MOLEX PRODUCT SPEC PS-76060-999 FOR PERFORMANCE SPECIFICATIONS AND ADDITIONAL PCB INFORMATION.
 4. EACH SIGNAL WAFER CONTAINS 2 COLUMNS OF TERMINALS.
 5. PRODUCT IS PACKAGED PER PK-70873-589.
 6. THIS PART CONFORMS TO CLASS B REQUIREMENTS OF COSMETIC SPEC PS-45499-002.
 7. REFER TO MOLEX SALES DRAWING SD-76145-003 FOR THE MATING HEADERS AND SD-76560-004 FOR THE MATING RAM CONNECTORS.
 8. REFER TO MOLEX PCB ROUTING GUIDE AS-76060-990 FOR ANTIPAD AND ROUTING RECOMMENDATIONS.
 9. PART NUMBER 76150-5120 SHOWN ON DRAWING. KEY FEATURES WILL CHANGE WITH COLUMN SIZE
 10. MINIMUM BOARD THICKNESS IS 1.00 mm FOR COMPLIANT PIN FUNCTIONALITY.
 11. WHEN USING MOLEX SUPPLIED #2-32 SCREW 73726-0000 (9.50mm ±0.38 THREADABLE SCREW LENGTH), THE MAXIMUM BOARD THICKNESS IS 4.4mm.
 12. MARKING: LOCATED APPROXIMATELY AS SHOWN. PART NUMBER AND DATE CODE.



ADD LASER MARK INFO EC NO: UCP2016-2564 DRWING: VARIARA 2015/07/29 CHKD: TELLO APPR: TELLO 2016/01/06	QUALITY SYMBOLS ▽=0 ▽=0 ▽=0	GENERAL TOLERANCES (UNLESS SPECIFIED)		DIMENSION STYLE MM ONLY		SCALE 3:1	DESIGN UNITS METRIC	THIRD ANGLE PROJECTION			
		4 PLACES ± --- ± ---	3 PLACES ± --- ± ---	DRAWN BY JLAURX	DATE 2008/03/12	TITLE IMPACT 100 OHM DC 6 PAIR SIGNAL MODULE GUIDE RIGHT SALES DWG					
		2 PLACES ± 0.13 ± ---	1 PLACE ± 0.25 ± ---	CHECKED BY TELLO	DATE 2008/03/12	MOLEX INCORPORATED					
		ANGULAR ± 1/2°		APPROVED BY JLAURX	DATE 2010/11/04	MATERIAL NO. SEE CHART		DOCUMENT NO. SD-76150-004	SHEET NO. 1 OF 2		
DRAFT WHERE APPLICABLE MUST REMAIN WITHIN DIMENSIONS		SIZE C		THIS DRAWING CONTAINS INFORMATION THAT IS PROPRIETARY TO MOLEX INCORPORATED AND SHOULD NOT BE USED WITHOUT WRITTEN PERMISSION							

MATERIAL NUMBER	# OF COLUMNS	# OF DIFF PAIR	DIM 'A' MAX	DIM 'B'	PTHØ
76150-***10	10	60	26.60	17.10	0.46 +0.05
76150-***14	14	84	34.20	24.70	
76150-***16	16	96	38.00	28.50	0.39 +0.05
76150-***20	10	60	26.60	17.10	
76150-***24	14	84	34.20	24.70	
76150-***26	16	96	38.00	28.50	



SEE SHEET 1 EC NO: UCP2016-2564 DRW: DWARIARA 2015/10/29 CHKD: TELLO APPR: TELLO 2016/01/06	QUALITY SYMBOLS	GENERAL TOLERANCES (UNLESS SPECIFIED)	DIMENSION STYLE	SCALE	DESIGN UNITS	THIRD ANGLE PROJECTION	
	▽=0	mm INCH	MM ONLY	4:1	METRIC		
	▽=0	4 PLACES ± --- ± ---	DRAWN BY	DATE	TITLE IMPACT 100 OHM DC 6 PAIR SIGNAL MODULE GUIDE RIGHT SALES DWG molex		
	▽=0	3 PLACES ± --- ± ---	CHECKED BY	DATE			
▽=0	2 PLACES ± 0.13 ± ---	TELO	2008/03/12				
▽=0	1 PLACE ± 0.25 ± ---	APPROVED BY	DATE				
	0 PLACE ± ±	JLAURX	2010/11/04	MATERIAL NO.	DOCUMENT NO.	SHEET NO.	
	ANGULAR ±1/2°	SEE CHART	SD-76150-004	2 OF 2			
	DRAFT WHERE APPLICABLE MUST REMAIN WITHIN DIMENSIONS	THIS DRAWING CONTAINS INFORMATION THAT IS PROPRIETARY TO MOLEX INCORPORATED AND SHOULD NOT BE USED WITHOUT WRITTEN PERMISSION					