

## Excellent Integrated System Limited

Stocking Distributor

Click to view price, real time Inventory, Delivery & Lifecycle Information:

[Molex Connector Corporation](#)  
[0761653807](#)

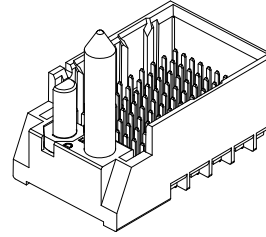
For any questions, you can email us directly:

[sales@integrated-circuit.com](mailto:sales@integrated-circuit.com)



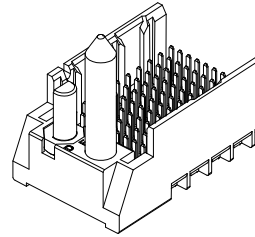
### PART NUMBER TABLE

| MATERIAL NUMBER | # OF COLUMNS | # OF DIFF PAIR | DIM 'A' | DIM 'B' | GUIDE LEFT<br>END WALL<br>OPTION |
|-----------------|--------------|----------------|---------|---------|----------------------------------|
| 76165-*3**      | 6            | 18             | 19.3    | 9.50    |                                  |
| 76165-*8**      | 8            | 24             | 23.1    | 13.30   |                                  |
| 76165-*1**      | 10           | 30             | 26.9    | 17.10   |                                  |
| 76165-*6**      | 16           | 48             | 38.3    | 28.50   |                                  |



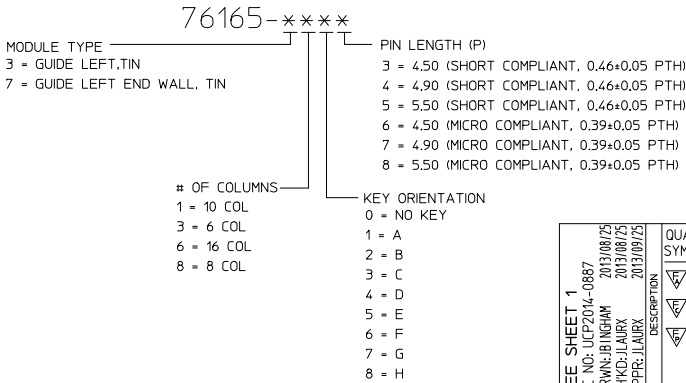
GUIDE LEFT  
END WALL  
OPTION

| MATERIAL NUMBER | # OF COLUMNS | # OF DIFF PAIR | DIM 'A' | DIM 'B' | GUIDE LEFT<br>OPEN WALL<br>OPTION |
|-----------------|--------------|----------------|---------|---------|-----------------------------------|
| 76165-*3**      | 6            | 18             | 17.9    | 9.50    |                                   |
| 76165-*8**      | 8            | 24             | 21.7    | 13.30   |                                   |
| 76165-*1**      | 10           | 30             | 25.5    | 17.10   |                                   |
| 76165-*6**      | 16           | 48             | 36.9    | 28.50   |                                   |



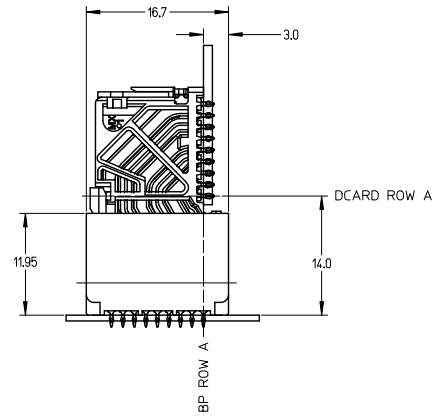
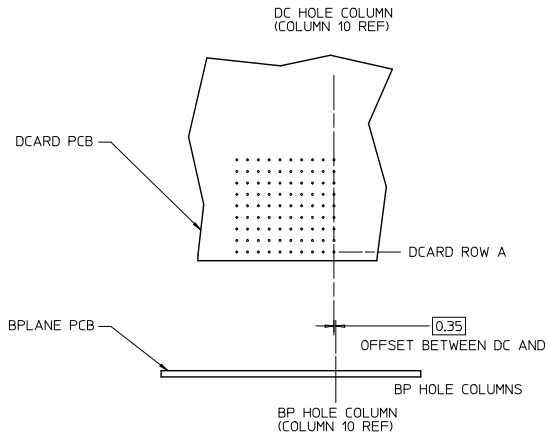
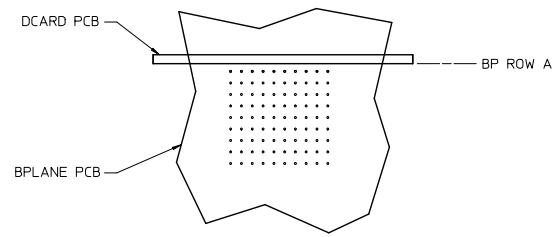
GUIDE LEFT  
OPEN WALL  
OPTION

### PART NUMBER LOGIC



|   |   |  |   |                           |  |                              |                     |
|---|---|--|---|---------------------------|--|------------------------------|---------------------|
| SEE SHEET 1<br>EC NO: UCP2014-0887<br>DRAWN: B INGHAM 2013/08/29<br>CHKD: JLAURX 2013/08/29<br>APPR: JLAURX 2013/09/25<br>DESCRIPTION<br>REV H1 | QUALITY SYMBOLS   | GENERAL TOLERANCES (UNLESS SPECIFIED)  | DIMENSION STYLE<br>MM ONLY  | SCALE<br>3:1              | DESIGN UNITS<br>METRIC                                       | THIRD ANGLE PROJECTION       |                     |
|   | 4 PLACES ± --- ± ---<br>3 PLACES ± --- ± ---<br>2 PLACES ± 0.13 ± ---<br>1 PLACE ± 0.25 ± ---<br>0 PLACE ± ±                  | mm INCH<br>DRAWN BY MSANDBERG DATE 2007/06/18<br>CHECKED BY JLAURX DATE 2007/06/18<br>APPROVED BY JLAURX DATE 2010/10/15 | ANGULAR ±1/2°<br>DRAFT WHERE APPLICABLE MUST REMAIN WITHIN DIMENSIONS | MATERIAL NO.<br>SEE TABLE | TITLE<br>IMPACT BP 3 PAIR LEFT GUIDED ASSEMBLY SALES DRAWING | DOCUMENT NO.<br>SD-76165-002 | SHEET NO.<br>2 OF 3 |
|   | THIS DRAWING CONTAINS INFORMATION THAT IS PROPRIETARY TO MOLEX INCORPORATED AND SHOULD NOT BE USED WITHOUT WRITTEN PERMISSION |  |   |                           |  |                              |                     |
|   | THIS DRAWING CONTAINS INFORMATION THAT IS PROPRIETARY TO MOLEX INCORPORATED AND SHOULD NOT BE USED WITHOUT WRITTEN PERMISSION |  |   |                           |  |                              |                     |

**IMPACT 3 PAIR  
BOARD RELATIONSHIPS**



|  |                                      |  |  |                                   |                    |  |                        |                              |  |
|--|--------------------------------------|--|--|-----------------------------------|--------------------|--|------------------------|------------------------------|--|
| SEE SHEET 1<br>EC NO: UCPE2014-0887<br>DRAWN: BINGHAM 2013/08/29<br>CHKD: LAURX 2013/08/29<br>APPR: LAURX 2013/09/23 | QUALITY SYMBOLS<br>✓=0<br>△=0<br>▽=0 | GENERAL TOLERANCES (UNLESS SPECIFIED)  |  | DIMENSION STYLE<br><b>MM ONLY</b> |                    | SCALE<br>2:1   | DESIGN UNITS<br>METRIC | THIRD ANGLE PROJECTION       |  |
|  |                                      | 4 PLACES ± --- ± ---<br>3 PLACES ± --- ± ---<br>2 PLACES ± 0.13 ± ---<br>1 PLACE ± 0.25 ± ---<br>0 PLACE ± ± | mm INCH<br>--- ---<br>--- ---<br>--- ---<br>--- ---<br>--- --- | DRAWN BY<br>MSANDBERG             | DATE<br>2007/06/18 | TITLE<br>IMPACT BP 3 PAIR<br>LEFT GUIDED ASSEMBLY<br>SALES DRAWING   |                        | DOCUMENT NO.<br>SD-76165-002 |  |
| H1   | DESCRIPTION<br>REV                   | ANGULAR ±1/2°<br>DRAFT WHERE APPLICABLE<br>MUST REMAIN<br>WITHIN DIMENSIONS                                  |  | MATERIAL NO.<br>SEE TABLE         |                    | THIS DRAWING CONTAINS INFORMATION THAT IS PROPRIETARY TO MOLEX<br>INCORPORATED AND SHOULD NOT BE USED WITHOUT WRITTEN PERMISSION |                        | molex                        |  |