

Excellent Integrated System Limited

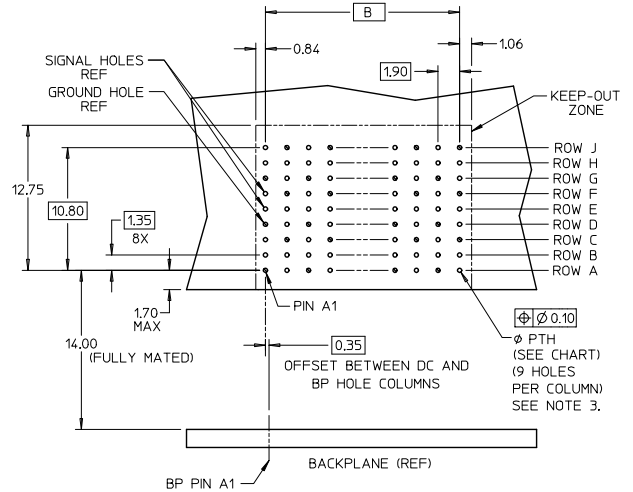
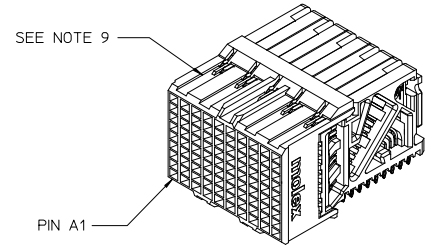
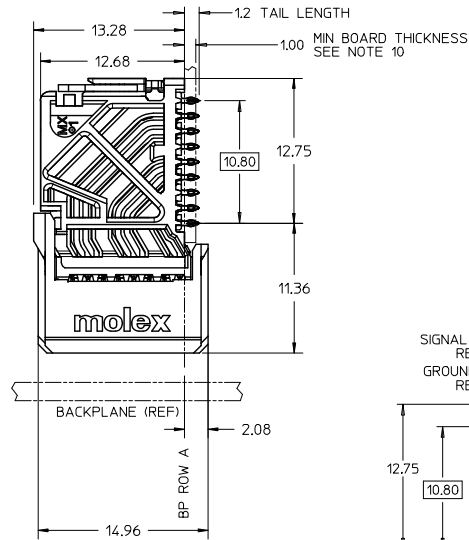
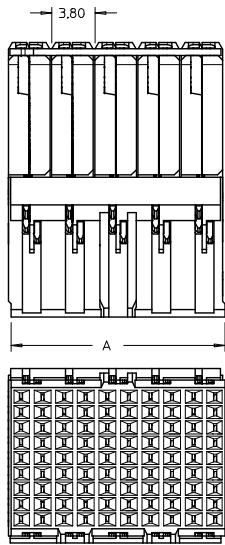
Stocking Distributor

Click to view price, real time Inventory, Delivery & Lifecycle Information:

[Molex Connector Corporation](#)
[0761701020](#)

For any questions, you can email us directly:

sales@integrated-circuit.com



DAUGHTERCARD HOLE PATTERN (CONNECTOR SIDE)

- NOTES:
1. MATERIALS: HOUSING - LIQUID CRYSTAL POLYMER (LCP), GLASS-FILLED, UL94V-0
TERMINALS - HIGH PERFORMANCE COPPER ALLOY
 2. FINISH: 30μM SELECTIVE GOLD IN CONTACT AREA, SELECTIVE TIN
ON PCB TAILS, NICKEL OVERALL.
 3. REFER TO MOLEX PRODUCT SPEC PS-76060-999 FOR PERFORMANCE SPECIFICATIONS
AND ADDITIONAL PCB INFORMATION.
 4. EACH SIGNAL WAFER CONTAINS 2 COLUMNS OF TERMINALS.
 5. PRODUCT IS PACKAGED PER PK-70873-591.
 6. THIS PART CONFORMS TO CLASS B REQUIREMENTS OF COSMETIC SPEC PS-45499-002.
 7. REFER TO MOLEX SALES DRAWING SD-76165-001 FOR THE MATING HEADERS AND
SD-76410-001 FOR THE MATING RAM CONNECTORS.
 8. REFER TO MOLEX PCB ROUTING GUIDE AS-76060-990 FOR ANTI PAD AND ROUTING
RECOMMENDATIONS.
 9. PART NUMBER 76170-1020 SHOWN ON DRAWING. KEYING FEATURES WILL CHANGE
WITH COLUMN SIZE.
 10. MINIMUM BOARD THICKNESS IS 1.00 mm FOR COMPLIANT PIN FUNCTIONALITY.

STANDARDIZATION EC NO: UCP/2015-5285 DRAWN: JUPESKY 2013/06/11 CHKD: TELLO APPR: TELLO	DESCRIPTION 2013/07/18	QUALITY SYMBOLS ▽=0 ▽=0 ▽=0	GENERAL TOLERANCES (UNLESS SPECIFIED)		DIMENSION STYLE MM ONLY		SCALE 4:1	DESIGN UNITS METRIC	THIRD ANGLE PROJECTION
			mm	INCH	DRAWN BY JLAURX	DATE 2008/01/29	TITLE IMPACT 100 OHM DC 3 PAIR SIGNAL MODULE UNGUIDED SALES DRAWING		
E1	REV		4 PLACES ±	±	CHECKED BY TELO	DATE 2008/01/29	molex		SHEET NO. 1 OF 2
			3 PLACES ±	±	APPROVED BY JLAURX	DATE 2008/01/29			
DRAFT WHERE APPLICABLE MUST REMAIN WITHIN DIMENSIONS			ANGULAR ±1/2°		MATERIAL NO. SEE CHART		DOCUMENT NO. SD-76170-001		
THIS DRAWING CONTAINS INFORMATION THAT IS PROPRIETARY TO MOLEX INCORPORATED AND SHOULD NOT BE USED WITHOUT WRITTEN PERMISSION									

MATERIAL NUMBER	# OF COLUMNS	# OF DIFF PAIR	DIM 'A' MAX	DIM 'B'	PTH ϕ
76170-*006	6	18	11.40	9.50	0.46 ±0.05
76170-*008	8	24	15.20	13.30	
76170-*010	10	30	19.00	17.10	
76170-*016	16	48	30.40	28.50	0.39 ±0.05
76170-*036	6	18	11.40	9.50	
76170-*038	8	24	15.20	13.30	
76170-*020	10	30	19.00	17.10	
76170-*026	16	48	30.40	28.50	

76170-*0**

1 = OPEN LEAD-FREE

OF COLUMNS

- 06 = 6 COL 0.46 PTH
- 08 = 8 COL 0.46 PTH
- 10 = 10 COL 0.46 PTH
- 16 = 16 COL 0.46 PTH
- 20 = 10 COL 0.39 PTH
- 26 = 16 COL 0.39 PTH
- 36 = 6 COL 0.39 PTH
- 38 = 8 COL 0.39 PTH

SEE SHEET 1 EC NO: UCP2019-5285 DRAWN: JUPESKY 2013/06/11 CHKD: APPR: TELO 2013/07/18 REV	QUALITY SYMBOLS	GENERAL TOLERANCES (UNLESS SPECIFIED)	DIMENSION STYLE	SCALE	DESIGN UNITS	THIRD ANGLE PROJECTION	
	▽=0	mm INCH	MM ONLY	4:1	METRIC		
	▽=0	4 PLACES ± --- ± ---	DRAWN BY	DATE	TITLE IMPACT 100 OHM DC 3 PAIR SIGNAL MODULE UNGUIDED SALES DRAWING molex MATERIAL NO. SD-76170-001 DOCUMENT NO. SHEET NO. 2 OF 2		
	▽=0	3 PLACES ± --- ± ---	CHECKED BY	DATE			
▽=0	2 PLACES ± 0.13 ± ---	TELO	2008/01/29				
▽=0	1 PLACE ± 0.25 ± ---	APPROVED BY	DATE				
	0 PLACE ± ±	JLAURX	2008/01/29				
ANGULAR ±1/2°		SEE CHART					
DRAFT WHERE APPLICABLE MUST REMAIN WITHIN DIMENSIONS		THIS DRAWING CONTAINS INFORMATION THAT IS PROPRIETARY TO MOLEX INCORPORATED AND SHOULD NOT BE USED WITHOUT WRITTEN PERMISSION					