

Excellent Integrated System Limited

Stocking Distributor

Click to view price, real time Inventory, Delivery & Lifecycle Information:

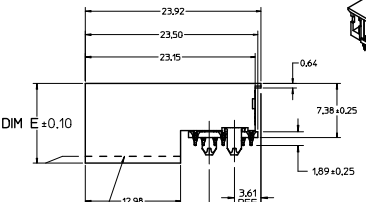
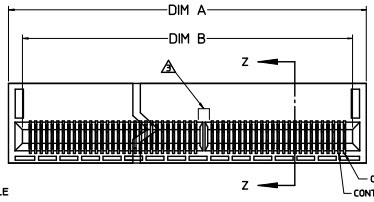
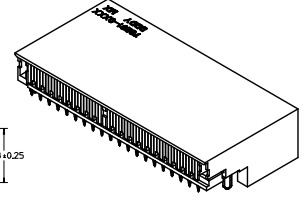
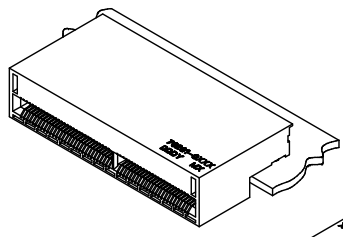
[Molex Connector Corporation](#)
[0762910038](#)

For any questions, you can email us directly:
sales@integrated-circuit.com

PART NUMBER	TN	STATUS	OKTS	DM A	DM B	DM C	DM D	DM E	POWER POS.	DM E
76291008	76291008	NOT TOOLED	8	8.19	4.40	5.65	4.25	-	-	10.84
76291014	76291014	NOT TOOLED	14	10.44	6.65	7.90	6.50	-	-	10.84
76291020	76291020	NOT TOOLED	20	12.69	8.90	10.15	8.75	-	-	10.84
76291026	76291026	NOT TOOLED	26	14.94	11.15	12.40	11.00	-	-	10.84
76291032	76291032	NOT TOOLED	32	17.19	13.40	14.65	13.25	-	-	10.84
76291038	76291038	NOT TOOLED	38	19.44	15.65	16.90	15.50	-	-	10.84
76291044	76291044	NOT TOOLED	44	21.69	17.90	19.15	17.75	-	-	10.84
76291050	76291050	NOT TOOLED	50	23.94	20.15	21.40	20.00	-	-	10.84
76291056	76291056	NOT TOOLED	56	26.19	22.40	23.65	22.25	-	-	10.84
76291062	76291062	NOT TOOLED	62	28.44	24.65	25.90	24.50	-	-	10.84
76291068	76291068	NOT TOOLED	68	30.69	26.90	28.15	26.75	-	-	10.84
76291074	76291074	NOT TOOLED	74	32.94	29.15	30.40	29.00	-	-	10.84
76291080	76291080	NOT TOOLED	80	35.19	31.40	32.65	31.25	-	-	10.84
76291086	76291086	NOT TOOLED	86	37.44	33.65	34.90	33.50	-	-	10.84
76291092	76291092	NOT TOOLED	92	39.69	35.90	37.15	35.75	-	-	10.84
76291098	76291098	NOT TOOLED	98	41.94	38.15	39.40	38.00	-	-	10.84
76291104	76291104	NOT TOOLED	104	44.19	40.40	41.65	40.25	-	-	10.84
76291110	76291110	NOT TOOLED	110	46.44	42.65	43.90	42.50	-	-	10.84
76291116	76291116	NOT TOOLED	116	48.69	44.90	46.15	44.75	-	-	10.84
76291122	76291122	NOT TOOLED	122	50.94	47.15	48.40	47.00	-	-	10.84
76291128	76291128	NOT TOOLED	128	53.19	49.40	50.65	49.25	-	-	10.84
76291134	76291134	NOT TOOLED	134	55.44	51.65	52.90	51.50	-	-	10.84
76291140	76291140	NOT TOOLED	140	57.69	53.90	55.15	53.75	-	-	10.84
76291146	76291146	NOT TOOLED	146	59.94	56.15	57.40	56.00	-	-	10.84
76291152	76291152	NOT TOOLED	152	62.19	58.40	59.65	58.25	-	-	10.84
76291158	76291158	NOT TOOLED	158	64.44	60.65	61.90	60.50	-	-	10.84
76291164	76291164	NOT TOOLED	164	66.69	62.90	64.15	62.75	-	-	10.84
76291170	76291170	NOT TOOLED	170	68.94	65.15	66.40	65.00	-	-	10.84
76291176	76291176	NOT TOOLED	176	71.19	67.40	68.65	67.25	-	-	10.84
76291182	76291182	NOT TOOLED	182	73.44	69.65	70.90	69.50	-	-	10.84
76291188	76291188	NOT TOOLED	188	75.69	71.90	73.15	71.75	-	-	10.84
76291194	76291194	NOT TOOLED	194	77.94	74.15	75.40	74.00	-	-	10.84
76291199	76291199	NOT TOOLED	199	80.19	76.40	77.65	76.25	-	-	10.84
76291202	76291202	NOT TOOLED	202	82.44	78.65	79.90	78.50	-	-	10.84
76291208	76291208	NOT TOOLED	208	84.69	80.90	82.15	80.75	-	-	10.84
76291214	76291214	NOT TOOLED	214	86.94	83.15	84.40	83.00	-	-	10.84
76291220	76291220	NOT TOOLED	220	89.19	85.40	86.65	85.25	-	-	10.84
76291226	76291226	NOT TOOLED	226	91.44	87.65	88.90	87.50	-	-	10.15
76291232	76291232	NOT TOOLED	232	93.69	89.90	91.15	89.75	-	-	10.84
76291238	76291238	NOT TOOLED	238	95.94	92.15	93.40	92.00	-	-	10.84
76291244	76291244	NOT TOOLED	244	98.19	94.40	95.65	94.25	-	-	10.84
76291250	76291250	NOT TOOLED	250	100.44	96.65	97.90	96.50	-	-	10.84

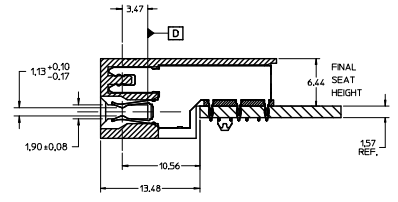
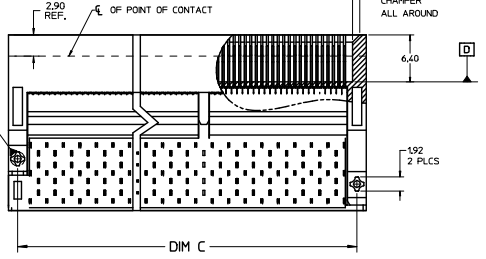


TOP VIEW (PARTIAL)



LOW PROFILE

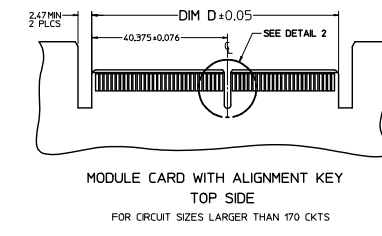
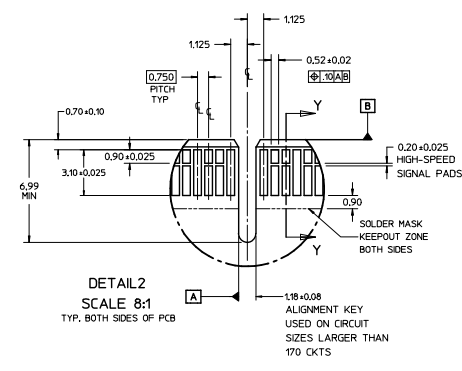
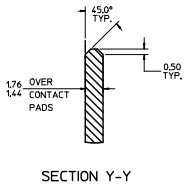
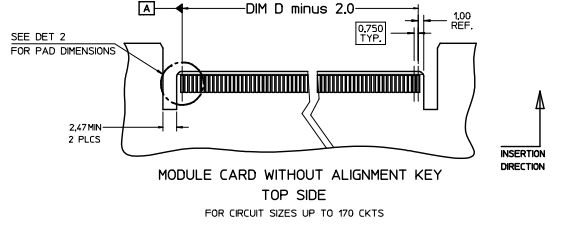
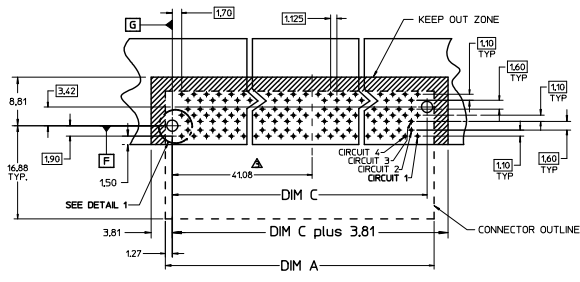
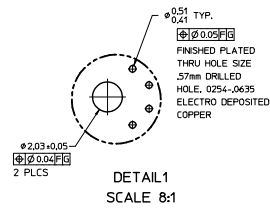
LOW PROFILE HOUSING



SECTION Z-Z

- NOTES:
- MATERIAL - CONNECTOR HOUSING - GLASS FILLED LCP, 94V-0, BLACK OVERMOLDING ON TERMINALS: GLASS FILLED LCP, 94V-0, BLACK TERMINALS: COPPER ALLOY, SPRING TEMPER
 - TERMINAL FINISH: CONTACT AREA: 75µm HARD GOLD OVER 3.8µm MN NICKEL. COMPLIANT AREA: 75-150µm TN OVER 75µm - 150µm NICKEL.
 - FOR CIRCUIT SIZES GREATER THAN 170, A CENTER ALIGNMENT KEY WILL BE USED.
 - REFER TO PS-76291-001 PRODUCT SPEC FOR ALL ELECTRICAL, MECHANICAL, AND ENVIRONMENTAL SPECIFICATIONS.
 - REFER TO PK-76291-001 FOR ALL PACKAGING SPECIFICATIONS.
 - REFER TO AS-76291-001 FOR BOARD APPLICATION INFORMATION.
 - MODULE BOARD CONTACT PAD PLATING TO BE 7µm MN HARD GOLD OVER 254µm MN NICKEL.
 - MODULE BOARD CONTACT PAD SURFACE ROUGHNESS NOT TO EXCEED R_a 0.2µm.
 - PART TO BE LASER MARKED WITH PART NUMBER, WHERE XXX IS THE CIRCUIT SIZE OR POWER WAFER OPTION, MANUFACTURING FACILITY, AND DATE CODE IN THE FORMAT OF: DAY OF THE YEAR AND LAST DIGIT OF THE YEAR: DDDY

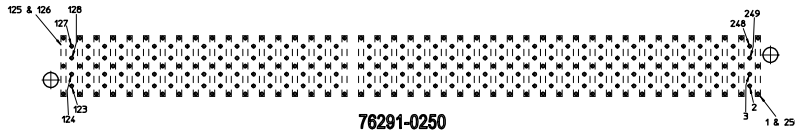
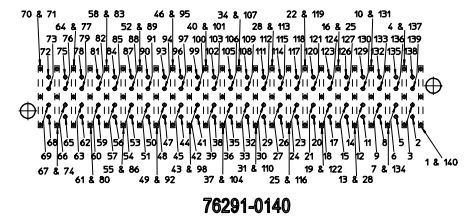
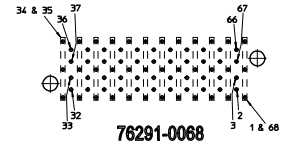
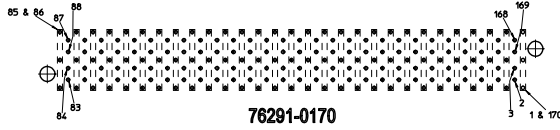
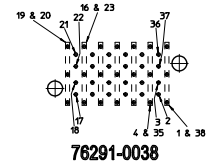
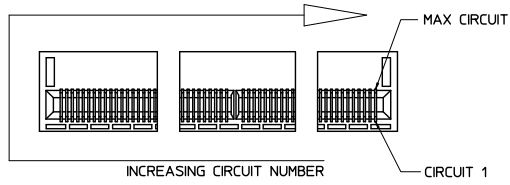
Rev: DIM E Low Profile EC: NCL: 076291-0038 R: DRAWING: 0003 EEL 2013/11/19 CHKD: JAPPE/MBANK/S APPR: MBANK/S 2013/05/12 MKD:	QUALITY SYMBOLS	GENERAL TOLERANCES (UNLESS SPECIFIED)	DIMENSION STYLE	SCALE	DESIGN UNITS	THIRD ANGLE PROJECTION	
	$\nabla=0$ $\nabla=0$ $\nabla=0$	4 PLACES ±--- ±--- 3 PLACES ±--- ±--- 2 PLACES ±0.13 ±--- 1 PLACE ±0.25 ±--- 0 PLACE ±--- ±---	MM ONLY	4:1	METRIC	DRAWN BY DATE HAVERY 2010/11/16 CHECKED BY DATE MBANK/S 2010/11/17 APPROVED BY DATE MBANK/S 2010/11/17	TITLE 75 COPLANAR CONNECTOR GENERAL SALES DRAWING
	DRAFT WHERE APPLICABLE MUST REMAIN WITHIN DIMENSIONS	ANGULAR ±1/2° SEE CHART THIS DRAWING CONTAINS INFORMATION THAT IS PROPRIETARY TO MOLEX INCORPORATED AND SHOULD NOT BE USED WITHOUT WRITTEN PERMISSION	MATERIAL NO. SD-76291-001	DOCUMENT NO.	SHEET NO. 1 OF 3		



SEE SHEET 1 EC NO. WFD204-4718 R'DRWN: SMO/EL 20/11/19 CHKD: MBANAKIS 28/10/19 APPR: MBANAKIS 28/10/19 ENG:	QUALITY SYMBOLS ∇=0 ∇=0 ∇=0	GENERAL TOLERANCES (UNLESS SPECIFIED) mm INCH 4 PLACES ± --- ± --- 3 PLACES ± --- ± --- 2 PLACES ± 0.13 ± --- 1 PLACE ± 0.25 ± --- 0 PLACE ± --- ± ---	DIMENSION STYLE MM ONLY	SCALE 4:1	DESIGN UNITS METRIC	THIRD ANGLE PROJECTION	
	DRAWN BY HAVERY	DATE 2010/11/16	CHECKED BY DATE	APPROVED BY MBANAKIS	DATE 2010/11/17	MATERIAL NO.	TITLE .75 COPLANAR CONNECTOR GENERAL SALES DRAWING
	DRAFT WHERE APPLICABLE MUST REMAIN WITHIN DIMENSIONS	SEE CHART	ANGLE ± 1/2°	SIZE THIS DRAWING CONTAINS INFORMATION THAT IS PROPRIETARY TO MOLEX INCORPORATED AND SHOULD NOT BE USED WITHOUT WRITTEN PERMISSION	DOCUMENT NO. SD-76291-001	SHEET NO. 2 OF 3	molex
	R:\frame_01\p_Alt.T Rev. 1 2010/09/11						

PCB PIN-OUT ASSIGNMENTS

(TOP SIDE OF BOARD SHOWN)



FRONT EDGE OF PCB

NOTES ON CIRCUIT DESIGNATIONS:

1. CIRCUIT 1 STARTS AT LOWER RIGHT HAND CORNER AND INCREASES TO THE LEFT ACROSS THE BOTTOM AND INCREASES TO THE RIGHT ACROSS THE TOP.
2. THERE IS NOT A 1:1 CORRESPONDENCE BETWEEN THE CIRCUIT NUMBER AND THE TAIL HOLE LOCATIONS. EACH GROUND HAS TWO CONTACTS AND THREE TAILS. THE BOXES AROUND THE THREE VERTICAL HOLES INDICATE THE UPPER AND LOWER GROUND CONTACTS SHARE THE THREE TAIL HOLE LOCATIONS.

SEE SHEET 1 SEC NO. 117204-4718 DRAWING NO. 076291-0038 EEL CHKD: [] APPR: MBANKAKI DATE: 2010/11/17	QUALITY SYMBOLS	GENERAL TOLERANCES (UNLESS SPECIFIED):	DIMENSION STYLE	SCALE	DESIGN UNITS	THIRD ANGLE PROJECTION
	▽=0	mm INCH	MM ONLY	4:1	METRIC	☉
	▽=0	4 PLACES ± --- ± ---	DRAWN BY	DATE	TITLE	
	▽=0	3 PLACES ± --- ± ---	HAVEY	2010/11/16	.75 COPLANAR CONNECTOR GENERAL SALES DRAWING	
	2 PLACES ± 0.13 ± ---	APPROVED BY	DATE	TITLE		
	1 PLACE ± 0.25 ± ---	MBANKAKI	2010/11/17	TITLE		
	0 PLACE ± --- ± ---	MATERIAL NO.	DATE	TITLE		
	ANGULAR ± 1/2°	SEE CHART		DOCUMENT NO.		
	DRAFT WHERE APPLICABLE MUST REMAIN WITHIN DIMENSIONS	SIZE		THIS DRAWING CONTAINS INFORMATION THAT IS PROPRIETARY TO MOLEX INCORPORATED AND SHOULD NOT BE USED WITHOUT WRITTEN PERMISSION		

molex

SD-76291-001

SHEET NO. 3 OF 3