

Excellent Integrated System Limited

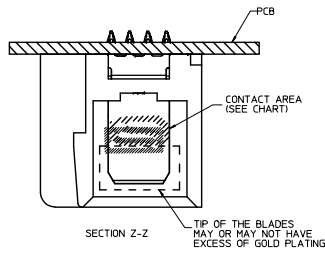
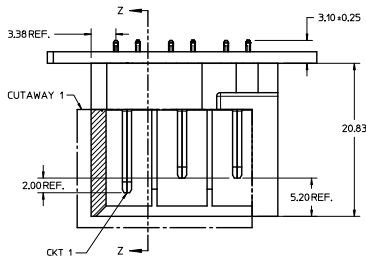
Stocking Distributor

Click to view price, real time Inventory, Delivery & Lifecycle Information:

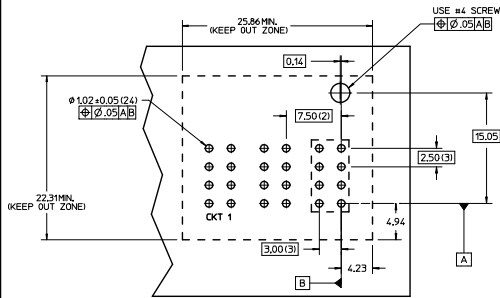
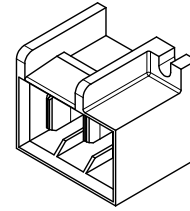
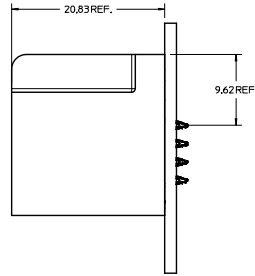
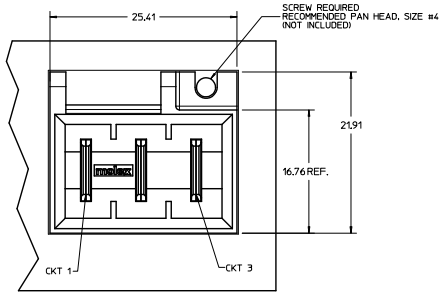
[Molex Connector Corporation](#)
[0765460004](#)

For any questions, you can email us directly:

sales@integrated-circuit.com



ITEM	MOLEX P/N	DESCRIPTION	PLATING SPEC:
1	76546-0004	3-CKT CONNECTOR TIN PLATING (CONTACT AREA)	0.000254 MATTE TIN OVERALL OVER 0.00127 NICKEL.
2	76546-0005	3-CKT CONNECTOR GOLD PLATING (CONTACT AREA ONLY)	0.000127 NICKEL OVERALL WITH 0.000254 MATTE TIN ON TAILS AND 0.000762 SELECTIVE GOLD ON CONTACT AREA.



NOTES:

1. MATERIAL:
-HOUSINGS: PBT 30% UL-94, V-0; COLOR BLACK
-TERMINALS: COPPER ALLOY
-PLATING: SEE CHART
2. PACKAGING: ASSEMBLIES TO BE TRAY PACKED PER PACKAGING SPEC PK-76546-xxxx
3. PRODUCT SPEC: PS-46436-100
4. APPLICATION SPEC: AS-46436-100
5. PRODUCT TO MEET RoHS REQUIREMENTS
6. ASSEMBLY MATES TO MOLEX RECEPTACLE HARNESS ASSEMBLY, P/N 46586-0003
7. MATES TO 46586-0003

RECOMMENDED PCB LAYOUT AND KEEP OUT ZONE

NEW P/N'S 76546-0004 & 0005 ECN NO. IJEP2014-0000 DRAWN: JUILLES 2013/08/08 CHECKED: SZCZOR 2013/08/08 APPROVED: SZCZOR 2013/08/08 (SEE COMMENTS)	QUALITY SYMBOLS	GENERAL TOLERANCES (UNLESS SPECIFIED)	DIMENSION STYLE	SCALE	DESIGN UNITS	THIRD ANGLE PROJECTION	
	$\nabla=0$ $\nabla=0$ $\nabla=0$	mm INCH 4 PLACES ±---+--- 3 PLACES ±---+--- 2 PLACES ±0.25 ±---+--- 1 PLACE ±0.25 ±---+--- 0 PLACE ±---+---	DRAWN BY DATE BKSTIC 2007/09/10 CHECKED BY DATE BKSTIC 2007/09/10 APPROVED BY DATE BKSTIC 2007/10/10	MM ONLY	4:1	METRIC	
	TITLE 3-CKT VERTICAL PLUG ASSY PRESS-FIT, TEN60 FAMILY, VERTICAL						
	MATERIAL NO. SD-76546-004 DOCUMENT NO. SD-76546-004 SHEET NO. 1 OF 1						