

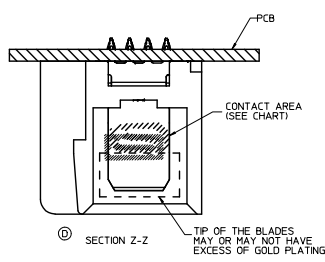
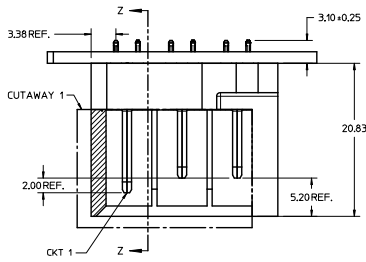
## Excellent Integrated System Limited

Stocking Distributor

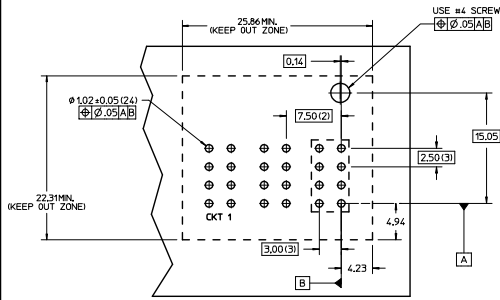
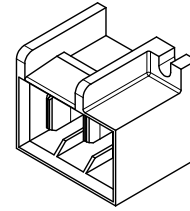
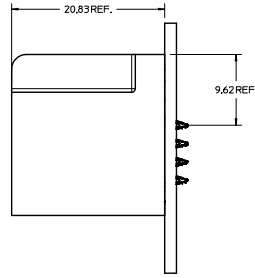
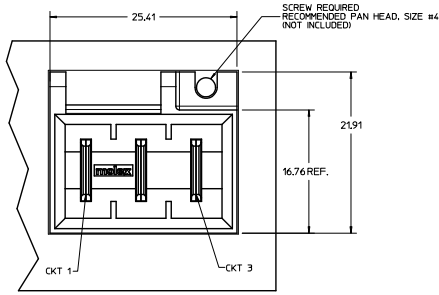
Click to view price, real time Inventory, Delivery & Lifecycle Information:

[Molex Connector Corporation](#)  
[0765460007](#)

For any questions, you can email us directly:  
[sales@integrated-circuit.com](mailto:sales@integrated-circuit.com)



ITEM	MOLEX P/N	DESCRIPTION	PLATING SPEC:
1	76546-0004	3-CKT CONNECTOR TIN PLATING (CONTACT AREA)	0.00254 MATTE TIN OVERALL, OVER 0.00127 NICKEL.
2	76546-0005	3-CKT CONNECTOR GOLD PLATING (CONTACT AREA ONLY)	0.000127 NICKEL OVERALL WITH 0.00254 MATTE TIN ON TAILS AND 0.000762 SELECTIVE GOLD ON CONTACT AREA.
3	76546-0006	3-CKT CONNECTOR TIN PLATING (CONTACT AREA)	0.00254 MATTE TIN OVERALL (PREVIOUSLY TIN/LEAD), OVER 0.00127 NICKEL.
4	76546-0007	3-CKT CONNECTOR GOLD PLATING (CONTACT AREA ONLY)	0.000127 NICKEL OVERALL WITH 0.00254 MATTE TIN ON TAILS AND (PREVIOUSLY TIN/LEAD) 0.000762 SELECTIVE GOLD ON CONTACT AREA.



NOTES:

- MATERIAL:  
-HOUSINGS: PBT 30% UL-94, V-0; COLOR BLACK  
-TERMINALS: COPPER ALLOY  
-PLATING: SEE CHART
- PACKAGING: ASSEMBLIES TO BE TRAY PACKED PER PACKAGING SPEC PK-76546-xxxx
- PRODUCT SPEC: PS-46436-100
- APPLICATION SPEC: AS-46436-100
- PRODUCT TO MEET RoHS REQUIREMENTS
- ASSEMBLY MATES TO MOLEX RECEPTACLE HARNESS ASSEMBLY, P/N 46586-1003
- MATES TO 46586-0003

RECOMMENDED PCB LAYOUT AND KEEP OUT ZONE

<b>LEADFREE CONVERSION:</b> ECN NO. IEP7013-2585 DRAWN BY: CHENWML/EC 2007/11/12 CHECKED BY: APPRESHILL/EC 2007/11/22 REV: 001	QUALITY SYMBOLS	GENERAL TOLERANCES (UNLESS SPECIFIED)	DIMENSION STYLE	SCALE	DESIGN UNITS	THIRD ANGLE PROJECTION	
	4 PLACES ±0.25 3 PLACES ±0.25 2 PLACES ±0.25 1 PLACE ±0.25 0 PLACE ±0.25	mm INCH ±0.25 ±0.010 ±0.25 ±0.010 ±0.25 ±0.010 ±0.25 ±0.010	DRAWN BY: BKOSTIC CHECKED BY: BKOSTIC APPROVED BY: BKOSTIC DATE: 2007/09/10 DATE: 2007/09/10 DATE: 2007/10/10	MM ONLY	4:1	METRIC	3-CKT VERTICAL PLUG ASSY PRESS-FIT, TEN60 FAMILY, VERTICAL
	ANGULAR ±1/2° DRAFT WHERE APPLICABLE MUST REMAIN WITHIN DIMENSIONS	MATERIAL NO. SEE TABLE SIZE D THIS DRAWING CONTAINS INFORMATION THAT IS PROPRIETARY TO MOLEX INCORPORATED AND SHOULD NOT BE USED WITHOUT WRITTEN PERMISSION	DOCUMENT NO. SD-76546-004				
							SHEET NO. 1 OF 1