

Excellent Integrated System Limited

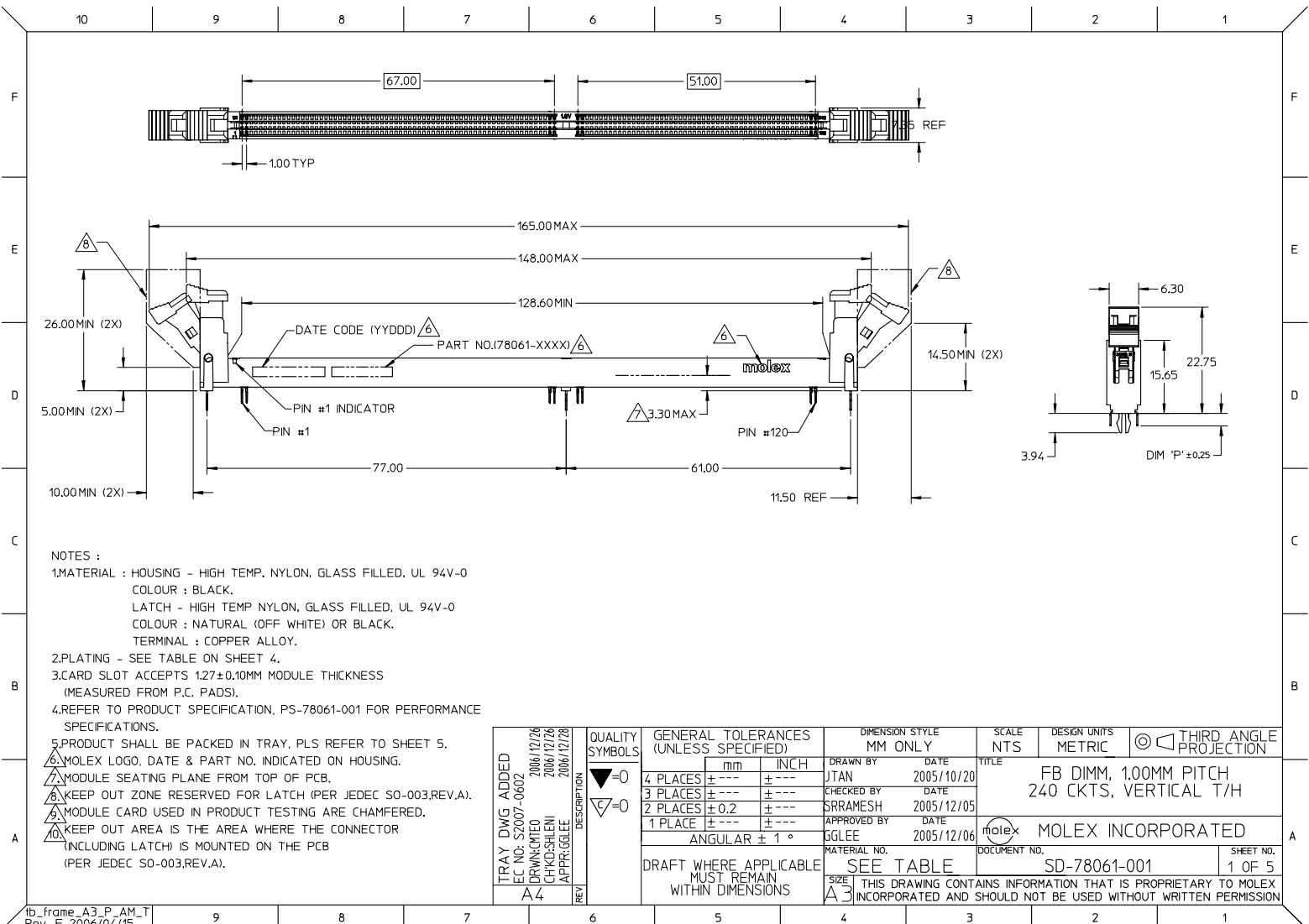
Stocking Distributor

Click to view price, real time Inventory, Delivery & Lifecycle Information:

[Molex Connector Corporation](#)
[0780610062](#)

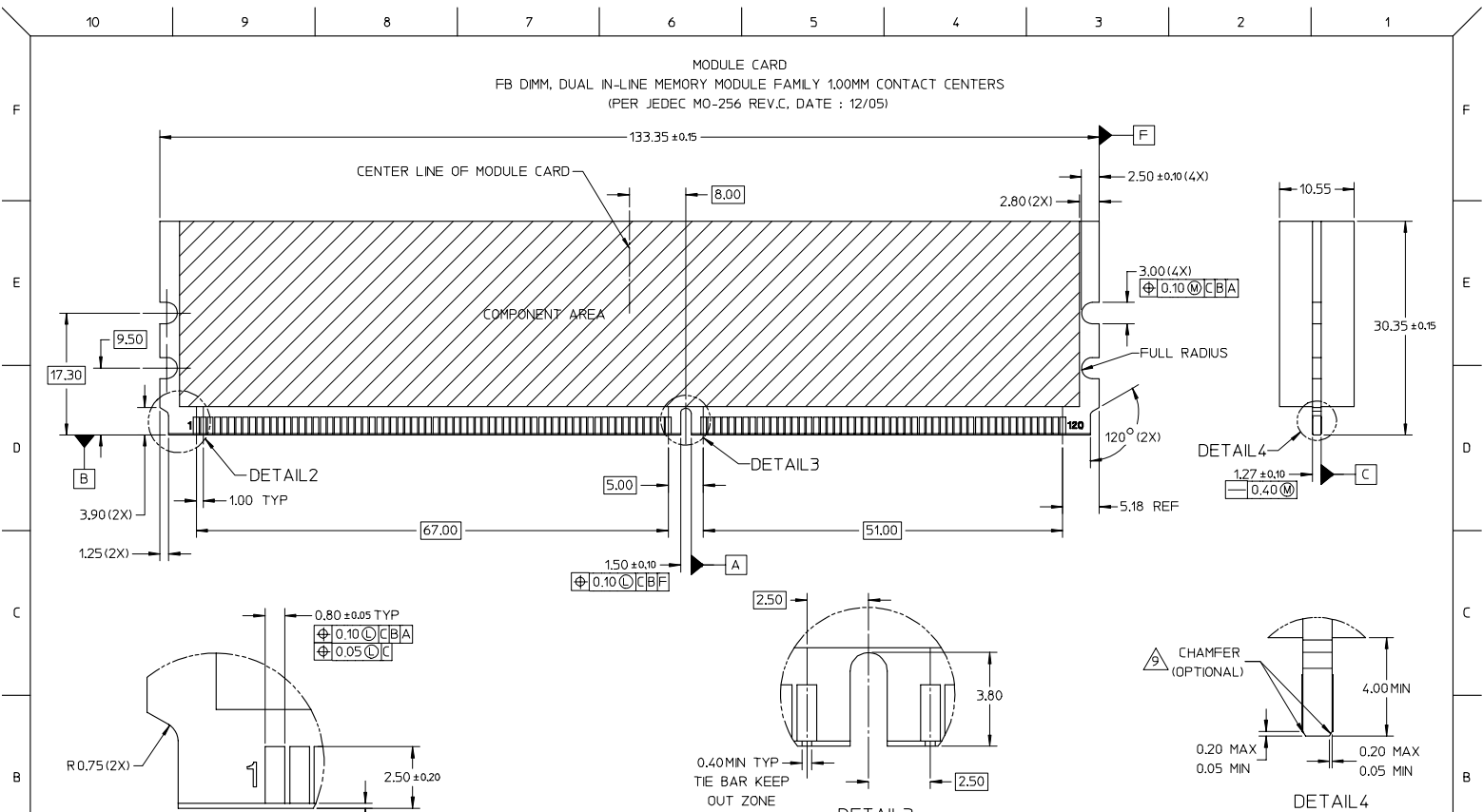
For any questions, you can email us directly:

sales@integrated-circuit.com

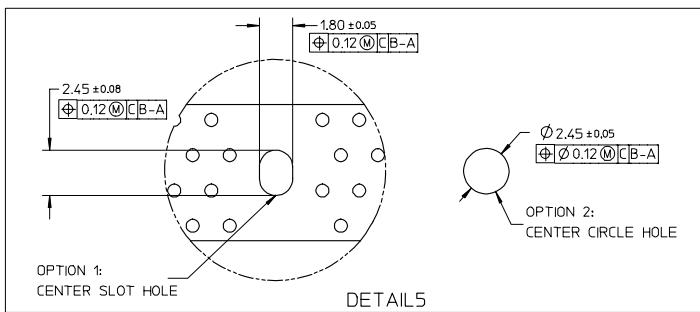
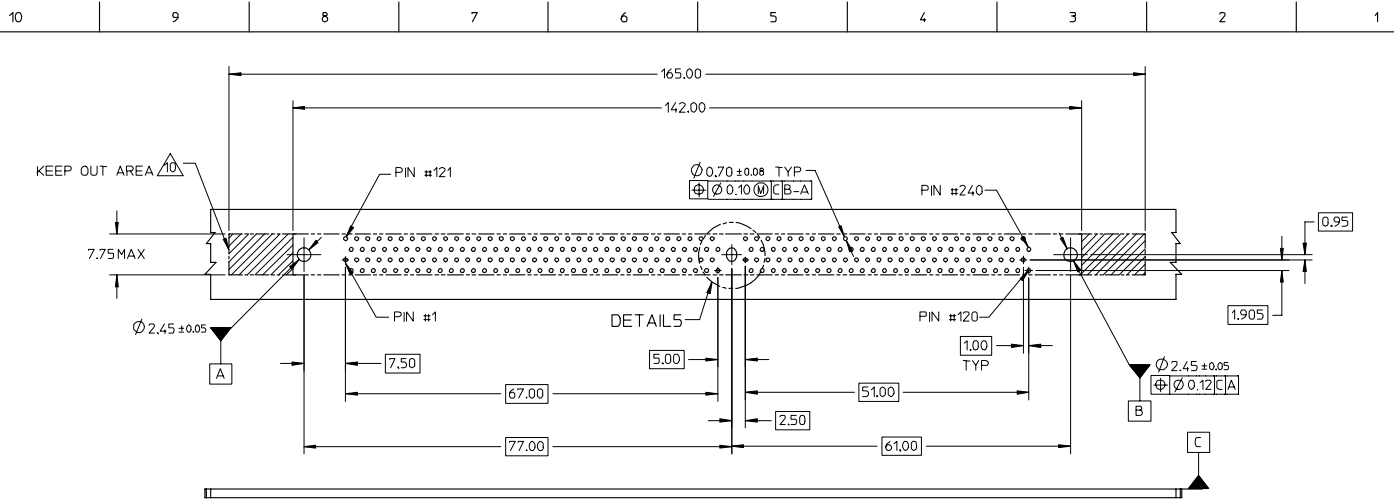


- NOTES :
- MATERIAL : HOUSING - HIGH TEMP. NYLON, GLASS FILLED, UL 94V-0
COLOUR : BLACK.
LATCH - HIGH TEMP NYLON, GLASS FILLED, UL 94V-0
COLOUR : NATURAL (OFF WHITE) OR BLACK.
TERMINAL : COPPER ALLOY.
 - PLATING - SEE TABLE ON SHEET 4.
 - CARD SLOT ACCEPTS 1.27±0.10MM MODULE THICKNESS (MEASURED FROM P.C. PADS).
 - REFER TO PRODUCT SPECIFICATION, PS-78061-001 FOR PERFORMANCE SPECIFICATIONS.
 - PRODUCT SHALL BE PACKED IN TRAY, PLS REFER TO SHEET 5.
- ⑧ MOLEX LOGO, DATE & PART NO. INDICATED ON HOUSING.
 - ⑦ MODULE SEATING PLANE FROM TOP OF PCB.
 - ⑥ KEEP OUT ZONE RESERVED FOR LATCH (PER JEDEC SO-003,REV.A).
 - ⑤ MODULE CARD USED IN PRODUCT TESTING ARE CHAMFERED.
 - ④ KEEP OUT AREA IS THE AREA WHERE THE CONNECTOR (INCLUDING LATCH) IS MOUNTED ON THE PCB (PER JEDEC SO-003,REV.A).

TRAY DWG ADDED EC NO: S2007-0602 DRAWN/CMO: 2006/12/26 CHKD/SHELEN: 2006/12/28 APPR/GGLEE: 2006/12/28	QUALITY SYMBOLS ▽=0 ▽=0	GENERAL TOLERANCES (UNLESS SPECIFIED)		DIMENSION STYLE MM ONLY		SCALE	DESIGN UNITS	THIRD ANGLE PROJECTION		
		4 PLACES ± --- ± ---	3 PLACES ± --- ± ---	2 PLACES ± 0.2 ± ---	1 PLACE ± --- ± ---	ANGULAR ± 1 °	NTS		METRIC	
		DRAFT WHERE APPLICABLE MUST REMAIN WITHIN DIMENSIONS		SEE TABLE	MATERIAL NO.		DOCUMENT NO.		SHEET NO.	
				SIZE A3	INCORPORATED AND SHOULD NOT BE USED WITHOUT WRITTEN PERMISSION				1 OF 5	



TRAY DWG ADDED EC NO: S2007-0602 DRAWN/CMO: 2006/12/26 CHKD/SHEIN: 2006/12/28 APPR/GGLEE: 2006/12/28 A4	DESCRIPTION REV 0 0	QUALITY SYMBOLS	GENERAL TOLERANCES (UNLESS SPECIFIED)		DIMENSION STYLE MM ONLY		SCALE NTS	DESIGN UNITS METRIC	THIRD ANGLE PROJECTION		
		▽=0	4 PLACES	±	---	mm	INCH	---	---	DRAWN BY: JTAN DATE: 2005/10/20	
		▽=0	3 PLACES	±	---	---	---	---	---	CHECKED BY: SRRAMESH DATE: 2005/12/05	
			2 PLACES	±	0.2	---	---	---	---	APPROVED BY: GGLEE DATE: 2005/12/06	
DRAFT WHERE APPLICABLE MUST REMAIN WITHIN DIMENSIONS			ANGULAR ± 1 °		MATERIAL NO. SEE TABLE		DOCUMENT NO. SD-78061-001		SHEET NO. 2 OF 5		



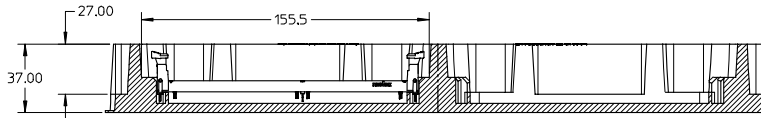
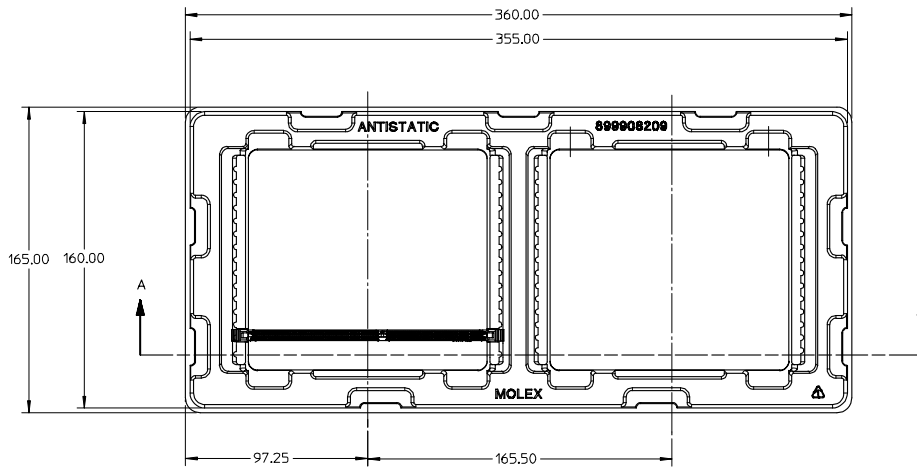
TRAY DWG ADDED EC NO: S2007-0602 DRAWN/CMO: 2006/12/26 CHKD/SHEIN: 2006/12/28 APPR/GGLEE: 2006/12/28 A4	QUALITY SYMBOLS ▽=0 ▽=0	GENERAL TOLERANCES (UNLESS SPECIFIED) <table border="1"> <thead> <tr> <th></th> <th>mm</th> <th>INCH</th> </tr> </thead> <tbody> <tr> <td>4 PLACES</td> <td>± 0.15</td> <td>± 0.006</td> </tr> <tr> <td>3 PLACES</td> <td>± 0.2</td> <td>± 0.008</td> </tr> <tr> <td>2 PLACES</td> <td>± 0.3</td> <td>± 0.012</td> </tr> <tr> <td>1 PLACE</td> <td>± 0.5</td> <td>± 0.020</td> </tr> </tbody> </table>		mm	INCH	4 PLACES	± 0.15	± 0.006	3 PLACES	± 0.2	± 0.008	2 PLACES	± 0.3	± 0.012	1 PLACE	± 0.5	± 0.020	DIMENSION STYLE MM ONLY	SCALE NTS	DESIGN UNITS METRIC	THIRD ANGLE PROJECTION
		mm	INCH																		
	4 PLACES	± 0.15	± 0.006																		
	3 PLACES	± 0.2	± 0.008																		
2 PLACES	± 0.3	± 0.012																			
1 PLACE	± 0.5	± 0.020																			
DRAWN BY: JTAN CHECKED BY: SRRAMESH APPROVED BY: GGLEE DATE: 2005/10/20 DATE: 2005/12/05 DATE: 2005/12/06	TITLE FB DIMM, 1.00MM PITCH 240 CKTS, VERTICAL T/H	MATERIAL NO. SEE TABLE	DOCUMENT NO. SD-78061-001	SHEET NO. 3 OF 5																	
DRAFT WHERE APPLICABLE MUST REMAIN WITHIN DIMENSIONS																					
THIS DRAWING CONTAINS INFORMATION THAT IS PROPRIETARY TO MOLEX INCORPORATED AND SHOULD NOT BE USED WITHOUT WRITTEN PERMISSION																					

10 9 8 7 6 5 4 3 2 1

PART NO.	KEY POS.	DIM 'P'	RECOMMENDED PCB THICKNESS	PLATING OPTION	LATCH COLOUR
78061-0001	CENTER (1.8V)	2.67	1.57	0.38uM/15uIN MIN. GOLD ON CONTACT 2.54uM/100uIN MIN. PURE TIN (MATTE) ON SOLDER TAILS 1.27uM/50uIN MIN. NICKEL UNDERPLATE	NATURAL (OFF WHITE)
78061-0002		3.18	2.36		
78061-0011		2.67	1.57	0.76uM/30uIN MIN. GOLD ON CONTACT 2.54uM/100uIN MIN. PURE TIN (MATTE) ON SOLDER TAILS 1.27uM/50uIN MIN. NICKEL UNDERPLATE	
78061-0012		3.18	2.36		
78061-0051		2.67	1.57	0.38uM/15uIN MIN. GOLD ON CONTACT 2.54uM/100uIN MIN. PURE TIN (MATTE) ON SOLDER TAILS 1.27uM/50uIN MIN. NICKEL UNDERPLATE	BLACK
78061-0052		3.18	2.36		
78061-0061		2.67	1.57	0.76uM/30uIN MIN. GOLD ON CONTACT 2.54uM/100uIN MIN. PURE TIN (MATTE) ON SOLDER TAILS 1.27uM/50uIN MIN. NICKEL UNDERPLATE	
78061-0062		3.18	2.36		

TRAY DWG ADDED EC NO: S2007-0602 DRAWN BY: CHANDRASEKAR CHECKED BY: CHANDRASEKAR APPROVED BY: GGLEE	QUALITY SYMBOLS DESCRIPTION REV	GENERAL TOLERANCES (UNLESS SPECIFIED)		DIMENSION STYLE MM ONLY		SCALE NTS	DESIGN UNITS METRIC	THIRD ANGLE PROJECTION	
			mm	INCH	DRAWN BY JTAN	DATE 2005/10/20	TITLE FB DIMM, 1.00MM PITCH 240 CKTS, VERTICAL T/H		
		4 PLACES ± ---	± ---	± ---	CHECKED BY SRRAMESH	DATE 2005/12/05	MATERIAL NO. SEE TABLE		
		3 PLACES ± ---	± ---	± ---	APPROVED BY GGLEE	DATE 2005/12/06	DOCUMENT NO. SD-78061-001		
2 PLACES ± 0.2	± ---	± ---	ANGULAR ± 1 °		SIZE A3		SHEET NO. 4 OF 5		
1 PLACE ± ---	± ---	± ---	DRAFT WHERE APPLICABLE MUST REMAIN WITHIN DIMENSIONS		THIS DRAWING CONTAINS INFORMATION THAT IS PROPRIETARY TO MOLEX INCORPORATED AND SHOULD NOT BE USED WITHOUT WRITTEN PERMISSION				

9 8 7 6 5 4 3 2 1



NOTES:
1. CAVITY QTY: 2 X 15 = 30 PCS

TRAY DWG ADDED EC NO: S2007-0602 DRAWN/CMO: 2006/12/26 CHKD/SHEIN: 2006/12/28 APPR/GGLEE: 2006/12/28 A4 REV	QUALITY SYMBOLS ▽=0 ▽=0	GENERAL TOLERANCES (UNLESS SPECIFIED) <table border="1"> <thead> <tr> <th></th> <th>mm</th> <th>INCH</th> </tr> </thead> <tbody> <tr> <td>4 PLACES</td> <td>± 0.1</td> <td>± 0.004</td> </tr> <tr> <td>3 PLACES</td> <td>± 0.15</td> <td>± 0.006</td> </tr> <tr> <td>2 PLACES</td> <td>± 0.2</td> <td>± 0.008</td> </tr> <tr> <td>1 PLACE</td> <td>± 0.3</td> <td>± 0.012</td> </tr> </tbody> </table> ANGULAR ± 1 °		mm	INCH	4 PLACES	± 0.1	± 0.004	3 PLACES	± 0.15	± 0.006	2 PLACES	± 0.2	± 0.008	1 PLACE	± 0.3	± 0.012	DIMENSION STYLE MM ONLY	SCALE NTS	DESIGN UNITS METRIC	THIRD ANGLE PROJECTION
		mm	INCH																		
	4 PLACES	± 0.1	± 0.004																		
	3 PLACES	± 0.15	± 0.006																		
2 PLACES	± 0.2	± 0.008																			
1 PLACE	± 0.3	± 0.012																			
DRAWN BY: JTAN CHECKED BY: SRRAMESH APPROVED BY: GGLEE DATE: 2005/10/20 DATE: 2005/12/05 DATE: 2005/12/06	TITLE FB DIMM, 1.00MM PITCH 240 CKTS, VERTICAL T/H	MATERIAL NO. SEE TABLE	DOCUMENT NO. SD-78061-001	SHEET NO. 5 OF 5																	
DRAFT WHERE APPLICABLE MUST REMAIN WITHIN DIMENSIONS																					
SIZE A3 THIS DRAWING CONTAINS INFORMATION THAT IS PROPRIETARY TO MOLEX INCORPORATED AND SHOULD NOT BE USED WITHOUT WRITTEN PERMISSION																					