



Distributor of Molex Connector Corporation: Excellent Integrated System Limited
Datasheet of 0781206013 - Connector Receptacle 60 Position 0.050" (1.27mm) Gold Surface Mount

Contact us: sales@integrated-circuit.com Website: www.integrated-circuit.com

Excellent Integrated System Limited

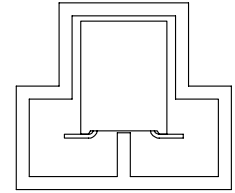
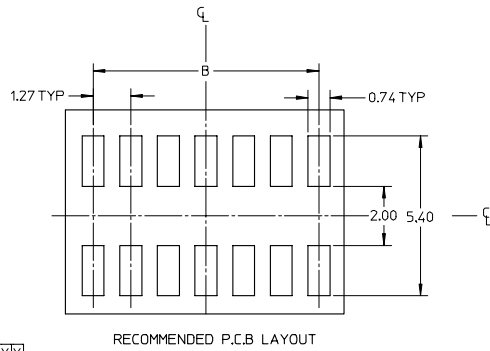
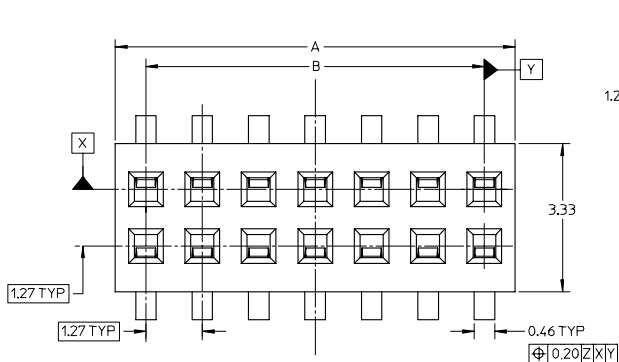
Stocking Distributor

Click to view price, real time Inventory, Delivery & Lifecycle Information:

[Molex Connector Corporation](#)
[0781206013](#)

For any questions, you can email us directly:
sales@integrated-circuit.com

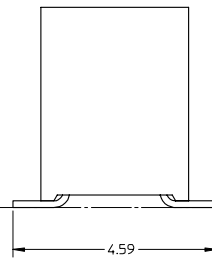
Contact us: sales@integrated-circuit.com Website: www.integrated-circuit.com



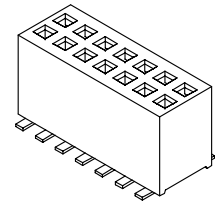
PART PACKED IN TUBE



0.15



Z



- NOTE:
1. MATERIAL: HOUSING: LCP GLASS FILLED, COLOR: BLACK
 TERMINAL: PHOSPHOR BRONZE WITH 0.254μm GOLD AT CONTACT AREA OVER 1.27mm NICKEL UNDERPLATE.
 2. PIN PUSHOUT FORCE: 0.4KG MIN
 3. THE ABOVE 14 CKT SHOWN IS FOR ILLUSTRATION ONLY.
 4. PARTS TO BE PACKED IN TUBE.
 5. PRODUCT SPECIFICATION PS-87933-001 APPLIES.
 6. THIS PART IS TO BE MATED WITH 87932, 87933 OR 87934 SERIES
 7. PACKAGING SPECIFICATION REFER TO PK-89990-576

ADD OPTION PART # EEC NO: S2008-0097 DRAWN BY: C/WLAM CHECKED BY: C/KORWILEE APPROVED BY: A/PPE/KWILEE DATE: 2007/09/05 DATE: 2007/09/19 DATE: 2007/09/27	QUALITY SYMBOLS ▽=0 ▽=0	GENERAL TOLERANCES (UNLESS SPECIFIED)		DIMENSION STYLE MM ONLY		SCALE	DESIGN UNITS	THIRD ANGLE PROJECTION
			mm	INCH	NTS	METRIC		
		4 PLACES	±---	±---	DATE	TITLE		
		3 PLACES	±---	±---	DATE	1.27MM PITCH, DUAL ROW RECEPTACLE, SMT		
	2 PLACES	±0.15	±---	DATE				
	1 PLACE	±---	±---	DATE				
	ANGULAR ± 1 °		APPROVED BY		DATE	MOLEX INCORPORATED		
	DRAFT WHERE APPLICABLE MUST REMAIN WITHIN DIMENSIONS		MATERIAL NO.		DATE	DOCUMENT NO.		
			SEE TABLE		2007/02/27	SD-78120-007		
			SIZE			SHEET NO.		
			A3			1 OF 2		
			THIS DRAWING CONTAINS INFORMATION THAT IS PROPRIETARY TO MOLEX INCORPORATED AND SHOULD NOT BE USED WITHOUT WRITTEN PERMISSION					

Contact us: sales@integrated-circuit.com Website: www.integrated-circuit.com

P/N PACKED IN TUBE	CKT SIZE	KAPTON TAPE	DIMENSION	
			A	B
78120-0813	08	NO	5.19	3.81
78120-1013	10	NO	6.46	5.08
78120-2013	20	NO	12.81	11.43
78120-3013	30	NO	19.16	17.78
78120-4013	40	NO	25.51	24.13
78120-5013	50	NO	31.86	30.48
78120-6013	60	NO	38.21	36.83
78120-6813	68	NO	43.29	41.91
78120-7013	70	NO	44.56	43.18
78120-8013	80	NO	50.91	49.53
78120-9013	90	NO	57.26	55.88
78120-0013	100	NO	63.61	62.23

ADD OPTION PART # EC NO: S2008-0097 DRAWN BY: C/WLAM CHECKED BY: C/KWLEE APPROVED BY: A/P/KWLEE DATE: 2007/09/05 DATE: 2007/09/19 DATE: 2007/09/27 REV: A2	QUALITY SYMBOLS	GENERAL TOLERANCES (UNLESS SPECIFIED)	DIMENSION STYLE MM ONLY	SCALE NTS	DESIGN UNITS METRIC	THIRD ANGLE PROJECTION	
	$\nabla=0$ $\nabla=0$	4 PLACES ± --- ± --- 3 PLACES ± --- ± --- 2 PLACES ± 0.15 ± --- 1 PLACE ± --- ± --- ANGULAR ± 1 °	DRAWN BY: C/WLAM DATE: 2007/02/16 CHECKED BY: K/WLEE DATE: 2007/02/27 APPROVED BY: K/WLEE DATE: 2007/02/27	TITLE	1.27MM PITCH, DUAL ROW RECEPTACLE, SMT		
	DRAFT WHERE APPLICABLE MUST REMAIN WITHIN DIMENSIONS			MATERIAL NO.	DOCUMENT NO.	SHEET NO.	
				SEE TABLE	SD-78120-007	2 OF 2	
				THIS DRAWING CONTAINS INFORMATION THAT IS PROPRIETARY TO MOLEX INCORPORATED AND SHOULD NOT BE USED WITHOUT WRITTEN PERMISSION			