

## Excellent Integrated System Limited

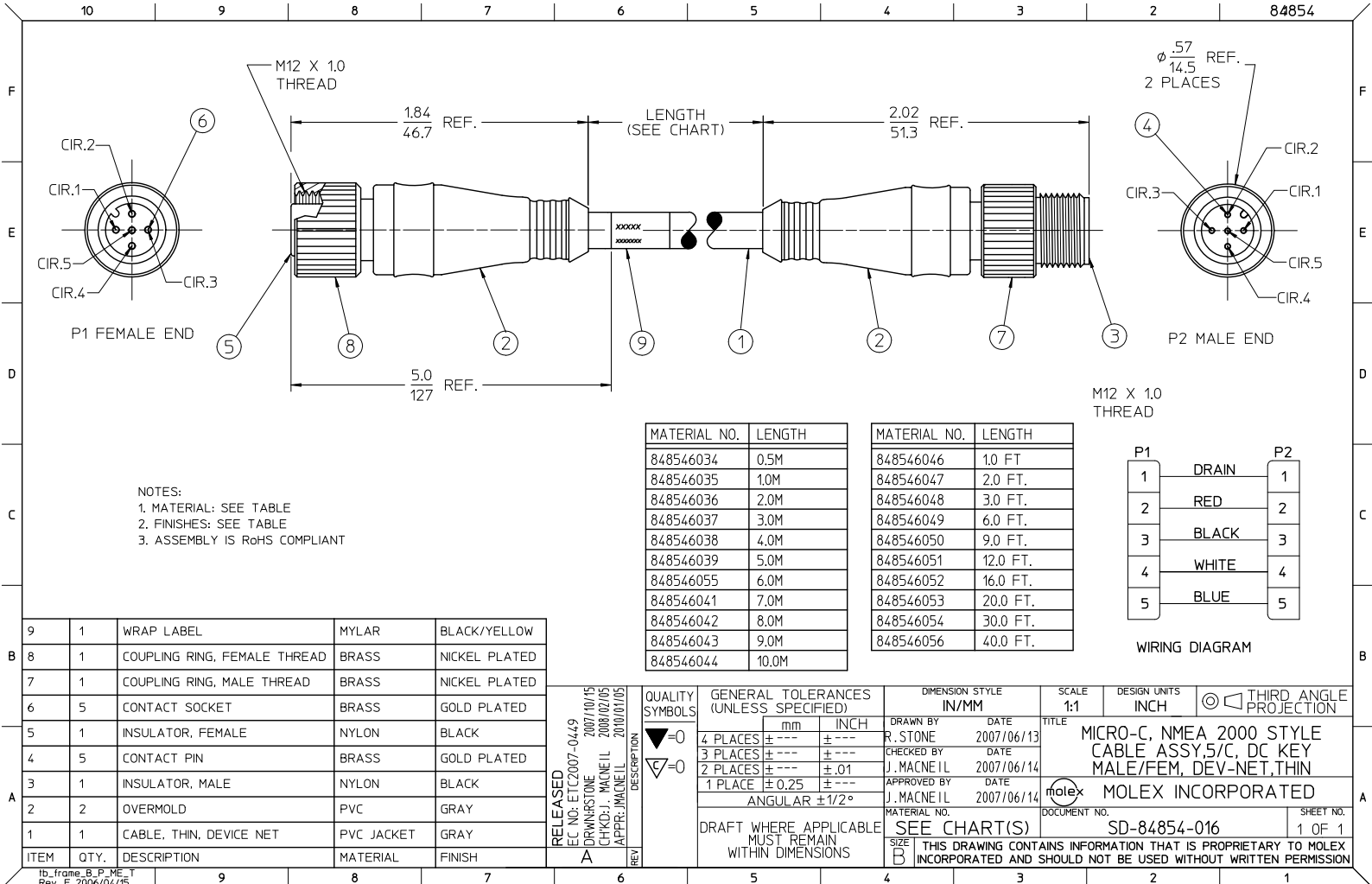
Stocking Distributor

Click to view price, real time Inventory, Delivery & Lifecycle Information:

[Molex Connector Corporation](#)  
[0848546051](#)

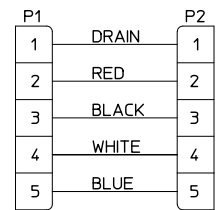
For any questions, you can email us directly:

[sales@integrated-circuit.com](mailto:sales@integrated-circuit.com)



NOTES:  
 1. MATERIAL: SEE TABLE  
 2. FINISHES: SEE TABLE  
 3. ASSEMBLY IS RoHS COMPLIANT

| MATERIAL NO. | LENGTH | MATERIAL NO. | LENGTH   |
|--------------|--------|--------------|----------|
| 848546034    | 0.5M   | 848546046    | 1.0 FT.  |
| 848546035    | 1.0M   | 848546047    | 2.0 FT.  |
| 848546036    | 2.0M   | 848546048    | 3.0 FT.  |
| 848546037    | 3.0M   | 848546049    | 6.0 FT.  |
| 848546038    | 4.0M   | 848546050    | 9.0 FT.  |
| 848546039    | 5.0M   | 848546051    | 12.0 FT. |
| 848546055    | 6.0M   | 848546052    | 16.0 FT. |
| 848546041    | 7.0M   | 848546053    | 20.0 FT. |
| 848546042    | 8.0M   | 848546054    | 30.0 FT. |
| 848546043    | 9.0M   | 848546056    | 40.0 FT. |
| 848546044    | 10.0M  |              |          |



WIRING DIAGRAM

| ITEM | QTY. | DESCRIPTION                  | MATERIAL   | FINISH        |
|------|------|------------------------------|------------|---------------|
| 9    | 1    | WRAP LABEL                   | MYLAR      | BLACK/YELLOW  |
| 8    | 1    | COUPLING RING, FEMALE THREAD | BRASS      | NICKEL PLATED |
| 7    | 1    | COUPLING RING, MALE THREAD   | BRASS      | NICKEL PLATED |
| 6    | 5    | CONTACT SOCKET               | BRASS      | GOLD PLATED   |
| 5    | 1    | INSULATOR, FEMALE            | NYLON      | BLACK         |
| 4    | 5    | CONTACT PIN                  | BRASS      | GOLD PLATED   |
| 3    | 1    | INSULATOR, MALE              | NYLON      | BLACK         |
| 2    | 2    | OVERMOLD                     | PVC        | GRAY          |
| 1    | 1    | CABLE, THIN, DEVICE NET      | PVC JACKET | GRAY          |

RELEASED  
 EC NO: ETC2007-0449  
 2007/10/15  
 DRAWN BY: R. STONE  
 CHECKED BY: J. MACNEIL  
 APPROVED BY: J. MACNEIL  
 DATE: 2008/02/05  
 DATE: 2010/07/05

QUALITY SYMBOLS  
 ▽=0  
 ▽=0

| GENERAL TOLERANCES (UNLESS SPECIFIED) | DIMENSION STYLE |        |
|---------------------------------------|-----------------|--------|
|                                       | mm              | INCH   |
| 4 PLACES                              | ±.01            | ±.0005 |
| 3 PLACES                              | ±.01            | ±.0005 |
| 2 PLACES                              | ±.01            | ±.0005 |
| 1 PLACE                               | ±.025           | ±.001  |
| ANGULAR                               |                 | ±1/2°  |

DRAWN BY: R. STONE  
 DATE: 2007/06/13  
 CHECKED BY: J. MACNEIL  
 DATE: 2007/06/14  
 APPROVED BY: J. MACNEIL  
 DATE: 2007/06/14

SCALE: 1:1  
 DESIGN UNITS: INCH  
 THIRD ANGLE PROJECTION  
 TITLE: MICRO-C, NMEA 2000 STYLE CABLE ASSY, 5/C, DC KEY MALE/FEM, DEV-NET, THIN  
 MOLEX INCORPORATED  
 MATERIAL NO.: SEE CHART(S)  
 DOCUMENT NO.: SD-84854-016  
 SHEET NO.: 1 OF 1