

Excellent Integrated System Limited

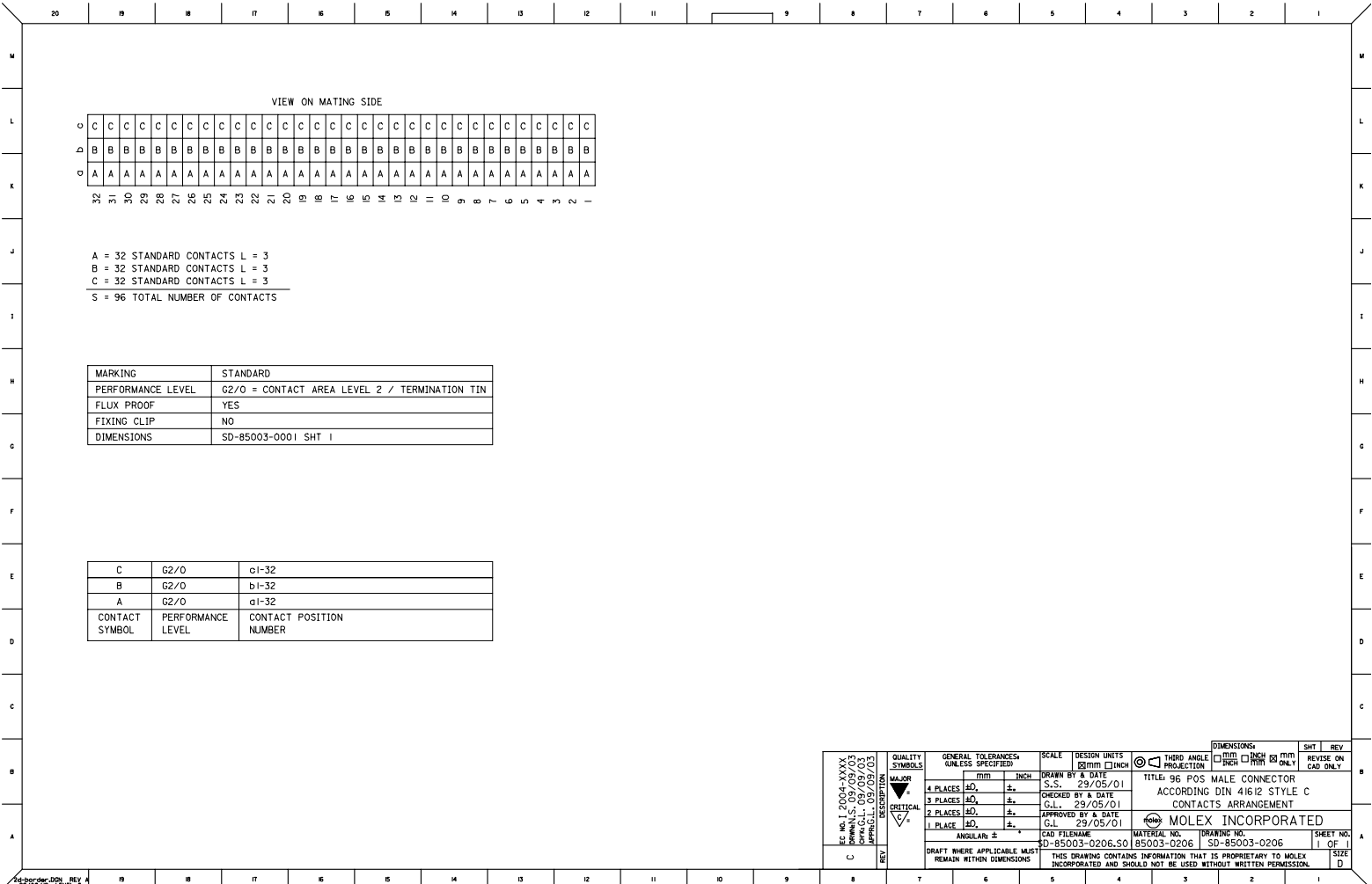
Stocking Distributor

Click to view price, real time Inventory, Delivery & Lifecycle Information:

[Molex Connector Corporation](#)
[0850030206](#)

For any questions, you can email us directly:

sales@integrated-circuit.com



A = 32 STANDARD CONTACTS L = 3
 B = 32 STANDARD CONTACTS L = 3
 C = 32 STANDARD CONTACTS L = 3
 S = 96 TOTAL NUMBER OF CONTACTS

MARKING	STANDARD
PERFORMANCE LEVEL	G2/O = CONTACT AREA LEVEL 2 / TERMINATION TIN
FLUX PROOF	YES
FIXING CLIP	NO
DIMENSIONS	SD-85003-0001 SHT 1

C	G2/O	ci-32
B	G2/O	bi-32
A	G2/O	ai-32
CONTACT SYMBOL	PERFORMANCE LEVEL	CONTACT POSITION NUMBER

PART 0850030206 REVISIONS 09/03/03 05/09/03 05/09/03 05/09/03 C REV	QUALITY SYMBOLS MAJOR CRITICAL	GENERAL TOLERANCES (UNLESS SPECIFIED) 4 PLACES ±0.15 3 PLACES ±0.10 2 PLACES ±0.08 1 PLACE ±0.05 ANGULAR ±°	SCALE DESIGN UNITS 1:100 (MM) 1:20 (INCH) DRAWN BY & DATE S.S. 29/05/01 CHECKED BY & DATE G.L. 29/05/01 APPROVED BY & DATE G.L. 29/05/01 CAD FILENAME SD-85003-0206.S0	THIRD ANGLE PROJECTION TITLE 96 POS MALE CONNECTOR ACCORDING DIN 41612 STYLE C CONTACTS ARRANGEMENT MOLEX INCORPORATED MATERIAL NO. 85003-0206 DRAWING NO. SD-85003-0206	DIMENSIONS SHT 1 REV 1 REVISIONS CAD ONLY
	DRAFT WHERE APPLICABLE MUST REMAIN WITHIN DIMENSIONS				
	THIS DRAWING CONTAINS INFORMATION THAT IS PROPRIETARY TO MOLEX INCORPORATED AND SHOULD NOT BE USED WITHOUT WRITTEN PERMISSION.				
	SHEET NO. 1 OF 1 SIZE D				
	46/06/06 REV 6 96/06/06 LEVEL 6				