

## Excellent Integrated System Limited

Stocking Distributor

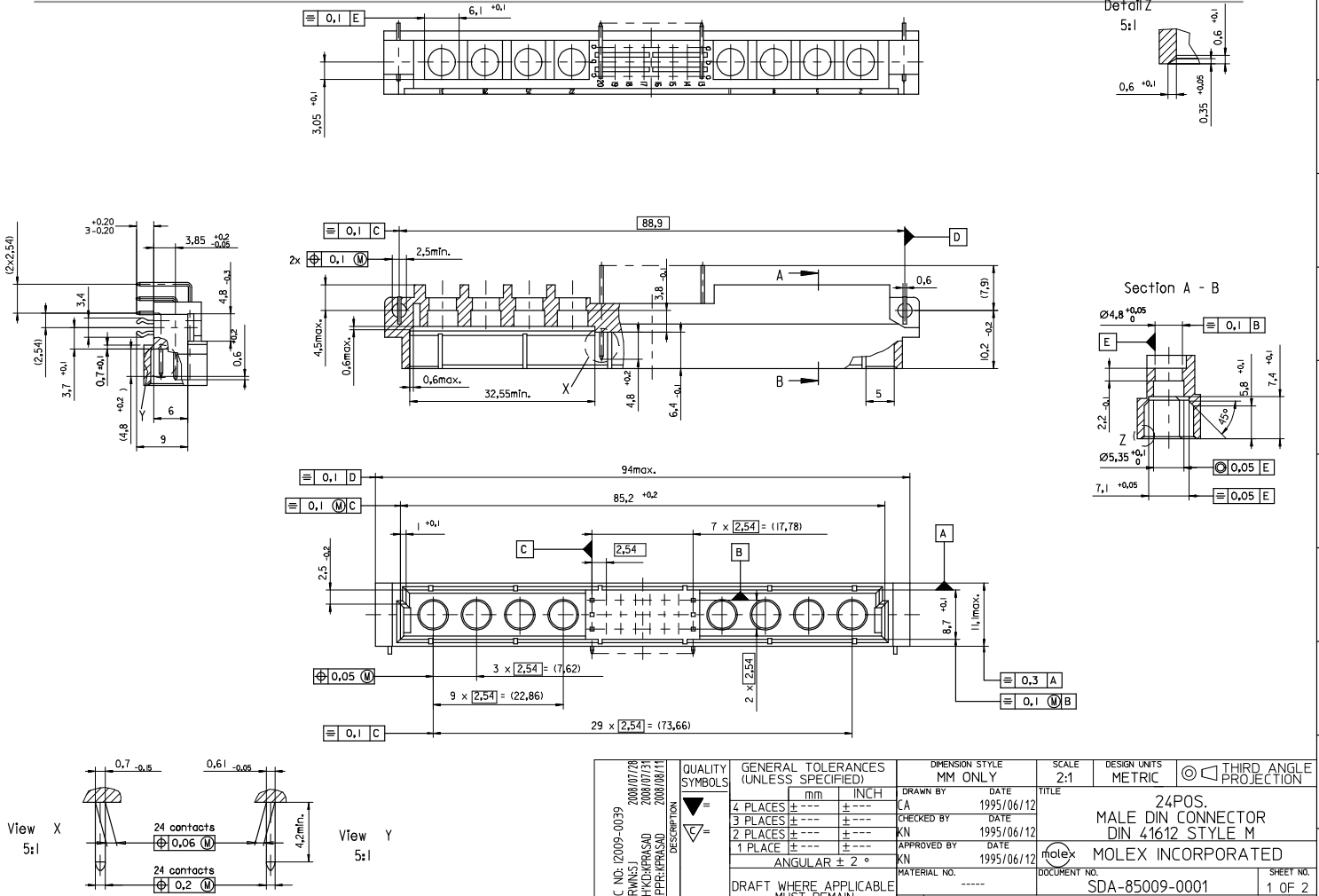
Click to view price, real time Inventory, Delivery & Lifecycle Information:

[Molex Connector Corporation](#)

[0850090555](#)

For any questions, you can email us directly:

[sales@integrated-circuit.com](mailto:sales@integrated-circuit.com)



EC NO: I2009-0039 2008/07/28 2008/07/31 CHKD:KPRASAD APPR:KPRASAD 2008/08/11	QUALITY SYMBOLS ▽ = ▽ = DESCRIPTION	GENERAL TOLERANCES (UNLESS SPECIFIED)		DIMENSION STYLE MM ONLY		SCALE 2:1	DESIGN UNITS METRIC	THIRD ANGLE PROJECTION	
		4 PLACES ± --- ± --- 3 PLACES ± --- ± --- 2 PLACES ± --- ± --- 1 PLACE ± --- ± --- ANGULAR ± 2 °	mm INCH	DRAWN BY CA	DATE 1995/06/12	CHECKED BY KN	DATE 1995/06/12	APPROVED BY KN	DATE 1995/06/12
MATERIAL NO. ----- DOCUMENT NO. SDA-85009-0001	DRAFT WHERE APPLICABLE MUST REMAIN WITHIN DIMENSIONS	SIZE A2	THIS DRAWING CONTAINS INFORMATION THAT IS PROPRIETARY TO MOLEX INCORPORATED AND SHOULD NOT BE USED WITHOUT WRITTEN PERMISSION						SHEET NO. 1 OF 2

VIEW ON MATING SIDE

U					C	C	C	C	C	C																																				
0					B	B	B	B	B	B																																				
1					A	A	A	A	A	A																																				

- A = 8 STANDARD CONTACTS L=3
  - B = 8 STANDARD CONTACTS L=3
  - C = 8 STANDARD CONTACTS L=3
- S = 24 TOTAL NUMBER OF CONTACTS

Marking	Standard
Performance level	G1/0 = Contact area level / Termination fin
Flux proof	no
Fixing clip	no
Dimensions	SDA-85009-0001 sht.1
Technical Data	PS-85003-0001

C	G1/0	c13-20
B	G1/0	b13-20
A	G1/0	a13-20

Perform. level  
Contact position number

REVISE ONLY ON CAD SYSTEM SH. REV.

CAD/CAM PROJECT NAME: S8500905  
THIS DRAWING CONTAINS INFORMATION THAT IS PROPRIETARY TO MOLEX INC. & SHOULD NOT BE USED WITHOUT WRITTEN PERMISSION

TITLE: 24 pos. Male connector acc. DIN 41612 style M contacts arrangement  
MOLEX EUROPE

SHEET NO. 1 OF 1 DATE 95/06/08

PART NO. 85009-0555 DWG NO. SDA-85009-0555 SIZE A

UNLESS OTHERWISE SPECIFIED TOLERANCES: ANGULAR  $\pm 2^\circ$

3 PLACE  $\pm$  INCH METRIC  $\pm$

2 PLACE  $\pm$

1 PLACE  $\pm$

DRAFT WHERE APPLICABLE MUST REMAIN WITHIN DIMENSIONS

DESIGN DIMENSION  MM  IN.

EQUIVALENT DIMENSION  MM  IN.

FOR PREVIOUS REVISIONS SEE MTR LIST

REVISIONS

see ECN No. 2204 96/07/18 Cd

LTR

FOR PREVIOUS REVISIONS SEE MTR LIST

SCALE

APPRO'D BY

CHK'D BY

DRWG BY

SIGN

APP'D BY

CHK'D BY

DRWG BY

SIGN

APP'D BY

CHK'D BY

DRWG BY

SIGN