

Excellent Integrated System Limited

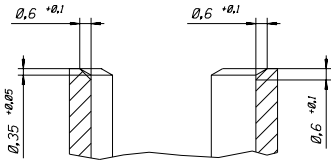
Stocking Distributor

Click to view price, real time Inventory, Delivery & Lifecycle Information:

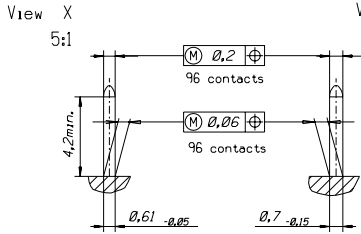
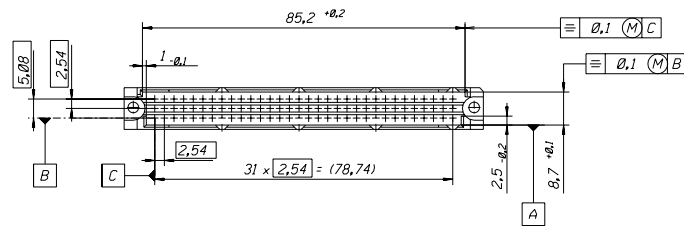
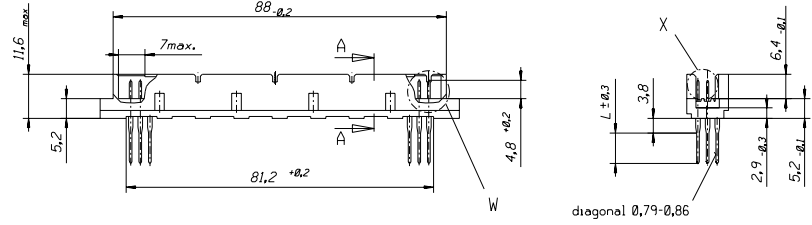
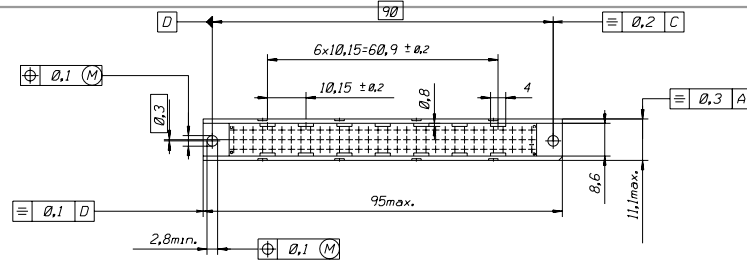
[Molex Connector Corporation](#)
[0850130189](#)

For any questions, you can email us directly:

sales@integrated-circuit.com



section A-A
5:1



View W
5:1

FIRST ANGLE PROJECTION REVISE ONLY ON CAD SYSTEM SH. REV.

UNLESS OTHERWISE SPECIFIED TOLERANCES: ANGULAR ±2° INCH METRIC

3 PLACE	±	±
2 PLACE	±	±
1 PLACE	±	±

DRAFT WHERE APPLICABLE MUST REMAIN WITHIN DIMENSIONS

DESIGN DIMENSION MM IN.

EQUIVALENT DIMENSION MM IN.

IF TWO DIMENSIONS ARE SHOWN THE UPPER IS THE DESIGN DIMENSION LOWER IS SECONDARY

DRWG BY: CO SIGN

CHK'D BY: KN SIGN

APP'D BY: SIGN

SCALE: 1:1

CAD/CAM PROJECT NAME: THIS DRAWING CONTAINS INFORMATION THAT IS PROPRIETARY TO MOLEX INC. & SHOULD NOT BE USED WITHOUT WRITTEN PERMISSION

TITLE: 96 pos. Male connector DIN 41612 style R (C-Pin) Dimensions

MOLEX EUROPE SHEET NO. DATE: 1 OF 3 91/11/28

PART NO. DWG NO. SIZE: see sh. no. 2 of 3 610-6043-201 B



10 9 8 7 6 5 4 3 2 1

VIEW ON MATING SIDE

O	A	A	A	A	A	A	A	A	A	A	A	A	A	A	A	A	A	A	A	A	A	A	A	A	A	A	A	A	A	A	A	A
o	A	A	A	A	A	A	A	A	A	A	A	A	A	A	A	A	A	A	A	A	A	A	A	A	A	A	A	A	A	A	A	A
O	A	A	A	A	A	A	A	A	A	A	A	A	A	A	A	A	A	A	A	A	A	A	A	A	A	A	A	A	A	A	A	A
	-	2	3	4	5	6	7	8	9	10	11	12	13	14	15	16	17	18	19	20	21	22	23	24	25	26	27	28	29	30	31	32

A = 96 STANDARD CONTACTS L = 2

MARKING	STANDARD
PERFORMANCE LEVEL	G2/0 = CONTACT AREA LEVEL2 / TERMINATION TIN
FLUX PROOF	NO
FIXING CLIP	NO
DIMENSIONS	610-6043-201 SHT I

A	G2/0	a1-32 b1-32 c1-32
CONTACT SYMBOL	PERFORMANCE LEVEL	CONTACT POSITION NUMBER

ENTER DESCRIPTION EC NO: I2009-0099 DRWNSJ 2008/09/16 CHKD:KPRASAD 2008/09/16 APPR:KPRASAD 2008/09/16 REV A	QUALITY SYMBOLS $\blacktriangledown=0$ $\nabla=0$	GENERAL TOLERANCES (UNLESS SPECIFIED) <table border="1"> <thead> <tr> <th></th> <th>mm</th> <th>INCH</th> </tr> </thead> <tbody> <tr> <td>4 PLACES</td> <td>\pm---</td> <td>\pm---</td> </tr> <tr> <td>3 PLACES</td> <td>\pm---</td> <td>\pm---</td> </tr> <tr> <td>2 PLACES</td> <td>\pm---</td> <td>\pm---</td> </tr> <tr> <td>1 PLACE</td> <td>\pm---</td> <td>\pm---</td> </tr> <tr> <td colspan="3">ANGULAR \pm---°</td> </tr> </tbody> </table>		mm	INCH	4 PLACES	\pm ---	\pm ---	3 PLACES	\pm ---	\pm ---	2 PLACES	\pm ---	\pm ---	1 PLACE	\pm ---	\pm ---	ANGULAR \pm ---°			DIMENSION STYLE MM ONLY DRAWN BY SUMESH DATE 2008/09/02 CHECKED BY KPRASAD DATE 2008/09/02 APPROVED BY KPRASAD DATE 2008/09/02 MATERIAL NO. 850130189	SCALE --- DESIGN UNITS METRIC THIRD ANGLE PROJECTION TITLE 96 POS. MALE CONNECTOR ACC. DIN 41612 STYLE R CONTACTS MOLEX INCORPORATED DOCUMENT NO. SD-85013-0189	SHEET NO. 1 OF 1
		mm	INCH																				
	4 PLACES	\pm ---	\pm ---																				
	3 PLACES	\pm ---	\pm ---																				
	2 PLACES	\pm ---	\pm ---																				
1 PLACE	\pm ---	\pm ---																					
ANGULAR \pm ---°																							
DRAFT WHERE APPLICABLE MUST REMAIN WITHIN DIMENSIONS		SIZE A3 THIS DRAWING CONTAINS INFORMATION THAT IS PROPRIETARY TO MOLEX INCORPORATED AND SHOULD NOT BE USED WITHOUT WRITTEN PERMISSION																					

9 8 7 6 5 4 3 2 1