

Excellent Integrated System Limited

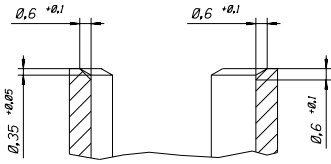
Stocking Distributor

Click to view price, real time Inventory, Delivery & Lifecycle Information:

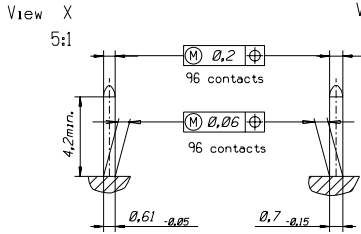
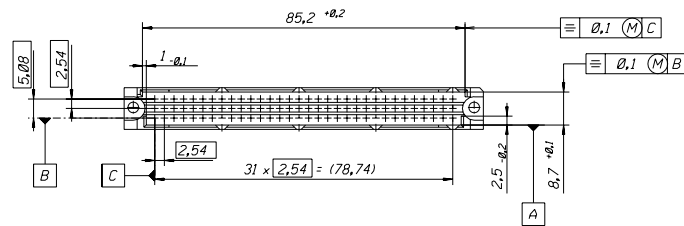
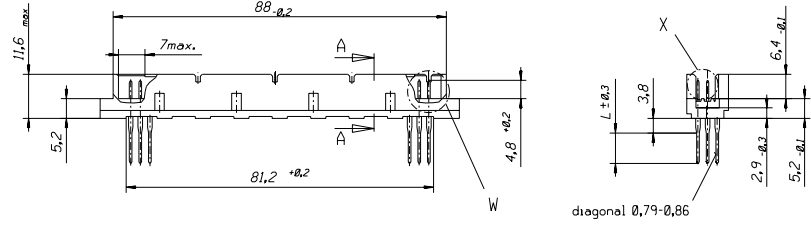
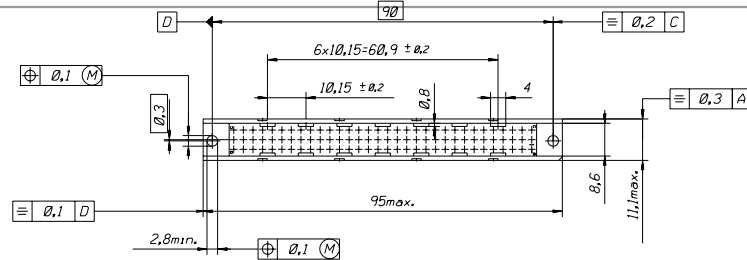
[Molex Connector Corporation](#)
[0850130218](#)

For any questions, you can email us directly:

sales@integrated-circuit.com



section A-A
5:1



View W
5:1

FIRST ANGLE PROJECTION REVISE ONLY ON CAD SYSTEM SH. REV.

UNLESS OTHERWISE SPECIFIED TOLERANCES: ANGULAR ±2° INCH METRIC

3 PLACE ±	±
2 PLACE ±	±
1 PLACE ±	±

DRAFT WHERE APPLICABLE MUST REMAIN WITHIN DIMENSIONS

DESIGN DIMENSION MM IN.

EQUIVALENT DIMENSION MM IN.

IF TWO DIMENSIONS ARE SHOWN THE UPPER IS THE DESIGN DIMENSION LOWER IS SECONDARY

DRWD BY	CO	SIGN
CHK'D BY	KN	SIGN
APP'D BY		SIGN
SCALE	1:1	

CAD/CAM PROJECT NAME THIS DRAWING CONTAINS INFORMATION THAT IS PROPRIETARY TO MOLEX INC. & SHOULD NOT BE USED WITHOUT WRITTEN PERMISSION

TITLE
96 pos. Male connector
DIN 41612 style R (C-Pin)
Dimensions

MOLEX EUROPE SHEET NO. DATE
1 OF 3 91/11/28

PART NO. DWG NO. SIZE
see sh. no. 2 of 3 610-6043-201 B