

Excellent Integrated System Limited

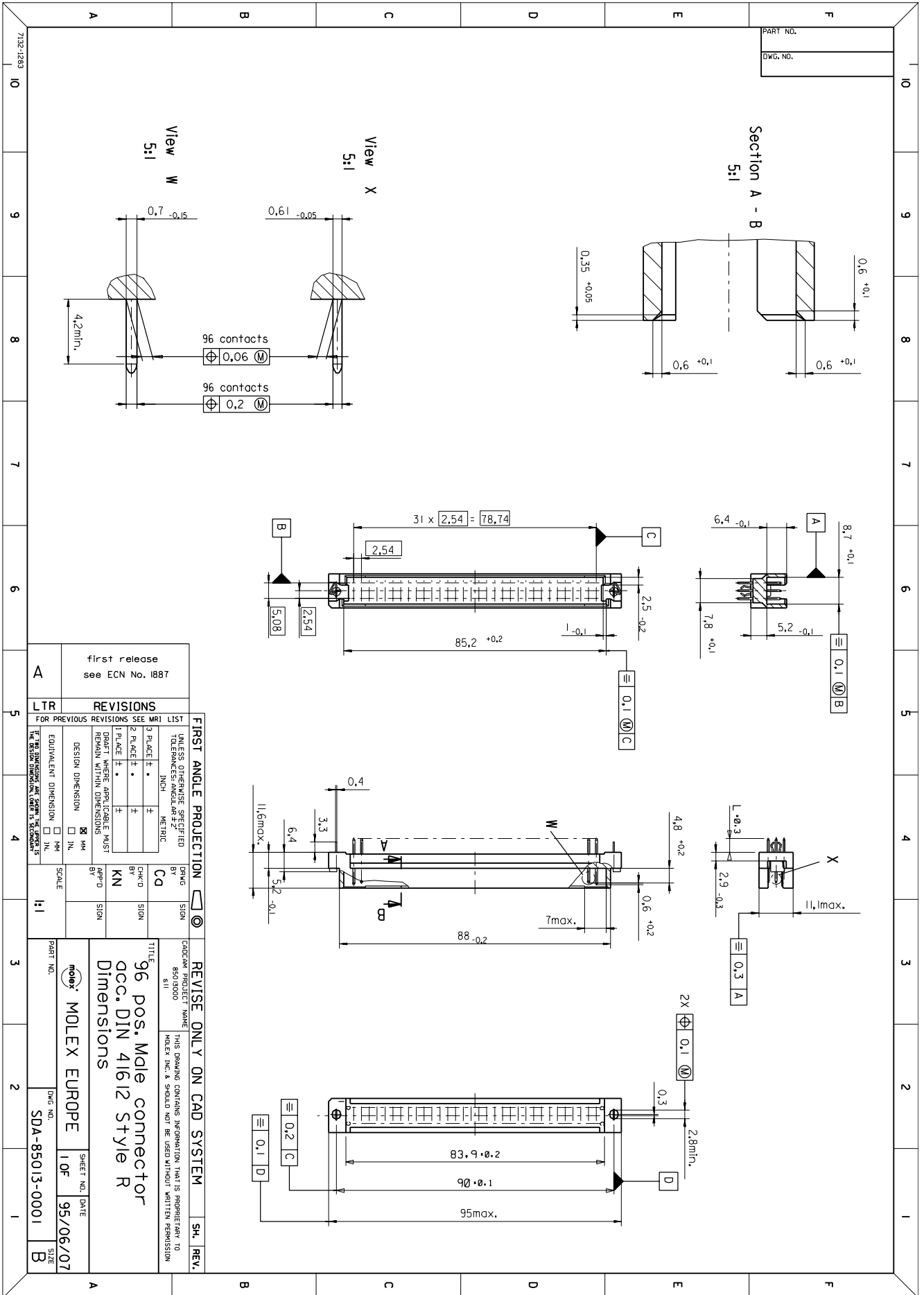
Stocking Distributor

Click to view price, real time Inventory, Delivery & Lifecycle Information:

[Molex Connector Corporation](#)
[0850133081](#)

For any questions, you can email us directly:

sales@integrated-circuit.com



View on mating side

○	Z	Z	A	A	A	A	A	A	A	A	A	A	A	A	A	A	A	A	A	A	A	Z	A	A	A	A	A	A	A	A	A	
○	Z	A	A	A	A	A	A	A	A	A	A	A	A	A	A	A	A	A	A	A	A	A	A	A	A	A	A	A	A	A		
○	Z	Z	A	A	A	A	A	A	A	A	A	A	A	A	A	A	A	A	A	A	A	Z	A	A	A	A	A	A	A	A		
	1	2	3	4	5	6	7	8	9	10	11	12	13	14	15	16	17	18	19	20	21	22	23	24	25	26	27	28	29	30	31	32

A = 89 standard contacts L=2,9
 Z = 7 FMLB contacts +0,6 L=2,9
 S = 96 total number of contacts

Marking	Standard
Performance level	G1/0 = Contact area perform. level I / Termination tin
Flux proof	no
Fixing clip	no
Dimensions	SDA-85013-0001 sht.1
Technical Data	PS-85013-0001

Z	G1/0	a1,2,24	b1	c1,2,24
A	G1/0	a3-23,25-32	b2-32	c3-23,25-32
Contact symbol	Perform. level	Contact position number		

first release see ECN No. 2362	LTR REVISIONS FOR PREVIOUS REVISIONS SEE MRI LIST	UNLESS OTHERWISE SPECIFIED TOLERANCES: ANGULAR ±2° INCH METRIC		DRWG BY Ca	SIGN	REVISIONS ONLY ON CAD SYSTEM		SH.	REV.	
		3 PLACE ± . ±		CHK'D BY KN	SIGN	THIS DRAWING CONTAINS INFORMATION THAT IS PROPRIETARY TO MOLEX INC. & SHOULD NOT BE USED WITHOUT WRITTEN PERMISSION				
		2 PLACE ± . ±		APP'D BY JB	SIGN	TITLE 96 pos. Male connector acc. DIN 41612 style R contacts arrangement				
		1 PLACE ± . ±		SCALE		molex MOLEX EUROPE		SHEET NO. 1 OF 1	DATE 96/12/16	
		DRAFT WHERE APPLICABLE MUST REMAIN WITHIN DIMENSIONS				PART NO. 85013-3081		DWG NO. SDA-85013-3081		SIZE A
DESIGN DIMENSION <input type="checkbox"/> MM <input type="checkbox"/> IN.		EQUIVALENT DIMENSION <input type="checkbox"/> MM <input type="checkbox"/> IN.		IF TWO DIMENSIONS ARE SHOWN THE UPPER IS THE DESIGN DIMENSION, LOWER IS SECONDARY						