

## Excellent Integrated System Limited

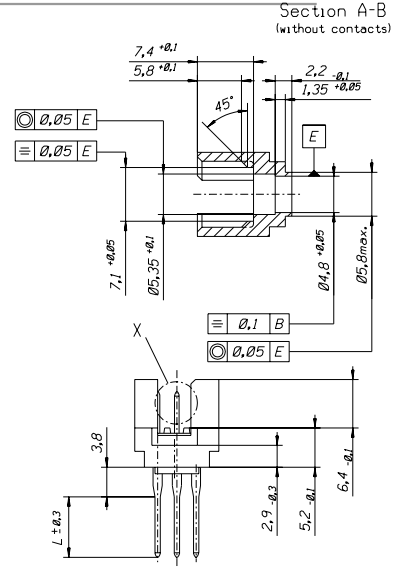
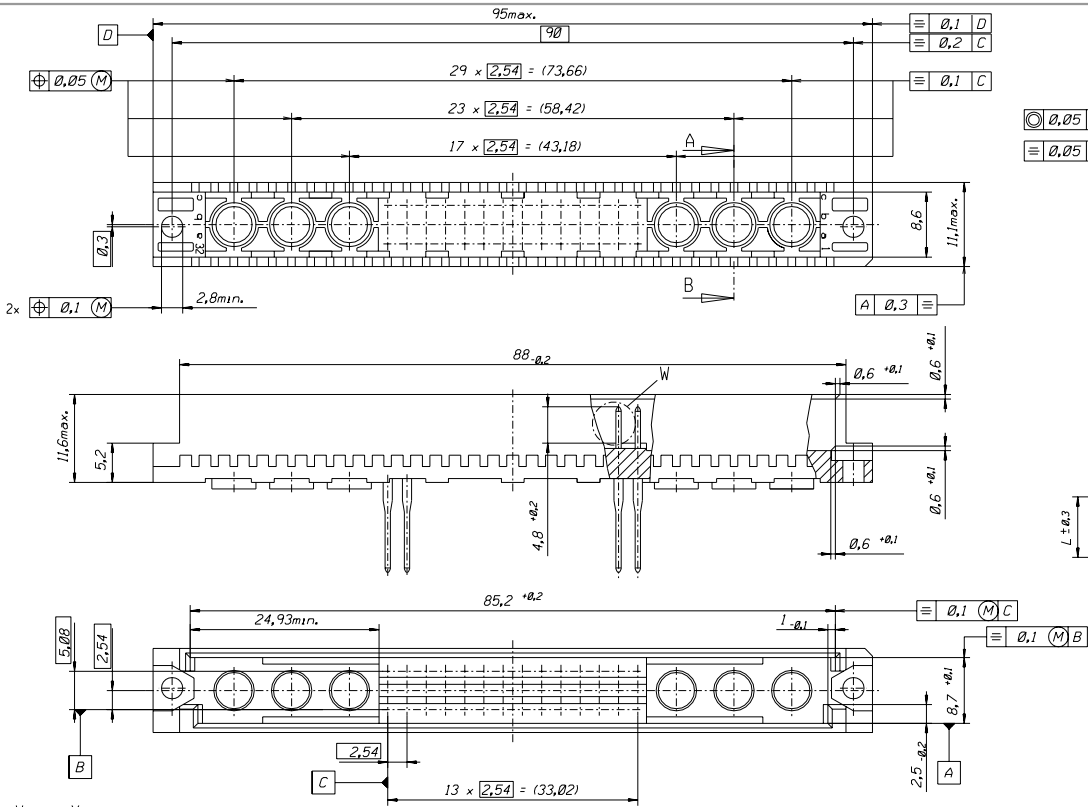
Stocking Distributor

Click to view price, real time Inventory, Delivery & Lifecycle Information:

[Molex Connector Corporation](#)  
[0850170074](#)

For any questions, you can email us directly:

[sales@integrated-circuit.com](mailto:sales@integrated-circuit.com)



|  |       |                           |      |  |   |
|--|-------|---------------------------|------|--|---|
| FIRST ANGLE PROJECTION   |       | REVISE ONLY ON CAD SYSTEM |      | SH.  | REV.  |
| UNLESS OTHERWISE SPECIFIED TOLERANCES ANGULAR $\pm 2^\circ$                              |       | DRWG BY                   | SIGN | CAD/CAM PROJECT NAME   | THIS DRAWING CONTAINS INFORMATION THAT IS PROPRIETARY TO MOLEX INC. & SHOULD NOT BE USED WITHOUT WRITTEN PERMISSION |
| INCH   |       | CO                        |      | 60393241   | dgn   |
| METRIC   |       | CHK'D BY                  | SIGN | TITLE  |   |
| 3 PLACE $\pm$  | $\pm$ | KN                        |      | 42 pos. Male connector<br>DIN 41612 style M (C-Pin)<br>inverted / Dimensions |   |
| 2 PLACE $\pm$  | $\pm$ | APP'D BY                  | SIGN | MOLEX EUROPE   |   |
| 1 PLACE $\pm$  | $\pm$ |                           |      | SHEET NO.  | DATE  |
| DESIGN DIMENSION <input type="checkbox"/> MM   |       | SCALE                     |      | 1 OF 3   | 93/05/04  |
| EQUIVALENT DIMENSION <input type="checkbox"/> MM   |       | SCALE                     |      | PART NO.   | SIZE  |
| IF TWO DIMENSIONS ARE SHOWN THE UPPER IS THE DESIGN DIMENSION UNLESS OTHERWISE SPECIFIED |       | SCALE                     |      | see sh. no. 2 of 3   | B   |
|  |       | SCALE                     |      | DWG NO.  |   |
|  |       | SCALE                     |      | 603-6093-24  |   |