

Excellent Integrated System Limited

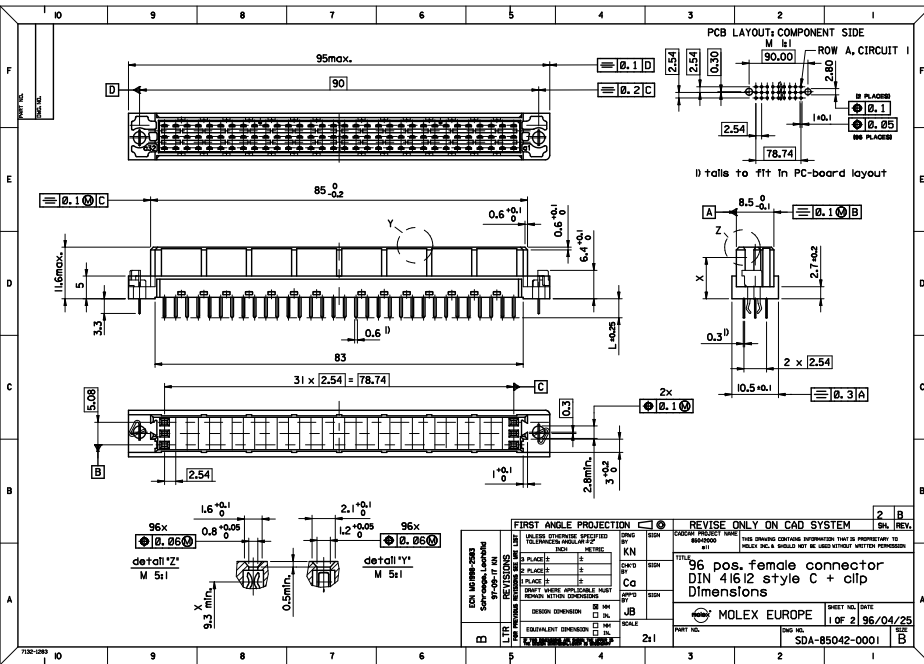
Stocking Distributor

Click to view price, real time Inventory, Delivery & Lifecycle Information:

[Molex Connector Corporation](#)
[0850426050](#)

For any questions, you can email us directly:

sales@integrated-circuit.com



SHT. 1 OF		MRI -			
MODIFICATION RECORD INDEX					
ECN	ISS.	DATE	INIT.	SHTS. AFFECTED	DESCRIPTION OF MOD.
2213	A	96.04.26	KN	1 / 2	first release
2253	AI	96.10.01	KN	1	Kontur ueber Rastfenster
2583	B	97.09.17	KN	1	Schraege Im Flanschbereich Lochbild

MOLEX EUROPE		REVISE ONLY ON CAD SYSTEM	
THIS DRAWING CARRIES INFORMATION THAT IS PROPRIETARY TO MOLEX INC. & SHOULD NOT BE USED WITHOUT WRITTEN PERMISSION.	DATE	SCALE	SIZE
MOLEX EUROPE	11 OF 21	2:1	B
MOLEX EUROPE	11 OF 21	96/04/25	B
THIS DRAWING CARRIES INFORMATION THAT IS PROPRIETARY TO MOLEX INC. & SHOULD NOT BE USED WITHOUT WRITTEN PERMISSION.	DATE	SCALE	SIZE
MOLEX EUROPE	11 OF 21	96/04/25	B

LEVEL CHART

1	17	33	49
2	18	34	50
3	19	35	51 LEVEL INDEX
4	20	36	52 RESERVED
5	21	37	53 RESERVED
6	22	38	54 Inspection Balloons
7	23	39	55 DIMENSIONS
8	24	40	56 TABLES/CHARTS
9	25	41	57 REVISION TEXT & MRI
10	26	42	58 Notes/text - English
11	27	43	59 Bill of materials
12	28	44	60 notes/text - german
13	29	45	61
14	30	46	62 notes/text - french
15	31	47	63 RESERVED
16	32	48	

VIEW ON MATING SIDE

A	A	A	A	A	A	A	A	A	A	A	A	A	A	A	A	A	A	A	A	A	A	A	A
A	A	A	A	A	A	A	A	A	A	A	A	A	A	A	A	A	A	A	A	A	A	A	A
A	A	A	A	A	A	A	A	A	A	A	A	A	A	A	A	A	A	A	A	A	A	A	A
1	2	3	4	5	6	7	8	9	10	11	12	13	14	15	16	17	18	19	20	21	22	23	24

A = 96 STANDARD CONTACTS L-2,9

Marking	Standard
Performance level	G3/0 = Contact area level 3 / Termination fin
Flux proof	no
Fixing clip	no
Dimensions	SDA-85042-0001.sht.l
Technical Data	PS-85042-0001

A	G3/0	a1-32	b1-32	c1-32
Contact symbol	Per form.	Contact position number		

ECN 2348 first release REVISIONS LTR FOR PREVIOUS REVISIONS SEE MTR LIST				REVISE ONLY ON CAD SYSTEM		SH. REV.	
UNLESS OTHERWISE SPECIFIED TOLERANCES: ANGULAR $\pm 2^\circ$ INCH METRIC 3 PLACE $\pm . \cdot$ \pm 2 PLACE $\pm \cdot$ \pm 1 PLACE $\pm .$ \pm				DRWG BY KN	SIGN	CAD/CAM PROJECT NAME S8504260 S51	
DRAFT WHERE APPLICABLE MUST REMAIN WITHIN DIMENSIONS				CHK'D BY Ca	SIGN	THIS DRAWING CONTAINS INFORMATION THAT IS PROPRIETARY TO MOLEX, INC. & SHOULD NOT BE USED WITHOUT WRITTEN PERMISSION	
DESIGN DIMENSION <input type="checkbox"/> MM <input type="checkbox"/> IN. EQUIVALENT DIMENSION <input type="checkbox"/> MM <input type="checkbox"/> IN.				APP'D BY JB	SIGN	TITLE 96 pos. female connector acc. DIN 41612 style C contacts arrangement	
SCALE				SHEET NO. 1 OF 1		DATE 96/12/05	
THE TWO DIMENSIONS ARE SHOWN. THE FIRST IS THE DESIGN DIMENSION. LOWER IS SECONDARY				MOLEX MOLEX EUROPE		PART NO. 85042-6050	
DWG NO. 85042-6050				DWG NO.		SIZE A	