

## Excellent Integrated System Limited

Stocking Distributor

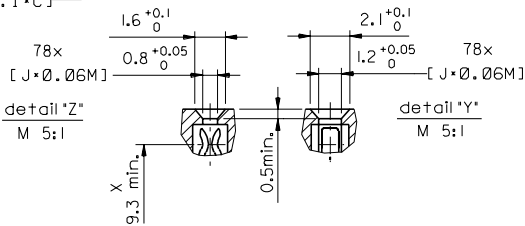
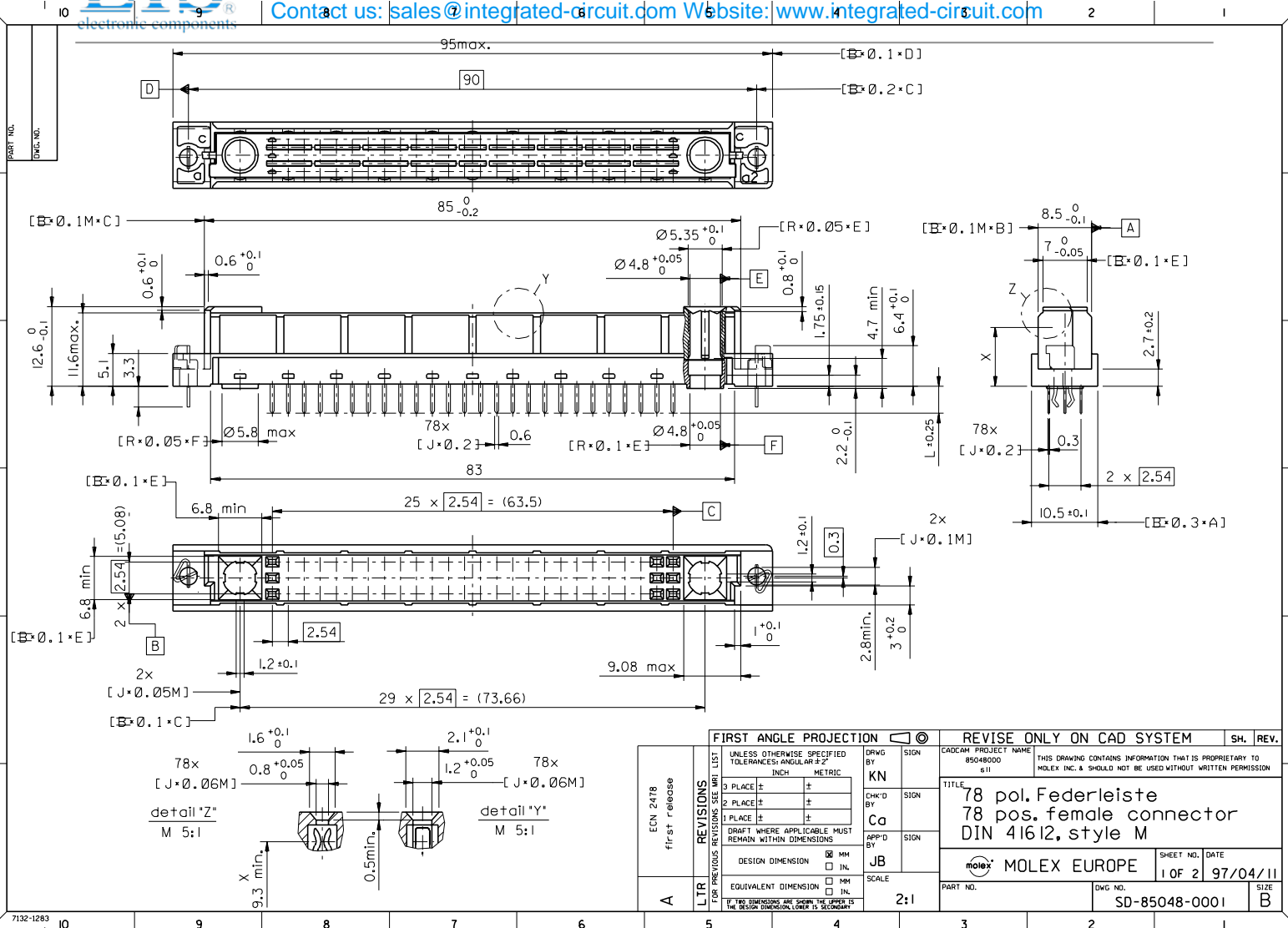
Click to view price, real time Inventory, Delivery & Lifecycle Information:

[Molex Connector Corporation](#)  
[0850480153](#)

For any questions, you can email us directly:

[sales@integrated-circuit.com](mailto:sales@integrated-circuit.com)

PART NO.  
DWG. NO.



ECN 2478	first release
A	LTR

FIRST ANGLE PROJECTION		REVISIONS	
UNLESS OTHERWISE SPECIFIED TOLERANCES: ANGULAR ±2°	INCH	3 PLACE ±	±
	METRIC	2 PLACE ±	±
		1 PLACE ±	±
DRAFT WHERE APPLICABLE MUST REMAIN WITHIN DIMENSIONS			
DESIGN DIMENSION	<input checked="" type="checkbox"/> MM		
	<input type="checkbox"/> IN.		
EQUIVALENT DIMENSION	<input type="checkbox"/> MM		
	<input type="checkbox"/> IN.		
IF TWO DIMENSIONS ARE GIVEN, THE UPPER IS THE DESIGN DIMENSION, LOWER IS SECONDARY			

REVISE ONLY ON CAD SYSTEM		SH.	REV.
CAD/CAM PROJECT NAME	85048000		
THIS DRAWING CONTAINS INFORMATION THAT IS PROPRIETARY TO MOLEX INC. & SHOULD NOT BE USED WITHOUT WRITTEN PERMISSION			
TITLE		78 pos. Federleiste 78 pos. female connector DIN 41612, style M	
MOLEX MOLEX EUROPE	SHEET NO.	DATE	
	1 OF 2	97/04/11	
PART NO.	DWG. NO.	SIZE	
	SD-85048-0001	B	

VIEW ON MATING SIDE

C	A	A	A	A	A	A	A	A	A	A	A	A	A	A	A	A	A	A	A
0	A	A	A	A	A	A	A	A	A	A	A	A	A	A	A	A	A	A	A
1	A	A	A	A	A	A	A	A	A	A	A	A	A	A	A	A	A	A	A
2																			
3																			
4																			
5																			
6																			
7																			
8																			
9																			
0																			
1																			
2																			
3																			
4																			
5																			
6																			
7																			
8																			
9																			
0																			
1																			
2																			
3																			
4																			
5																			
6																			
7																			
8																			
9																			
0																			
1																			
2																			
3																			
4																			
5																			
6																			
7																			
8																			
9																			
0																			
1																			
2																			
3																			
4																			
5																			

A = 78 STANDARD CONTACTS L-4,5

Marking	Standard
Performance level	G2/0 = Contact area level 2 / Termination fin
Flux proof	no
Fixing clip	no
Dimensions	SD-85048-0001 sht.1
Technical Data	PS-85042-0001

A		B		C		D		E		F	

REVISIONS		ECN 2478 first release	LTR
FOR PREVIOUS REVISIONS SEE MRL LIST			
UNLESS OTHERWISE SPECIFIED TOLERANCES: ANGULAR $\pm 2^{\circ}$	INCH	METRIC	SIGN
3 PLACE $\pm$	$\pm$		CHK'D BY
2 PLACE $\pm$	$\pm$		BY
1 PLACE $\pm$	$\pm$		APPRO'D BY
DRAFT WHERE APPLICABLE MUST REMAIN WITHIN DIMENSIONS			
DESIGN DIMENSION	<input type="checkbox"/> MM	<input type="checkbox"/> IN.	SCALE
EQUIVALENT DIMENSION	<input type="checkbox"/> MM	<input type="checkbox"/> IN.	
IF TWO DIMENSIONS ARE SHOWN THE FIRST IS THE DESIGN DIMENSION, LOWER IS SECONDARY			
CAD/CAM PROJECT NAME		THIS DRAWING CONTAINS INFORMATION THAT IS PROPRIETARY TO MOLEX, INC. & SHOULD NOT BE USED WITHOUT WRITTEN PERMISSION	
s8504801 s5.1			
TITLE		SHEET NO. DATE	
78 pos. female connector acc. DIN 41612, style M contacts arrangement		1 OF 1 97/05/20	
MOLEX EUROPE		PART NO. DWG NO. SIZE	
85048-0153		SD-85048-0153 A	
REVISIONS ONLY ON CAD SYSTEM			
SH. REV.			