

Excellent Integrated System Limited

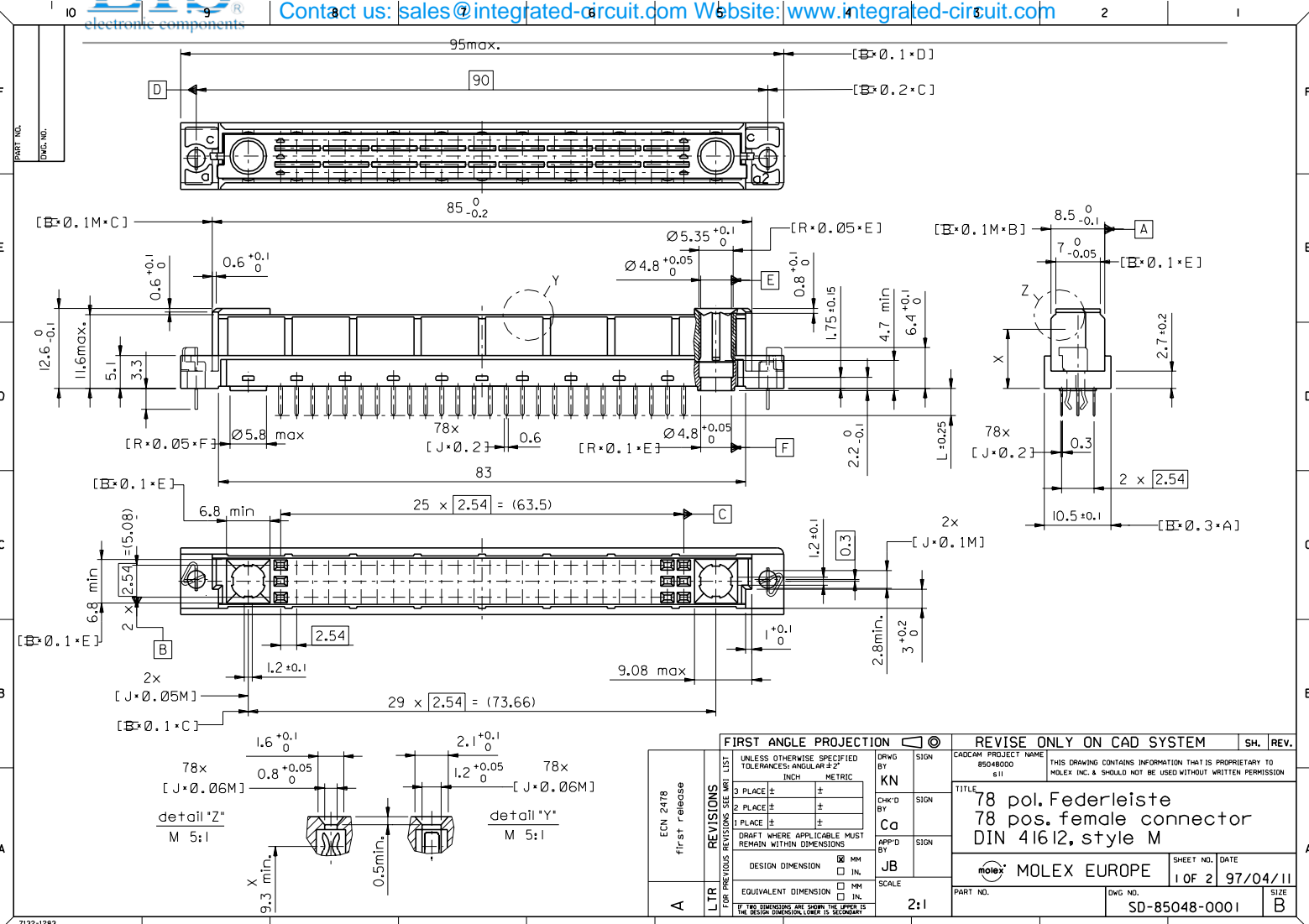
Stocking Distributor

Click to view price, real time Inventory, Delivery & Lifecycle Information:

[Molex Connector Corporation](#)
[0850480737](#)

For any questions, you can email us directly:

sales@integrated-circuit.com



| | | | | | | |
|---------------------------|--|-----------------------|------|--|---------------------------------|------------------|
| ECN 2478 first release | REVISIONS UNLESS OTHERWISE SPECIFIED TOLERANCES: ANGULAR ±2° INCH METRIC 3 PLACE ± ± 2 PLACE ± ± 1 PLACE ± ± DRAFT WHERE APPLICABLE MUST REMAIN WITHIN DIMENSIONS DESIGN DIMENSION <input checked="" type="checkbox"/> MM <input type="checkbox"/> IN. EQUIVALENT DIMENSION <input type="checkbox"/> MM <input type="checkbox"/> IN. IF TWO DIMENSIONS ARE GIVEN, THE UPPER IS THE DESIGN DIMENSION, LOWER IS SECONDARY | DRWG BY KN | SIGN | REVISE ONLY ON CAD SYSTEM CAD/CAM PROJECT NAME 85048000 s11 THIS DRAWING CONTAINS INFORMATION THAT IS PROPRIETARY TO MOLEX INC. & SHOULD NOT BE USED WITHOUT WRITTEN PERMISSION | | SH. REV. |
| | | CHK'D BY Ca | SIGN | TITLE 78 pos. Federleiste 78 pos. female connector DIN 41612, style M | | |
| A | LTR FOR PREVIOUS REVISIONS SEE REV. LIST | APP'D BY JB | SIGN | MOLEX MOLEX EUROPE SHEET NO. DATE 1 OF 2 97/04/11 | | |
| | | SCALE 2:1 | | PART NO. | DWG NO. SD-85048-0001 | SIZE B |

VIEW ON MATING SIDE

| | | | | | | | | | | | | | | | | | | | | | | | | | | | |
|----|---|---|---|---|---|---|---|---|---|---|---|---|---|---|---|---|---|---|---|---|---|---|---|---|---|---|---|
| U | A | A | A | A | A | A | A | A | A | A | A | A | A | A | A | A | A | A | A | A | A | A | A | A | A | A | A |
| 00 | A | A | A | A | A | A | A | A | A | A | A | A | A | A | A | A | A | A | A | A | A | A | A | A | A | A | A |
| 01 | A | A | A | A | A | A | A | A | A | A | A | A | A | A | A | A | A | A | A | A | A | A | A | A | A | A | A |

11
12
13
14
15
16
17
18
19
20
21
22
23
24
25
26
27
28
29
30
31
32

A = 78 STANDARD CONTACTS L-4,5

| Marking | Standard |
|-------------------|---|
| Performance level | G1/0 = Contact area level / Termination fin |
| Flux proof | no |
| Fixing clip | no |
| Dimensions | SD-85048-0001 sht.1 |
| Technical Data | PS-85042-0001 |

| | | | | | |
|--------|----------------|-------------------------|-------|-------|--|
| | | | | | |
| A | G1/0 | b4-29 | b4-29 | c4-29 | |
| Symbol | Perform. level | Contact position number | | | |

| | | | | | |
|---|--------|---|----------|-------------------------------------|--|
| ECN 2478 first release | | REVISIONS | | FOR PREVIOUS REVISIONS SEE MTR LIST | |
| | | LTR | | | |
| UNLESS OTHERWISE SPECIFIED TOLERANCES: ANGULAR $\pm 2^\circ$ | | DRWG BY | KN | SIGN | |
| 3 PLACE \pm | METRIC | CHK'D BY | | SIGN | |
| 2 PLACE \pm | | APP'D BY | CB | SIGN | |
| 1 PLACE \pm | | DRAFT WHERE APPLICABLE MUST REMAIN WITHIN DIMENSIONS | | | |
| DESIGN DIMENSION | | <input type="checkbox"/> MM | | | |
| EQUIVALENT DIMENSION | | <input type="checkbox"/> IN. | | | |
| TITLE: 78 pos. female connector acc.DIN 41612, style M contacts arrangement | | | | | |
| CAD/CAM PROJECT NAME | | THIS DRAWING CONTAINS INFORMATION THAT IS PROPRIETARY TO MOLEX, INC. & SHOULD NOT BE USED WITHOUT WRITTEN PERMISSION | | SHEET NO. DATE | |
| s31 | | 8504807 | | 1 OF 1 97/05/26 | |
| PART NO. | | DWG NO. | | SIZE | |
| 85048-0737 | | SD-85048-0737 | | A | |
| REVISE ONLY ON CAD SYSTEM | | | SH. REV. | | |