

## Excellent Integrated System Limited

Stocking Distributor

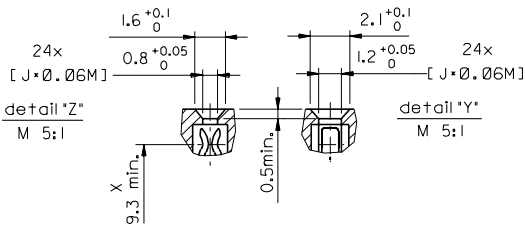
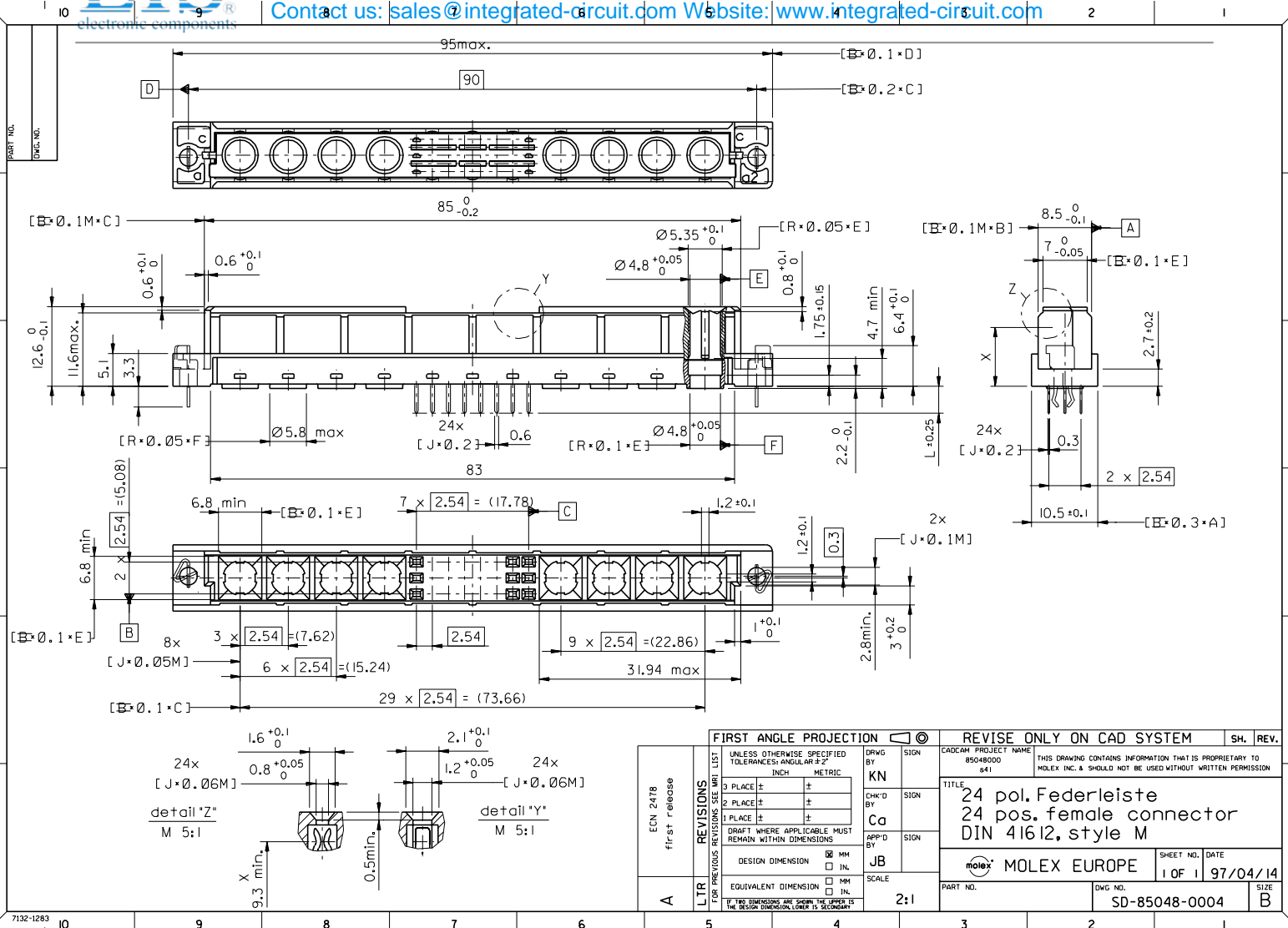
Click to view price, real time Inventory, Delivery & Lifecycle Information:

[Molex Connector Corporation](#)

[0850481275](#)

For any questions, you can email us directly:

[sales@integrated-circuit.com](mailto:sales@integrated-circuit.com)



ECN 2478	first release
A	LTR

FIRST ANGLE PROJECTION		REVISE ONLY ON CAD SYSTEM	
UNLESS OTHERWISE SPECIFIED TOLERANCES: ANGULAR ±2°	INCH	DRWG BY	SIGN
3 PLACE ±	METRIC	KN	
2 PLACE ±		CHK'D BY	SIGN
1 PLACE ±		Ca	
DRAFT WHERE APPLICABLE MUST REMAIN WITHIN DIMENSIONS		APP'D BY	SIGN
DESIGN DIMENSION	<input checked="" type="checkbox"/> MM	JB	
EQUIVALENT DIMENSION	<input type="checkbox"/> IN.	SCALE	
IF TWO DIMENSIONS ARE GIVEN, THE UPPER IS THE DESIGN DIMENSION, LOWER IS SECONDARY		2:1	

CAD/CAM PROJECT NAME	85048000	THIS DRAWING CONTAINS INFORMATION THAT IS PROPRIETARY TO MOLEX INC. & SHOULD NOT BE USED WITHOUT WRITTEN PERMISSION	SH. REV.
TITLE	24 pos. Federleiste 24 pos. female connector DIN 41612, style M		
MOLEX EUROPE		SHEET NO. DATE	
PART NO.		1 OF 1	97/04/14
DWG NO.		SD-85048-0004	SIZE
			B

