

Excellent Integrated System Limited

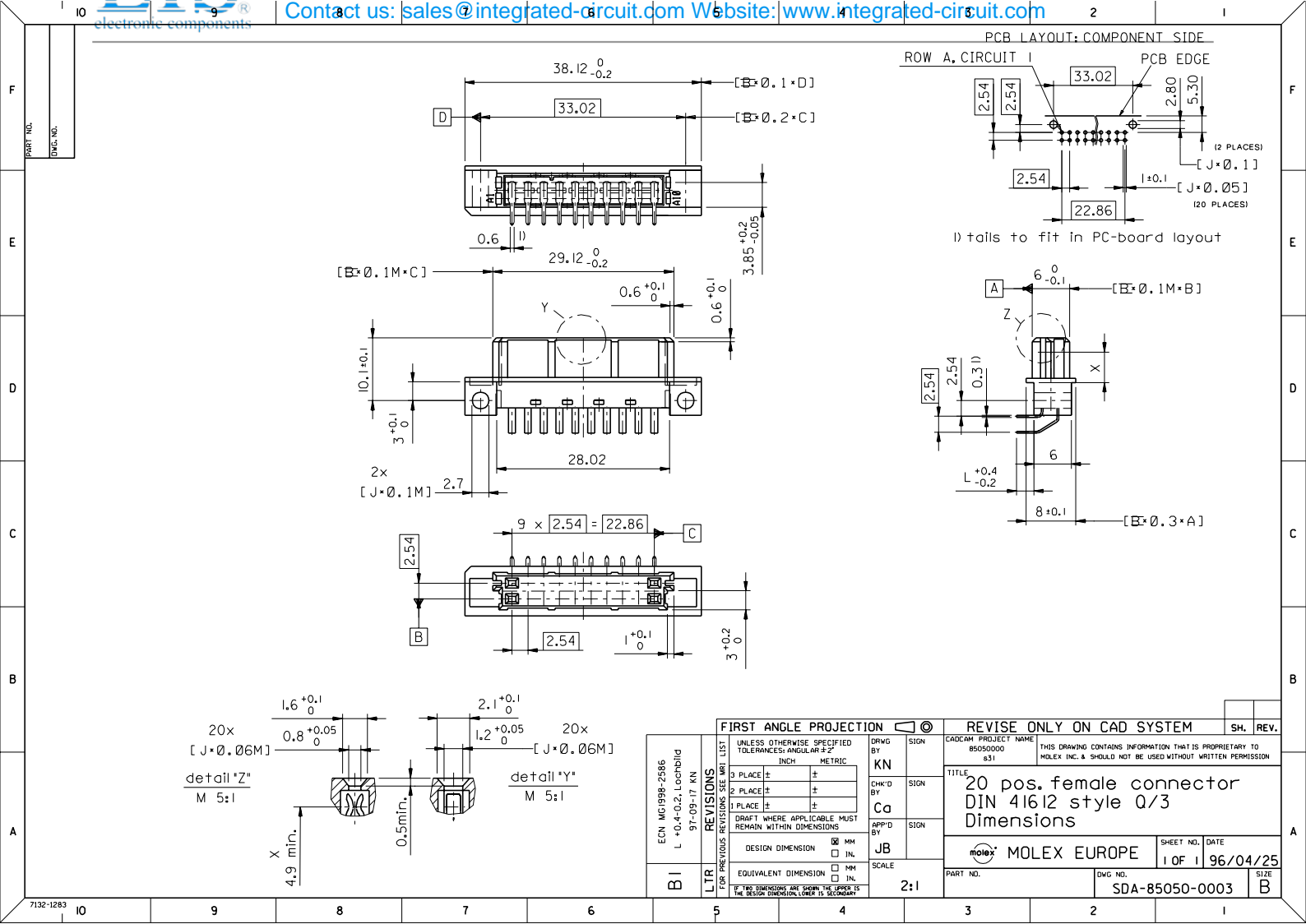
Stocking Distributor

Click to view price, real time Inventory, Delivery & Lifecycle Information:

[Molex Connector Corporation](#)
[0850500086](#)

For any questions, you can email us directly:

sales@integrated-circuit.com



FIRST ANGLE PROJECTION

REVISE ONLY ON CAD SYSTEM

SH. REV.

UNLESS OTHERWISE SPECIFIED TOLERANCES: ANGULAR ±2°

DRWG BY: KN

SIGN

CAD/CAM PROJECT NAME: 85050000 831 THIS DRAWING CONTAINS INFORMATION THAT IS PROPRIETARY TO MOLEX INC. & SHOULD NOT BE USED WITHOUT WRITTEN PERMISSION

3 PLACE ±

INCH

±

TITLE: 20 pos. female connector

2 PLACE ±

METRIC

±

DIN 41612 style Q/3

1 PLACE ±

±

±

Dimensions

DESIGN DIMENSION

MM

INL

MOLEX EUROPE SHEET NO. DATE

EQUIVALENT DIMENSION

MM

INL

1 OF 1 96/04/25

IF TWO DIMENSIONS ARE GIVEN, THE UPPER IS THE DESIGN DIMENSION, LOWER IS SECONDARY

SCALE: 2:1

PART NO.

SDA-85050-0003 SIZE B

ECN	MG 998-2386
L	+0.4/-0.2, Lockfiled
9T-05-17	KN
REVISIONS	SEE MR. LIST
LTR	FOR PREVIOUS REVISIONS

