

## Excellent Integrated System Limited

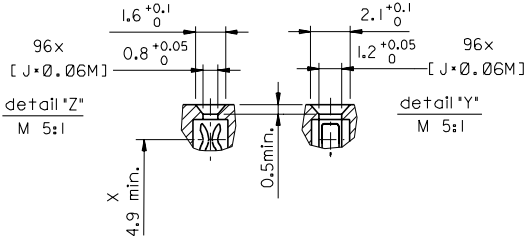
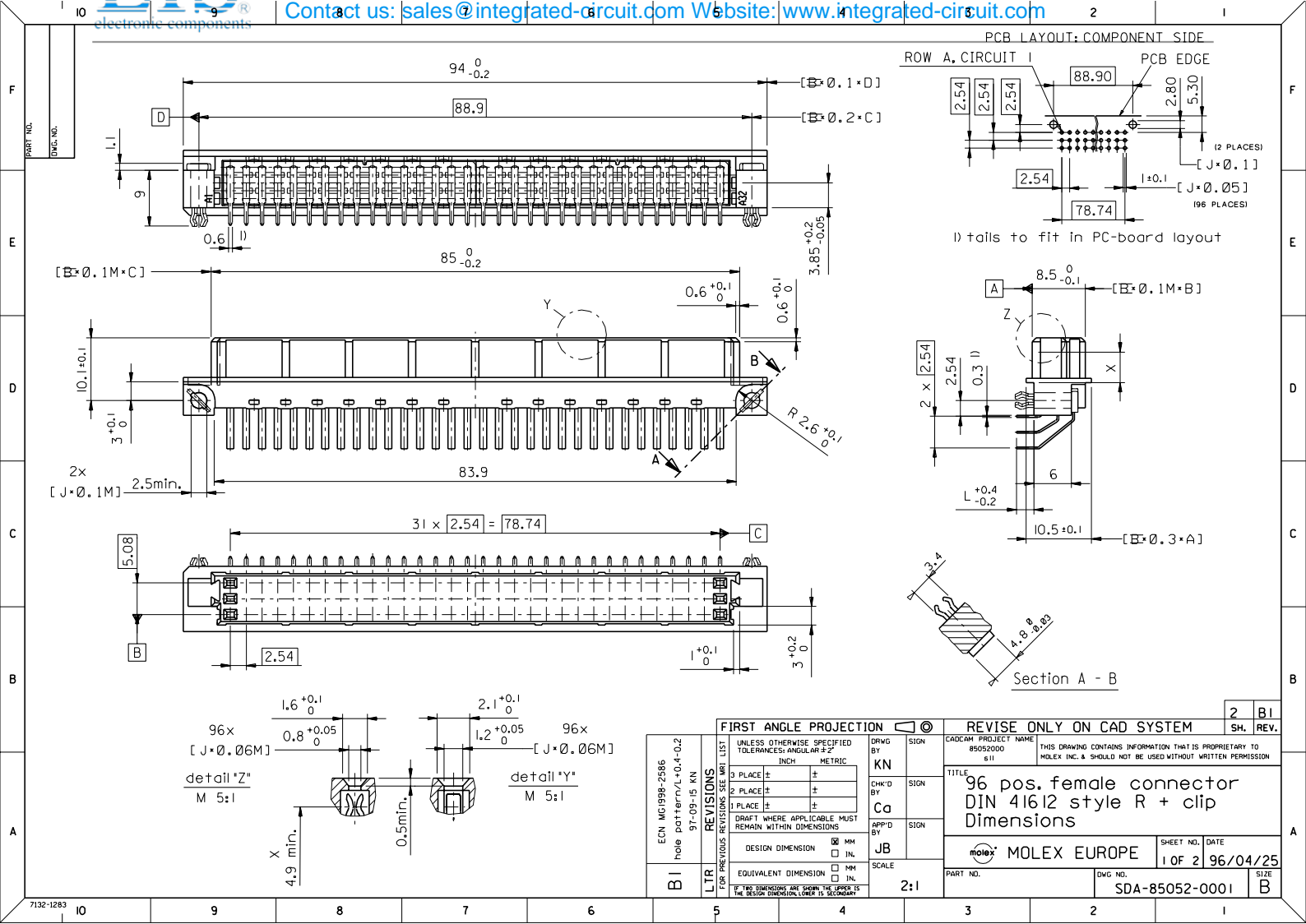
Stocking Distributor

Click to view price, real time Inventory, Delivery & Lifecycle Information:

[Molex Connector Corporation](#)  
[0850520036](#)

For any questions, you can email us directly:

[sales@integrated-circuit.com](mailto:sales@integrated-circuit.com)



| FIRST ANGLE PROJECTION |  | UNLESS OTHERWISE SPECIFIED TOLERANCES: ANGULAR ±2° |        |
|------------------------|--|--|--------|
|                        |  | INCH   | METRIC |
| 3 PLACE ±              |  | ±  | ±      |
| 2 PLACE ±              |  | ±  | ±      |
| 1 PLACE ±              |  | ±  | ±      |

DRAFT WHERE APPLICABLE MUST REMAIN WITHIN DIMENSIONS

DESIGN DIMENSION  MM  INL

EQUIVALENT DIMENSION  MM  INL

IF TWO DIMENSIONS ARE GIVEN, THE UPPER IS THE DESIGN DIMENSION, LOWER IS SECONDARY

| REVISE ONLY ON CAD SYSTEM   |    | SH. REV.  |  |
|---|----|---|--|
| 2   | BI |   |  |
| CAD/CAM PROJECT NAME: 85052000 s11                                  |    | THIS DRAWING CONTAINS INFORMATION THAT IS PROPRIETARY TO MOLEX INC. & SHOULD NOT BE USED WITHOUT WRITTEN PERMISSION |  |
| TITLE: 96 pos. female connector DIN 41612 style R + clip Dimensions |    |   |  |
| MOLEX EUROPE  |    | SHEET NO. DATE: 1 OF 2 96/04/25   |  |
| PART NO. SDA-85052-0001   |    | DWG. NO. B  |  |

| ECN | DESCRIPTION                           | DATE     | BY |
|-----|---------------------------------------|----------|----|
| B1  | ECN MG998-2586 hole pattern L=0.4-0.2 | 97-05-15 | KN |

| DATE     | DESCRIPTION | BY |
|----------|-------------|----|
| 97-05-15 | REVISED     | KN |

