

## Excellent Integrated System Limited

Stocking Distributor

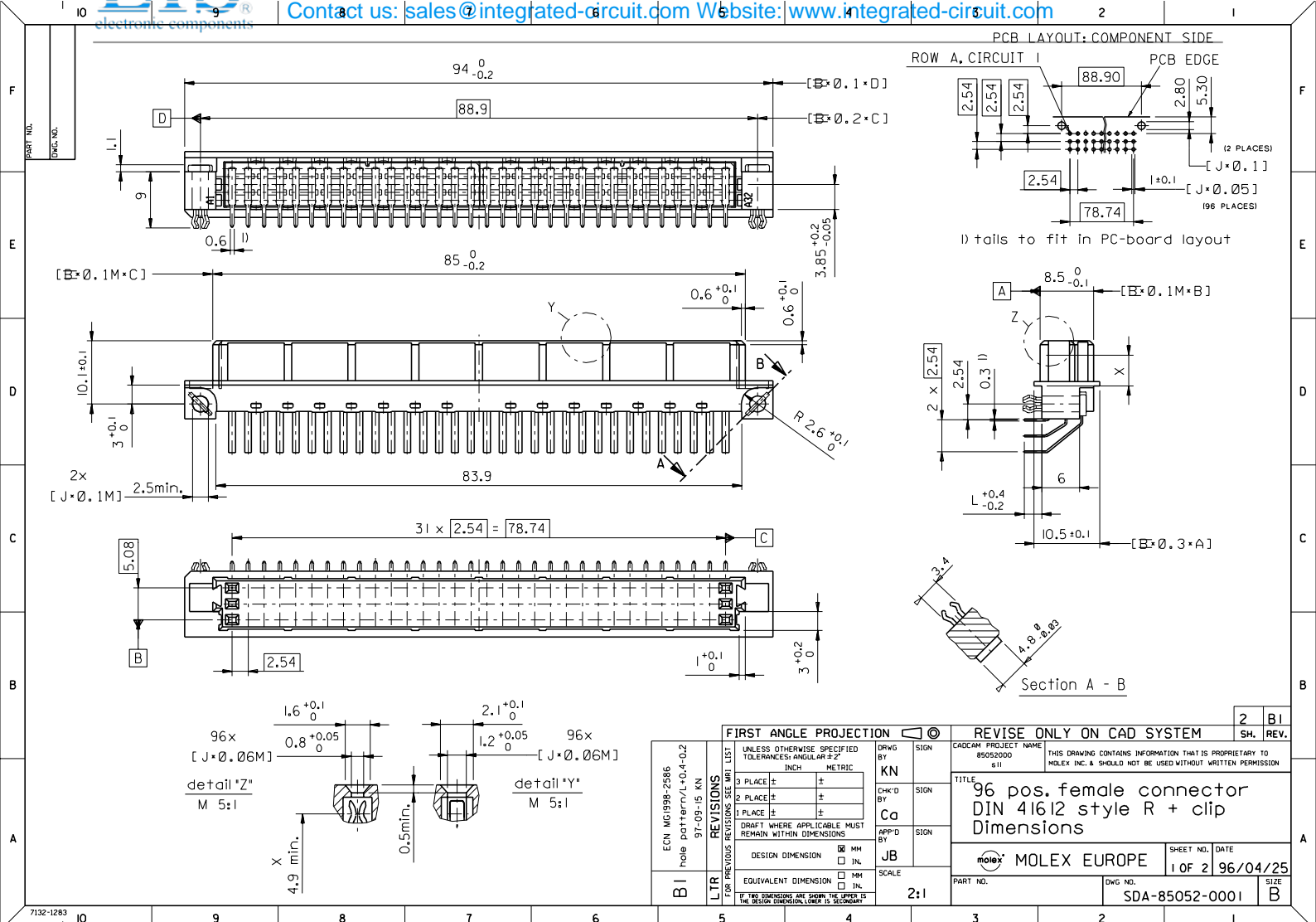
Click to view price, real time Inventory, Delivery & Lifecycle Information:

[Molex Connector Corporation](#)

[0850520139](#)

For any questions, you can email us directly:

[sales@integrated-circuit.com](mailto:sales@integrated-circuit.com)



VIEW ON MATING SIDE

C	C	C	C	C	C	C	C	C	C	C	C	C	C	C	C	C	C	C	C
A	A	A	A	A	A	A	A	A	A	A	A	A	A	A	A	A	A	A	A
8	7	6	5	4	3	2	1	0	9	8	7	6	5	4	3	2	1	0	9

A = 32 CONTACTS L=3,4  
 C = 32 CONTACTS L=3,4  
 S = 64 TOTAL NUMBER OF CONTACTS

Marking	Standard
Performance level	G2/0 = Contact area level2 / Termination fin
Flux proof	no
Fixing clip	no
Dimensions	SDA-85052-0001 sht.1
Technical Data	PS-85052-0001

C	G2/0	cl-32
A	G2/0	al-32
Contact symbol	Perform.	Contact position number

REVISIONS see ECN No. 2154 first release	FOR PREVIOUS REVISIONS SEE MRI LIST		DRWG SIGN		REVISIONS		REVISE ONLY ON CAD SYSTEM		SH. REV.		
	UNLESS OTHERWISE SPECIFIED TOLERANCES: ANGULAR ±2'	INCH	METRIC	BY	CHK'D BY	CAD/CAM PROJECT NAME	THIS DRAWING CONTAINS INFORMATION THAT IS PROPRIETARY TO MOLEX, INC. & SHOULD NOT BE USED WITHOUT WRITTEN PERMISSION				
3 PLACE ± .	±	±	Cc	Cc	KN	TITLE	96 pos. female connector acc. DIN 41612 style R contacts arrangement				
2 PLACE ± .	±	±				MOLEX	MOLEX EUROPE				
1 PLACE ± .	±	±				SHEET NO. DATE		1 OF 1 96/06/14			
DRAFT WHERE APPLICABLE MUST REMAIN WITHIN DIMENSIONS		DESIGN DIMENSION		SCALE		PART NO.		SDA-85052-0139			
DESIGN DIMENSION		EQUIVALENT DIMENSION		SCALE		DWG NO.		85052-0139			
DESIGN DIMENSION		EQUIVALENT DIMENSION		SCALE		SIZE		A			
DESIGN DIMENSION		EQUIVALENT DIMENSION		SCALE		PART NO.		85052-0139			
DESIGN DIMENSION		EQUIVALENT DIMENSION		SCALE		SIZE		A			