

## Excellent Integrated System Limited

Stocking Distributor

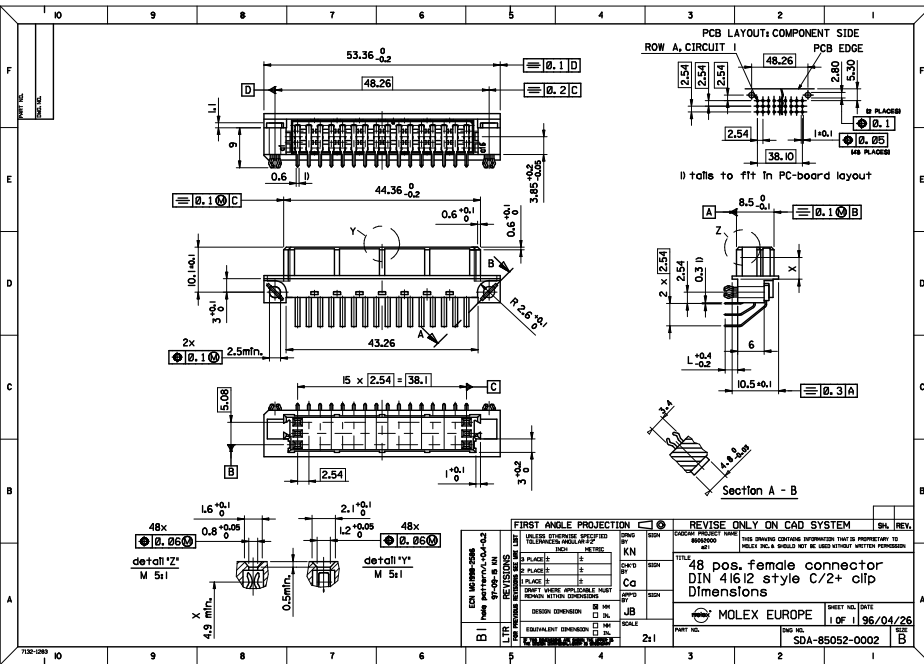
Click to view price, real time Inventory, Delivery & Lifecycle Information:

[Molex Connector Corporation](#)

[0850520622](#)

For any questions, you can email us directly:

[sales@integrated-circuit.com](mailto:sales@integrated-circuit.com)



| SHT. 1 OF                 |      | MRI -    |       |                |                            |
|---------------------------|------|----------|-------|----------------|----------------------------|
| MODIFICATION RECORD INDEX |      |          |       |                |                            |
| ECN                       | ISS. | DATE     | INIT. | SHTS. AFFECTED | DESCRIPTION OF MOD.        |
| 2213                      | A    | 96.04.26 | KN    | I              | first release              |
| 2253                      | A1   | 96.09.25 | KN    | I              | Flanschaenderung           |
| 2525                      | B    | 97.06.21 | KN    | I              | Toleranz Mass L In +- 0.2  |
| 2586                      | B1   | 97.09.15 | KN    | I              | hole pattern, Tol. L +-0.2 |

LEVEL CHART

|    |    |    |                         |
|----|----|----|-------------------------|
| 1  | 17 | 33 | 49                      |
| 2  | 18 | 34 | 50                      |
| 3  | 19 | 35 | 51 LEVEL INDEX          |
| 4  | 20 | 36 | 52 RESERVED             |
| 5  | 21 | 37 | 53 RESERVED             |
| 6  | 22 | 38 | 54 Inspection Balloons  |
| 7  | 23 | 39 | 55 DIMENSIONS           |
| 8  | 24 | 40 | 56 TABLES/CHARTS        |
| 9  | 25 | 41 | 57 REVISION TEXT & MRI  |
| 10 | 26 | 42 | 58 Notes/text - English |
| 11 | 27 | 43 | 59 Bill of materials    |
| 12 | 28 | 44 | 60 notes/text - german  |
| 13 | 29 | 45 | 61                      |
| 14 | 30 | 46 | 62 notes/text - french  |
| 15 | 31 | 47 | 63 RESERVED             |
| 16 | 32 | 48 |                         |

