

## Excellent Integrated System Limited

Stocking Distributor

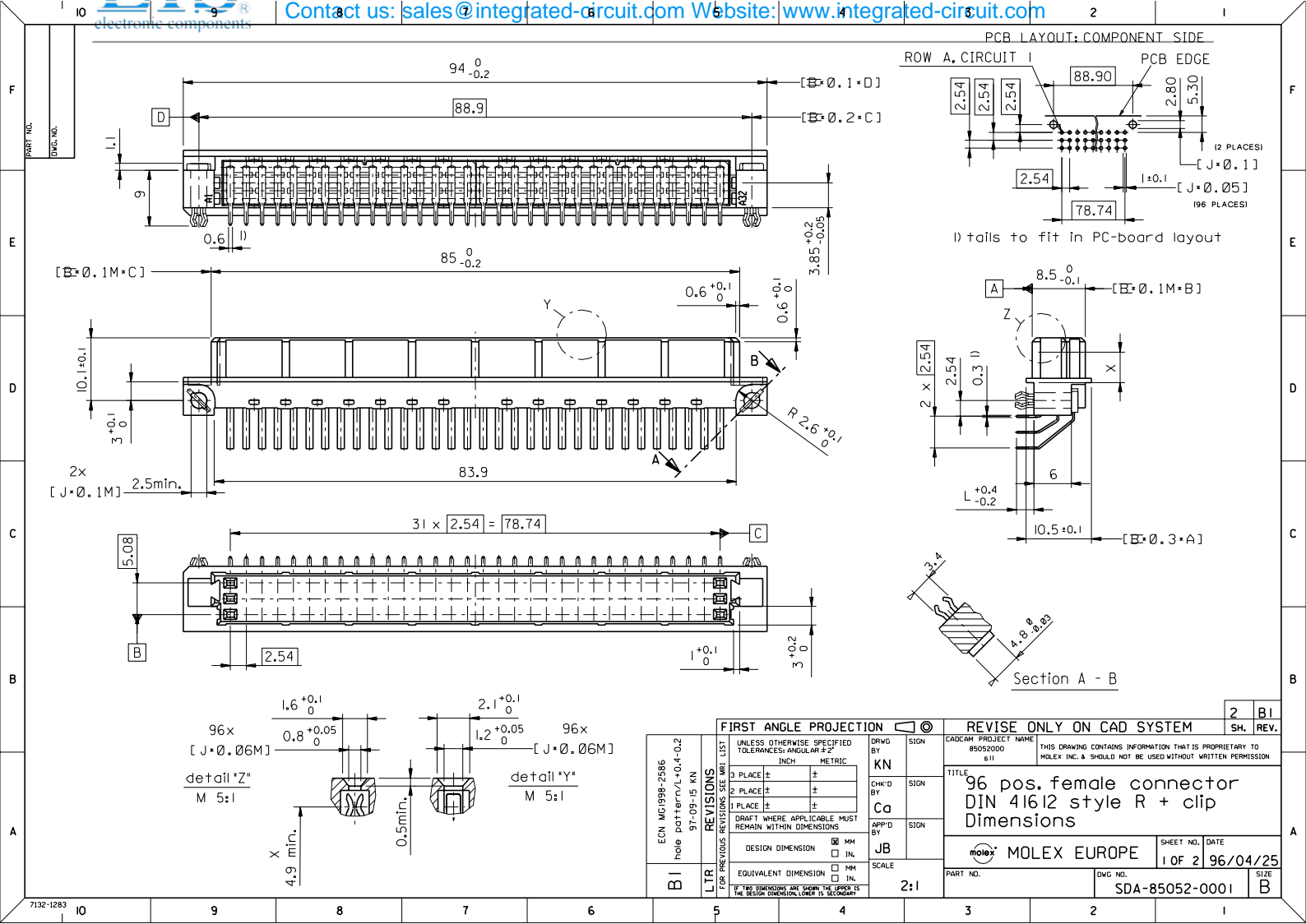
Click to view price, real time Inventory, Delivery & Lifecycle Information:

[Molex Connector Corporation](#)

[0850520658](#)

For any questions, you can email us directly:

[sales@integrated-circuit.com](mailto:sales@integrated-circuit.com)



VIEW ON MATING SIDE

C	C	C	C	C	C	C	C	C	C	C	C	C	C	C	C	C	C	C	C
A	A	A	A	A	A	A	A	A	A	A	A	A	A	A	A	A	A	A	A

A = 16 CONTACTS L=2.8  
C = 16 CONTACTS L=2.8

S = 32 TOTAL NUMBER OF CONTACTS

Marking	Standard
Performance level	G2/0 = Contact area level2 / Termination fin
Flux proof	no
Fixing clip	yes
Dimensions	SDA-85052-0001 sht.1
Technical Data	PS-85052-0001

C	G2/0	c2,4,6...32
A	G2/0	d2,4,6...32
Contact symbol	Perform.	Contact position number

REVISIONS see ECN No. 2154 first release	REVISIONS FOR PREVIOUS REVISIONS SEE MRL LIST		UNLESS OTHERWISE SPECIFIED TOLERANCES: ANGULAR ±2° INCH METRIC 3 PLACE ± . 2 PLACE ± . 1 PLACE ± . DRAFT WHERE APPLICABLE MUST REMAIN WITHIN DIMENSIONS	DRWG BY Cc CHK'D BY KN APP'D BY	SIGN SIGN SIGN	CAD/CAM PROJECT NAME S8505206 S51 THIS DRAWING CONTAINS INFORMATION THAT IS PROPRIETARY TO MOLEX INC. & SHOULD NOT BE USED WITHOUT WRITTEN PERMISSION	REVISE ONLY ON CAD SYSTEM SH. REV.
	TITLE 96 pos. female connector acc. DIN 41612 style R contacts arrangement	SHEET NO. DATE MOLEX EUROPE 1 OF 1 96/06/14	PART NO. DWG NO. 85052-0658 SDA-85052-0658	SCALE EQUIVALENT DIMENSION DESIGN DIMENSION IN. IN. MM MM	SIZE A		