

## Excellent Integrated System Limited

Stocking Distributor

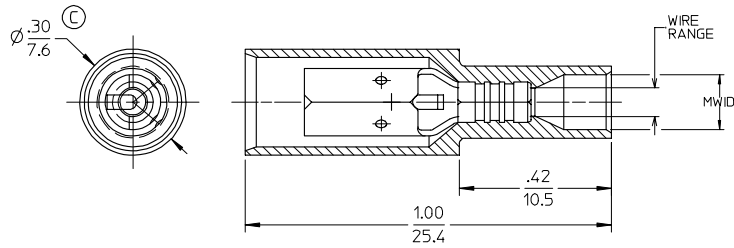
Click to view price, real time Inventory, Delivery & Lifecycle Information:

[Molex Connector Corporation](#)  
[0190380007](#)

For any questions, you can email us directly:

[sales@integrated-circuit.com](mailto:sales@integrated-circuit.com)

10	9	8	7	6	5	4	3	2	19038
MATERIAL NO. NYLON	ENGINEERING NO. NYLON	INSULATION NYLON COLOR	MATERIAL NO. PVC	ENGINEERING NO. PVC	INSULATION PVC COLOR	WIRE RANGE AWG / MM <sup>2</sup>	MWD	FITS MALE PLUG DIA.	
190380037	BRA-2156N	LIGHT RED	190380001	BRA-2156	RED	22-18 / 0.25-1.3	.128/(3.25)	.156/(3.96)	
190380006	BRA-2180N	LIGHT RED	190380004	BRA-2180	RED	22-18 / 0.25-1.3	.128/(3.25)	.180/(4.57)	
190380009	BRB-2156N	LIGHT BLUE	190380007	BRB-2156	DARK BLUE	16-14 / 1.0-2.6	.150/(3.81)	.156/(3.96)	
190380013	BRB-2180N	LIGHT BLUE	190380011	BRB-2180	DARK BLUE	16-14 / 1.0-2.6	.150/(3.81)	.180/(4.57)	



SALES DRAWING

NOTE(S):

1. RECEPTACLE MATERIAL: .016(0.41) THK BRASS
2. RECEPTACLE FINISH: TIN PLATING
3. MWD = MAXIMUM WIRE INSULATION DIAMETER
4. ALL COMPONENTS ARE ROHS COMPLIANT.

REVISE DIM. EC NO. ETC2006-0450 DRAWN: CYRIL 2006/05/23 CHKD: JIMACNEIL 2006/05/24 APPR: RDEROSS 2006/05/24	QUALITY SYMBOLS ▽.0 ▽.0	GENERAL TOLERANCES (UNLESS SPECIFIED)		SCALE 5:1	DESIGN UNITS INCH	THIRD ANGLE PROJECTION	REVISE ON CAD ONLY	
		4 PLACES 3 PLACES 2 PLACES 1 PLACE	mm	INCH	DIMENSION STYLE IN/MM		TITLE FULLY INSULATED INSULK FEMALE BULLET RECEPTACLE	
			±.005	±.005	DRAWN BY DAY	DATE 97/07/07	MATERIAL NO. SEE CHART	
			±0.13 ±0.25	±.01 ±.01	CHECKED BY RWD	DATE 97/07/07	DOCUMENT NO. SD-19038-001	SHEET NO. 1 OF 1
DRAFT WHERE APPLICABLE MUST REMAIN WITHIN DIMENSIONS		ANGULAR ±1/2°		THIS DRAWING CONTAINS INFORMATION THAT IS PROPRIETARY TO MOLEX INCORPORATED AND SHOULD NOT BE USED WITHOUT WRITTEN PERMISSION				