

Excellent Integrated System Limited

Stocking Distributor

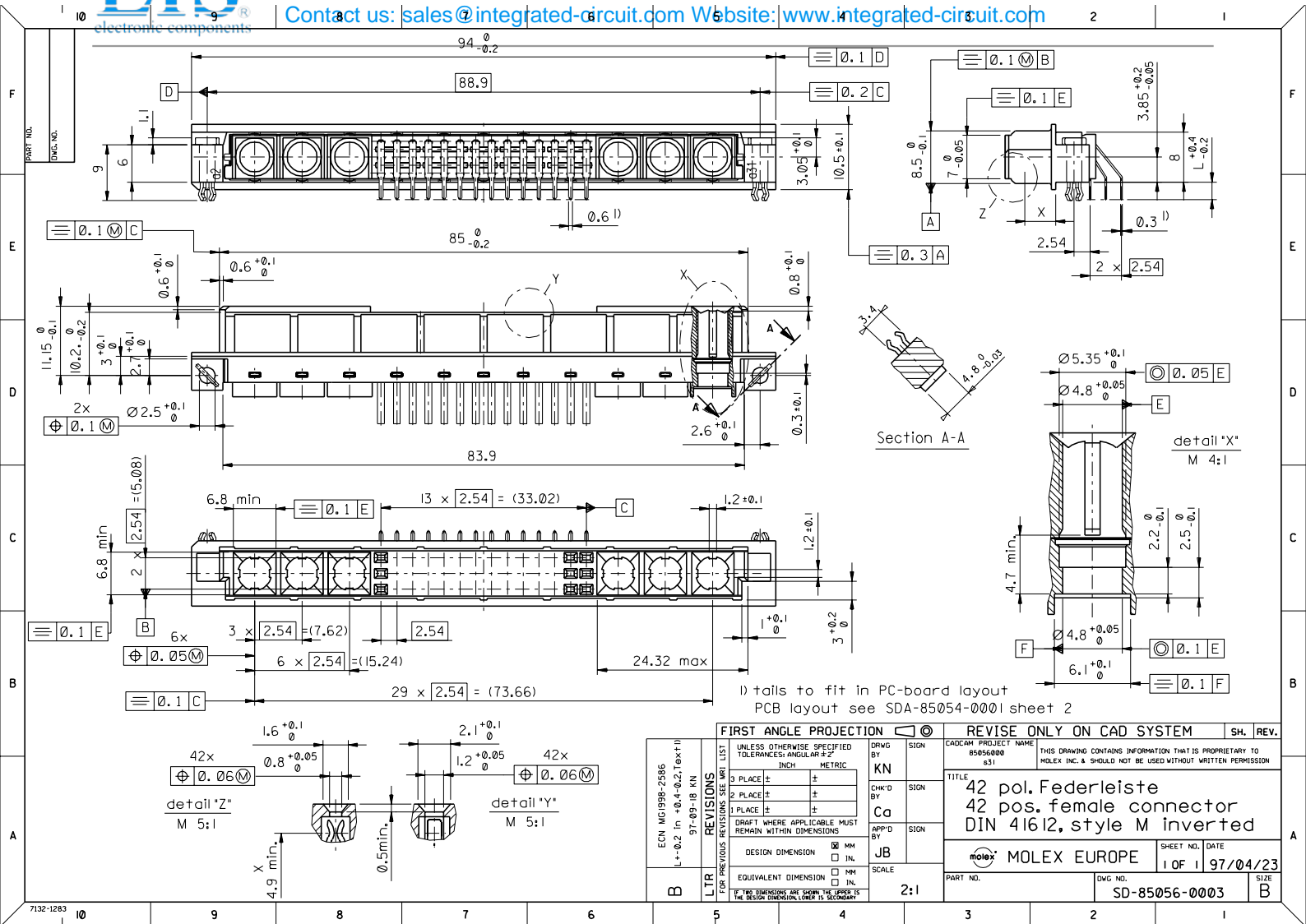
Click to view price, real time Inventory, Delivery & Lifecycle Information:

[Molex Connector Corporation](#)

[0850560244](#)

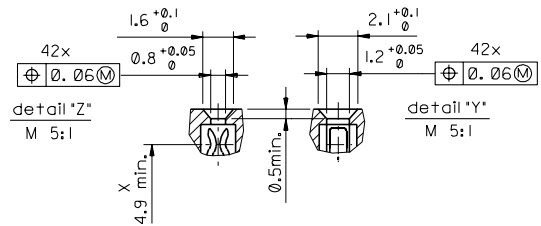
For any questions, you can email us directly:

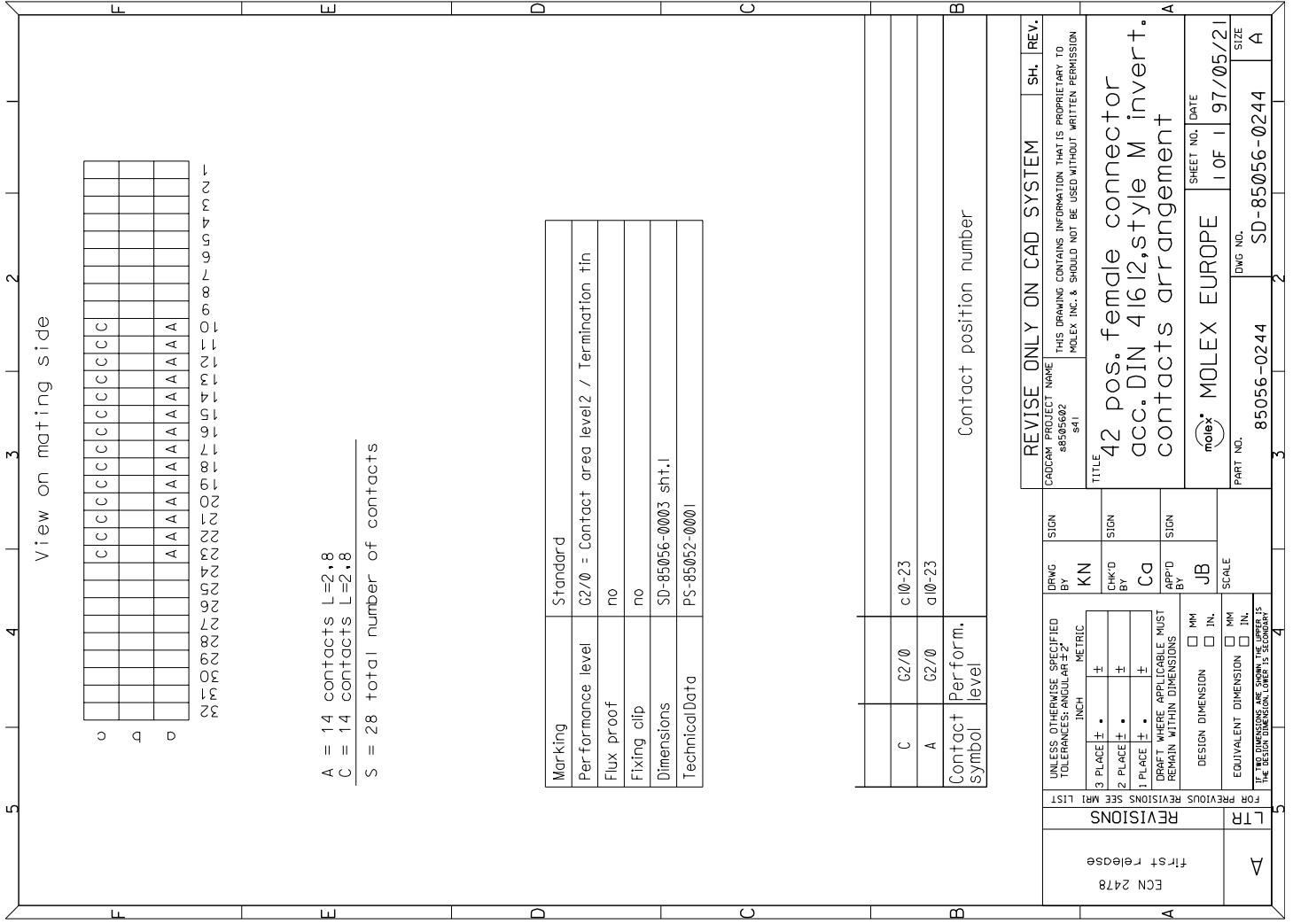
sales@integrated-circuit.com



1) tails to fit in PC-board layout
PCB layout see SDA-85054-0001 sheet 2

FIRST ANGLE PROJECTION		REVISE ONLY ON CAD SYSTEM		SH.	REV.
UNLESS OTHERWISE SPECIFIED TOLERANCES: ANGULAR ±2°	DRWG BY	CAD/CAM PROJECT NAME			
INCH	KN	85056000			
METRIC	SIGN	831			
3 PLACE ±	CHK'D BY	THIS DRAWING CONTAINS INFORMATION THAT IS PROPRIETARY TO MOLEX INC. & SHOULD NOT BE USED WITHOUT WRITTEN PERMISSION			
2 PLACE ±	Ca	TITLE			
1 PLACE ±	SIGN	42 pos. Federleiste			
0 PLACE ±	APP'D BY	42 pos. female connector			
	JB	DIN 41612, style M inverted			
DESIGN DIMENSION	SIGN	MOLEX MOLEX EUROPE		SHEET NO.	DATE
<input type="checkbox"/> MM				1 OF 1	97/04/23
<input type="checkbox"/> INL	SCALE	PART NO.		SIZE	
EQUIVALENT DIMENSION	2:1	SD-85056-0003		B	
<input type="checkbox"/> MM					
<input type="checkbox"/> INL					
IF TWO DIMENSIONS ARE SHOWN, THE UPPER IS THE DESIGN DIMENSION, LOWER IS SECONDARY					





ECN 2478 first release	REVISIONS		FOR PREVIOUS REVISIONS SEE MRL LIST	
	LTR	Δ	INCH	MM
DESIGN DIMENSION	<input type="checkbox"/> MM	<input type="checkbox"/> IN.	EQUIVALENT DIMENSION	<input type="checkbox"/> MM
UNLESS OTHERWISE SPECIFIED TOLERANCES: ANGULAR ±2°	3 PLACE ±	±	DESIGN DIMENSION	<input type="checkbox"/> MM
	2 PLACE ±	±	EQUIVALENT DIMENSION	<input type="checkbox"/> IN.
	1 PLACE ±	±	DRAFT WHERE APPLICABLE MUST REMAIN WITHIN DIMENSIONS	<input type="checkbox"/> IN.
UNLESS OTHERWISE SPECIFIED TOLERANCES: ANGULAR ±2°	3 PLACE ±	±	DESIGN DIMENSION	<input type="checkbox"/> MM
	2 PLACE ±	±	EQUIVALENT DIMENSION	<input type="checkbox"/> IN.
	1 PLACE ±	±	DRAFT WHERE APPLICABLE MUST REMAIN WITHIN DIMENSIONS	<input type="checkbox"/> IN.
DRWG BY	KN	SIGN	SCALE	SCALE
CHK'D BY	Ca	SIGN	APP'D BY	JB
REVISE ONLY ON CAD SYSTEM		SH.	REV.	
CAD/DWG PROJECT NAME	88505602 s41		THIS DRAWING CONTAINS INFORMATION THAT IS PROPRIETARY TO MOLEX INC. & SHOULD NOT BE USED WITHOUT WRITTEN PERMISSION	
TITLE		42 pos. female connector acc. DIN 41612, style M invert. contacts arrangement		
MOLEX EUROPE		SHEET NO.	DATE	
85056-0244		1 OF 1	97/05/21	
PART NO.		DWG NO.		SIZE
85056-0244		SD-85056-0244		A