

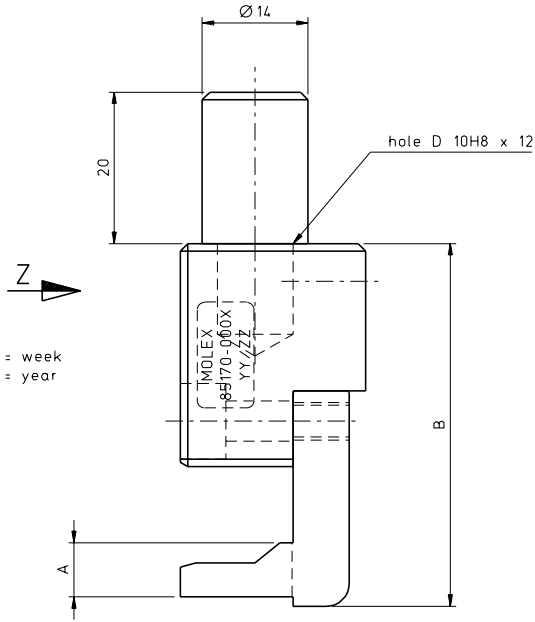
Excellent Integrated System Limited

Stocking Distributor

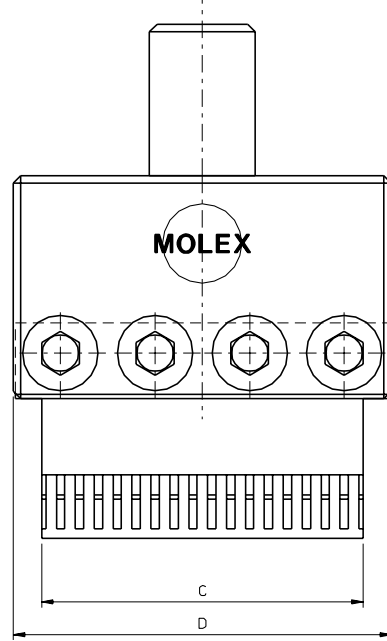
Click to view price, real time Inventory, Delivery & Lifecycle Information:

[Molex Connector Corporation](#)
[0851700001](#)

For any questions, you can email us directly:
sales@integrated-circuit.com



View Z



Mat. Nr.	Description	A	B	C	D
85170-0001	Press tool Vertical female 4SU/22	10.7	71.45	92.5	100
85170-0002	Press tool Vertical female 4SU/18.5	7.2	67.95	92.5	100
85170-0003	Press tool Vertical female 2SU/22	10.7	51.45	42.5	50
85170-0004	Press tool Vertical female 2SU/18.5	7.2	47.95	42.5	50
85170-0005	Press tool Vertical female 1SU/22	10.7	51.45	17.5	25
85170-0006	Press tool Vertical female 1SU/18.5	7.2	47.95	17.5	25

EC NO. 2502
 DRWN: T. Betz 4/6/97
 CHK: / / /
 APPR: / / /

DESCRIPTION
 MAJOR
 CRITICAL

GENERAL TOLERANCES: (UNLESS SPECIFIED)	
	mm
4 PLACES	±0.1
3 PLACES	±0.2
2 PLACES	±0.3
1 PLACE	±0.4

SCALE: 2:1
 DESIGN UNITS: mm (checked), INCH
 THIRD ANGLE PROJECTION
 DRAWN BY & DATE: T.B. 4/10/95
 CHECKED BY & DATE: / /
 APPROVED BY & DATE: / /

DIMENSIONS: mm (checked), INCH, mm ONLY
 SHT REV
 REVISE ON CAD ONLY

TITLE: Omnigridd Press Tool Vertical Female

MOLEX MOLEX INCORPORATED

CAD FILENAME: 85170001.S01
 MATERIAL NO.: see chart SD
 DRAWING NO.: -85170-001
 SHEET NO.: 1 OF 1
 SIZE: B