

Excellent Integrated System Limited

Stocking Distributor

Click to view price, real time Inventory, Delivery & Lifecycle Information:

[Molex Connector Corporation](#)
[19115-0035](#)

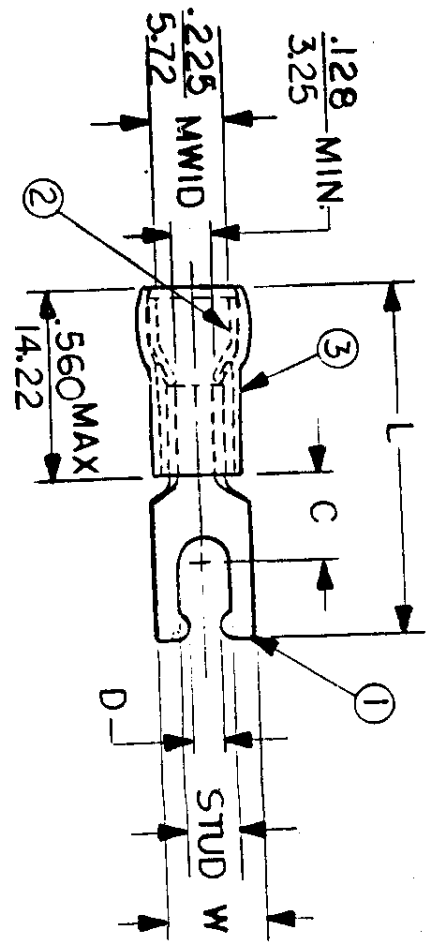
For any questions, you can email us directly:

sales@integrated-circuit.com



NOTES:

- ① MAT'L: COPPER (STOCK TKN. $\frac{.040}{.102}$)
 - PLATING: ELECTRO TIN (.0003 MIN)
 - ② TIN-PLATED BRASS FUNNEL FERRULE
 - ③ NYLON INSULATION (COLOR CODED YELLOW)
- STUD SIZES: ($\pm .005$)
- 02 = .094
 04 = .119
 06 = .146
 08 = .173
 10 = .198
 14 = .265
 56 = .328
 38 = .390
- "UL" LISTING #E32244
 "CSA" LISTING #18689
- WIRE SIZE: 12 - 10 AWG
 4.0 - 6.0 MM²



ALL DIMENSIONS = $\frac{\text{INCHES}}{\text{MM}}$ (MWID) = DENOTES MAXIMUM WIRE INSULATION DIAMETER

PART NUMBER	"W"	"C"	"L"	"D"	STUD SIZES
	$\pm .010$	MIN.	MAX.	$\pm .005$	AVAILABLE STUD SIZES
C-8196-	$\frac{.290}{7.37}$	$\frac{.305}{7.75}$	$\frac{1.112}{28.24}$	$\frac{.111}{2.82}$	06
C-8197-	$\frac{.320}{8.13}$	$\frac{.305}{7.75}$	$\frac{1.140}{28.96}$	$\frac{.137}{3.48}$	08
C-8198-	$\frac{.320}{8.13}$	$\frac{.305}{7.75}$	$\frac{1.160}{29.46}$	$\frac{.163}{4.14}$	10
C-8199-	$\frac{.415}{10.54}$	$\frac{.375}{9.53}$	$\frac{1.286}{32.66}$	$\frac{.223}{5.66}$	14

DIMENSIONAL TOLERANCES UNLESS OTHERWISE SPECIFIED

REFERENCE SCALE: NTS

DATE

TITLE:

SNAP SPADE TONGUE TERMINAL

AVIKRIMP 800-SERIES



DWG. NO. A CUSTOMER DWG

FILE NO. C-CD-805-01

FRAC. DEC. ANG. CHKD. BY: GZ APPRD. BY:

DRWN. BY: JJ 11-13-84

11-26-84