

Excellent Integrated System Limited

Stocking Distributor

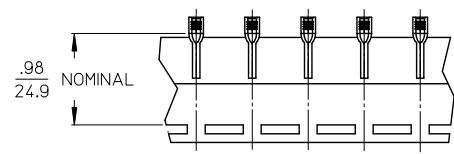
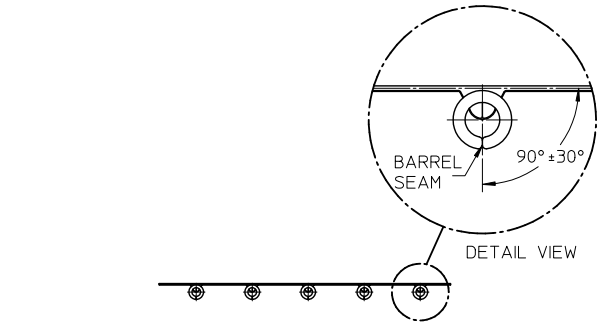
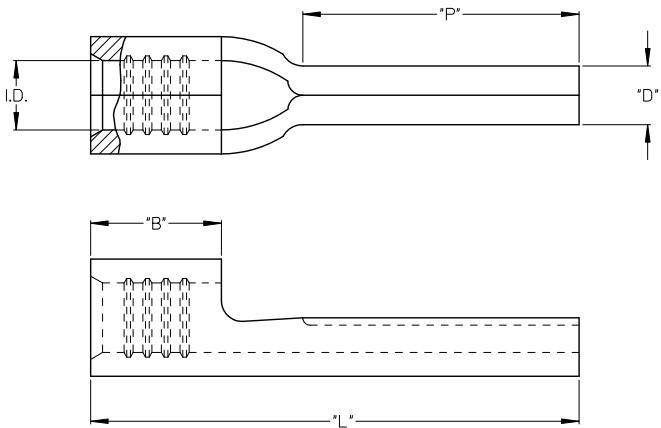
Click to view price, real time Inventory, Delivery & Lifecycle Information:

[Molex Connector Corporation](#)
[0192110001](#)

For any questions, you can email us directly:

sales@integrated-circuit.com

| 10 | 9 | 8 | 7 | 6 | 5 | 4 | 3 | 2 | 1 |
|--------------------------|-----------------------------|---------------------------|------------------------------|-------|---------------|------------|-----------|-----------|-----------------|
| MATERIAL NO. LOOSE PIECE | ENGINEERING NO. LOOSE PIECE | MATERIAL NO. TAPE MOUNTED | ENGINEERING NO. TAPE MOUNTED | AWG | "I.D." MIN | "B" MIN | "L" MAX | "P" MIN | "D" ± .01 / 0.3 |
| 192110003 | WP-1218 | 192110004 | WP-1218 T | 22-18 | .054/1.37(G2) | .165/ 4.19 | .68/ 17.3 | .35/ 8.9 | .078/ 1.98 |
| 192110005 | WP-1614 | 192110006 | WP-1614 T | 16-14 | .081/2.06 | .165/ 4.19 | .68/ 17.3 | .35/ 8.9 | .078/ 1.98 |
| 192110001 | WP-1210 | 192110002 | WP-1210 T | 12-10 | .128/3.25 | .230/ 5.84 | .82/ 20.8 | .41/ 10.4 | .107/ 2.72 |



PARTS ON TAPE

SALES DRAWING

NOTES:

1. MATERIAL: COPPER
2. FINISH: ELECTRO-TIN PLATING
3. PARTS ARE ROHS COMPLIANT.

| | | | | | | | | | |
|----------------------------------------------------------------------------------------------------|-------------------------------|---------------------------------------|---------------------------|-----------------------|-----------------|-----------------------------------|-------------------|------------------------|--|
| ID TOLERANCE 22-18 EC NO: 2010/11/17 DRW: JMACNEIL CHKD: JMACNEIL APPR: JMACNEIL GZ | QUALITY SYMBOLS ▽=0 ▽=0 | GENERAL TOLERANCES (UNLESS SPECIFIED) | | DIMENSION STYLE IN/MM | | SCALE | DESIGN UNITS INCH | THIRD ANGLE PROJECTION | |
| | | 4 PLACES ± --- ± --- | 3 PLACES ± --- ± --- | DRAWN BY B. ENDERLE | DATE 02/14/02 | TITLE KRIPTITE WIRE PIN TERMINALS | | | |
| | | 2 PLACES ± --- ± --- | 1 PLACE ± --- ± --- | CHECKED BY H. BIETZEL | DATE 02/14/02 | 22-18, 16-14, 12-10 AWG | | | |
| | | ANGULAR ± --- ° | | APPROVED BY JMACNEIL | DATE 2010/03/18 | Molex MOLEX INCORPORATED | | | |
| DRAFT WHERE APPLICABLE MUST REMAIN WITHIN DIMENSIONS | | MATERIAL NO. SEE CHART | DOCUMENT NO. SD-19211-002 | SHEET NO. 1 OF 1 | | | | | |