

## **Excellent Integrated System Limited**

Stocking Distributor

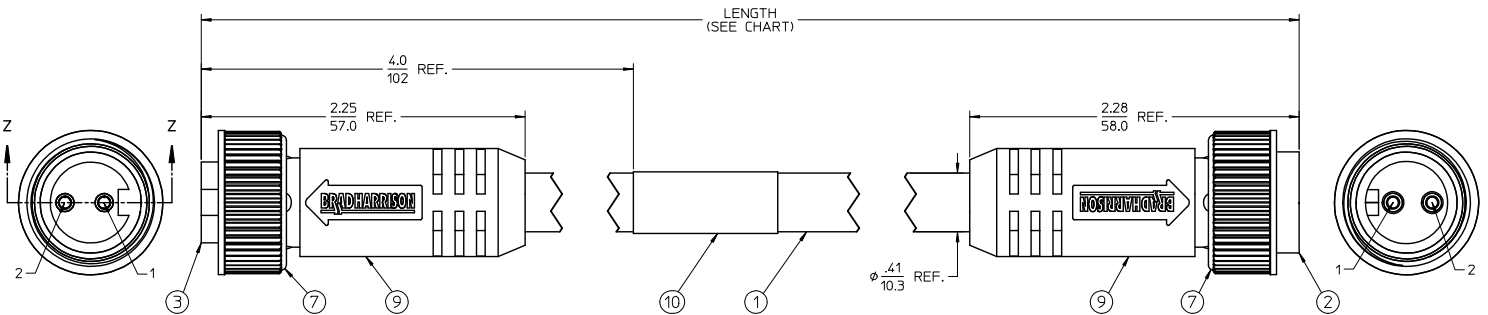
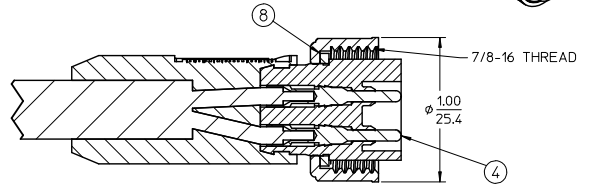
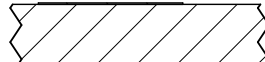
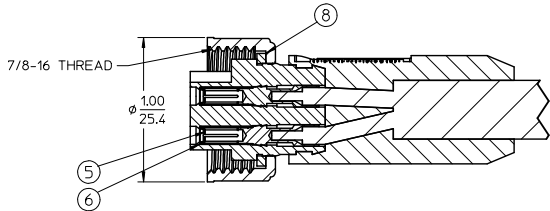
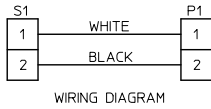
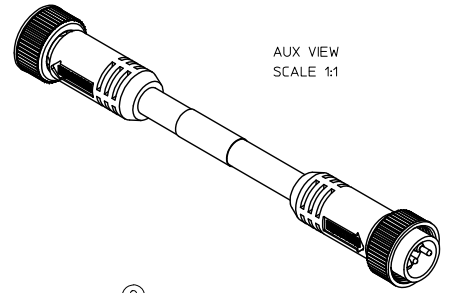
Click to view price, real time Inventory, Delivery & Lifecycle Information:

[Molex Connector Corporation](#)  
[1300100147](#)

For any questions, you can email us directly:  
[sales@integrated-circuit.com](mailto:sales@integrated-circuit.com)

PART NUMBER	ENGINEERING NO.	LENGTH
1300100147	112020A01F060	6.00' +2.19" - 0 [ 1.8M +55.6mm - 0 ]
1300100152	112020A01F120	12.00' +3.50" - 0 [ 3.7M +88.9mm - 0 ]
1300100159	112020A01F200	20.00' +6.50" - 0 [ 6.1M +165.1mm - 0 ]

- NOTES:
1. MATERIALS: SEE TABLE
  2. FINISHES: SEE TABLE
  3. CABLE: #16/2 ST00W/ST PVC
  4. ELECTRICAL DATA:  
MAX. VOLTAGE: 600 VAC/VDC  
MAX. CURRENT: 13 AMPS
  5. ENVIRONMENTAL:  
PROTECTION IP 67  
TEMPERATURE RANGE: -20 TO 105 C
  6. WRAP LABEL IS MARKED WITH P/N, DATE CODE, VOLTAGE & AMPERAGE
  7. ASSEMBLY IS RoHS COMPLIANT



ITEM	QTY.	DESCRIPTION	MATERIAL	FINISH
10	1	LABEL	MYLAR	BLACK/YELLOW
9	2	OVERMOLD	PVC	YELLOW
8	2	FRICTION RING	NYLON	WHITE
7	2	COUPLING NUT	ZINC DIECAST	BLACK E-COAT
6	2	SOCKET SLEEVE	STAINLESS STEEL	
5	2	CONTACT SOCKET	BRASS	GOLD OVER NICKEL
4	2	CONTACT PIN	BRASS	GOLD OVER NICKEL
3	1	FEMALE INSERT, 2 POLE	PVC	YELLOW
2	1	MALE INSERT, 2 POLE	PVC	YELLOW
1	1	CABLE, ST00W/ST #16/2	PVC JACKET	YELLOW

RELEASED DRAWING EC NO: WNA2009-06/16 DRW: L. HARTMANN 2009/06/17 CHK: R. STONE APPR: J. MURPHY 2009/06/14 DESCRIPTION: DBL END CORDSET FEMALE/MALE 2P	QUALITY SYMBOLS	GENERAL TOLERANCES (UNLESS SPECIFIED)	DIMENSION STYLE	SCALE	DESIGN UNITS	THIRD ANGLE PROJECTION
	0.15 0.10 0.05	mm INCH 4 PLACES ± --- ± --- 3 PLACES ± --- ± .005 2 PLACES ± --- ± .010 1 PLACE ± --- ± .020 ANGULAR ± 1/2°	IN/MM DRAWN BY DATE L. HARTMANN 2009/06/17 CHECKED BY DATE R. STONE 2009/06/30 APPROVED BY DATE J. MURPHY 2009/06/30	2:1	INCH	MINI-CHANGE CORDSET 2 POLE MA/FE ST/ST #16/2 YELLOW ST00W/ST
	DRAFT WHERE APPLICABLE MUST REMAIN WITHIN DIMENSIONS	SEE CHART SIZE C	MATERIAL NO. DOCUMENT NO. SD-130010-003	MOLEX INCORPORATED	SHEET NO. 1 OF 1	
	THIS DRAWING CONTAINS INFORMATION THAT IS PROPRIETARY TO MOLEX INCORPORATED AND SHOULD NOT BE USED WITHOUT WRITTEN PERMISSION					