

## Excellent Integrated System Limited

Stocking Distributor

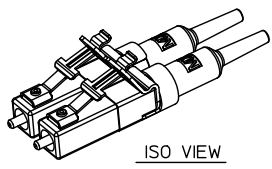
Click to view price, real time Inventory, Delivery & Lifecycle Information:

[Molex Connector Corporation](#)  
[1063972202](#)

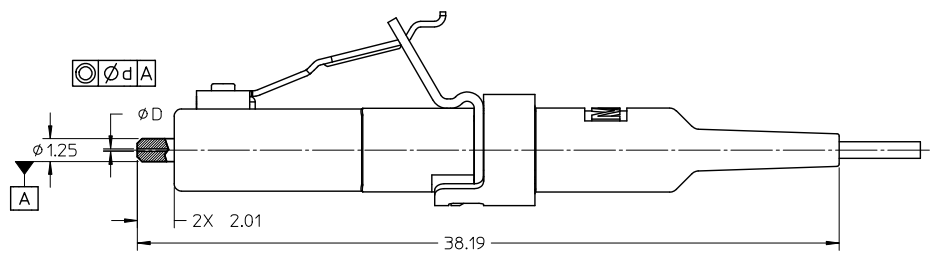
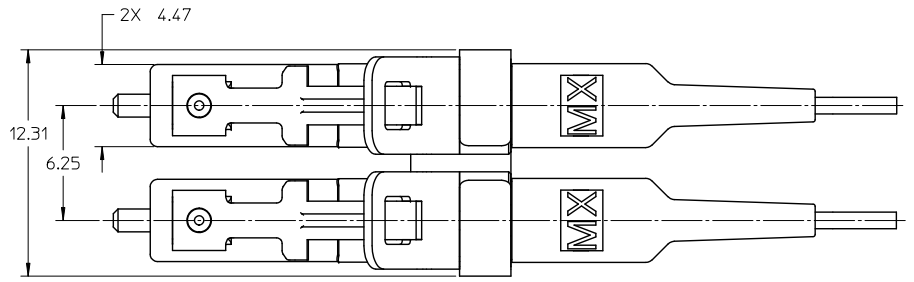
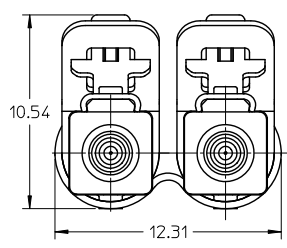
For any questions, you can email us directly:

[sales@integrated-circuit.com](mailto:sales@integrated-circuit.com)

CONNECTOR P/N	φD (μm)	φd (μm)	BOOT COLOR	CABLE TYPE
106397-2202	125.50 <sup>+0.50</sup> <sub>0</sub>	0.5	BLUE	SM
106397-2402	127.0 <sup>+3.00</sup> <sub>0</sub>	3.0	WHITE	MM



ISO VIEW  
SCALE 2:1



NOTES:

1. ALL DIMENSIONS ARE FOR REFERENCE ONLY.
2. DUST CAPS ARE NOT SHOWN.

ENTER DESCRIPTION EC NO: ME2010-0307 DRAWN: JSZWCZYK 2010/01/25 CHKD: 2010/01/18 APPR: IGUMIN 2010/01/25 REV A	QUALITY SYMBOLS ▽=0 ▽=0	GENERAL TOLERANCES (UNLESS SPECIFIED)		DIMENSION STYLE MM ONLY		SCALE 5:1	DESIGN UNITS METRIC	THIRD ANGLE PROJECTION	
		4 PLACES ± --- ± ---	3 PLACES ± --- ± ---	DRAWN BY JSZWCZYK	DATE 2010/01/11	TITLE LC2+ DUPLEX CONNECTOR FOR BARE FIBER			
		2 PLACES ± --- ± ---	1 PLACE ± --- ± ---	CHECKED BY WCHEN	DATE 2009/05/08	APPROVED BY IGUMIN 2010/01/25			
		ANGULAR ±1/2°		DRAFT WHERE APPLICABLE MUST REMAIN WITHIN DIMENSIONS		MATERIAL NO. SEE TABLE		DOCUMENT NO. SD-106397-2X02	