

Excellent Integrated System Limited

Stocking Distributor

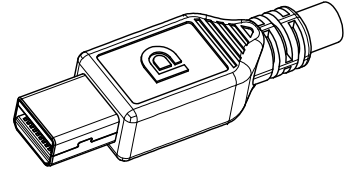
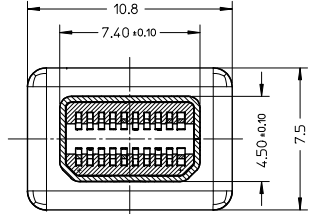
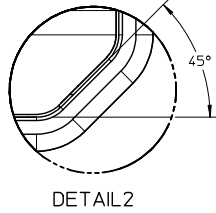
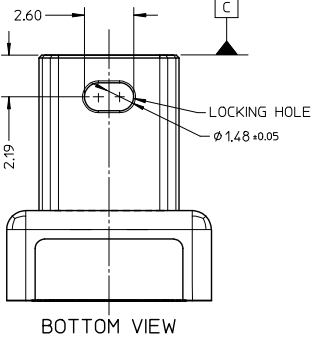
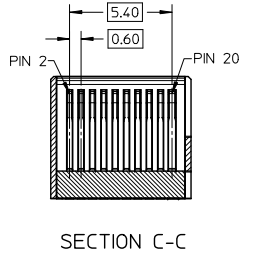
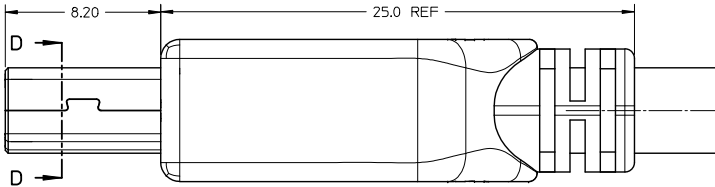
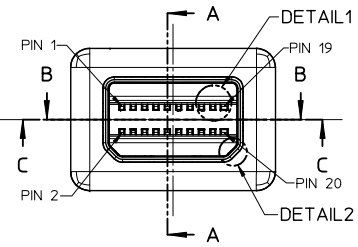
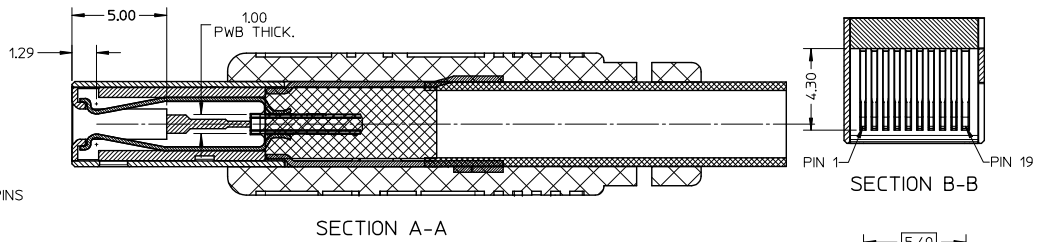
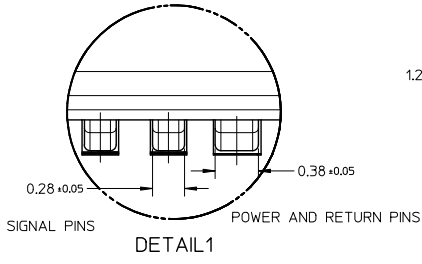
Click to view price, real time Inventory, Delivery & Lifecycle Information:

[Molex Connector Corporation](#)
[1050610005](#)

For any questions, you can email us directly:

sales@integrated-circuit.com

10 9 8 7 6 5 4 3 2 1



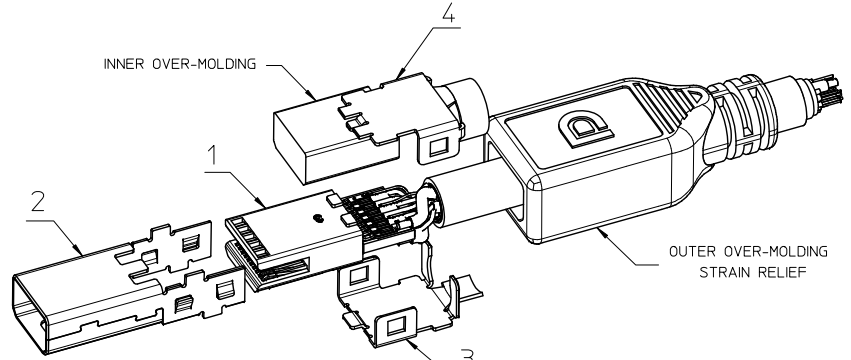
NEW PRODUCT EC NO: SH2010-0088 DRAWN BY: DRWANKWEL CHECKED BY: CHYKQZhang APPR: XJSUNG 2009/09/14 2009/09/14 2009/09/21	QUALITY SYMBOLS ▽=0 ▽=0	GENERAL TOLERANCES (UNLESS SPECIFIED) <table border="1"> <tr> <th></th> <th>mm</th> <th>INCH</th> </tr> <tr> <td>4 PLACES</td> <td>± ---</td> <td>± ---</td> </tr> <tr> <td>3 PLACES</td> <td>± ---</td> <td>± ---</td> </tr> <tr> <td>2 PLACES</td> <td>± 0.25</td> <td>± ---</td> </tr> <tr> <td>1 PLACE</td> <td>± 0.30</td> <td>± ---</td> </tr> <tr> <td>ANGULAR</td> <td>± ---</td> <td>°</td> </tr> </table>		mm	INCH	4 PLACES	± ---	± ---	3 PLACES	± ---	± ---	2 PLACES	± 0.25	± ---	1 PLACE	± 0.30	± ---	ANGULAR	± ---	°	DIMENSION STYLE MM ONLY	SCALE 5:1	DESIGN UNITS METRIC	THIRD ANGLE PROJECTION
		mm	INCH																					
	4 PLACES	± ---	± ---																					
	3 PLACES	± ---	± ---																					
2 PLACES	± 0.25	± ---																						
1 PLACE	± 0.30	± ---																						
ANGULAR	± ---	°																						
DRAWN BY: KLAUS WEI CHECKED BY: ROST ZHANG APPROVED BY: HARVEY WANG DATE: 2008/03/31 DATE: 2008/03/31 DATE: 2008/03/31	TITLE MINI DISPLAY PORT PLUG	MOLEX INCORPORATED																						
MATERIAL NO. SEE SHEET 2	DOCUMENT NO. SD-105061-200	SHEET NO. 1 OF 7																						
DRAFT WHERE APPLICABLE MUST REMAIN WITHIN DIMENSIONS THIS DRAWING CONTAINS INFORMATION THAT IS PROPRIETARY TO MOLEX INCORPORATED AND SHOULD NOT BE USED WITHOUT WRITTEN PERMISSION																								

9 8 7 6 5 4 3 2 1

TOP ROW			BOTTOM ROW		
PIN NUMBER	SIGNAL TYPE	PIN NAME	PIN NUMBER	SIGNAL TYPE	PIN NAME
1	GND	GND	2	IN	HOT PLUG DETECT
3	OUT	ML_LANE 0(p)	4	CONFIG	CONFIG 1
5	OUT	ML_LANE 0(n)	6	CONFIG	CONFIG 2
7	GND	GND	8	GND	GND
9	OUT	ML_LANE 1(p)	10	OUT	ML_LANE 3(p)
11	OUT	ML_LANE 1(n)	12	OUT	ML_LANE 3(n)
13	GND	GND	14	GND	GND
15	OUT	ML_LANE 2(p)	16	I/O	AUX_CH(p)
17	OUT	ML_LANE 2(n)	18	I/O	AUX_CH(n)
19	RTN	RETURN	20	POWER OUT	DP_PWR

ITEM	PART NAME	PART NUMBER	QTY'S
1	SUB-ASSEMBLY	WHITE	105061-2200
		BLACK	105061-2100
2	MAIN-SHELL	105061-0005	1
3	BOTTOM SHELL	105061-0006	1
4	TOP-SHELL	105061-0007	1

- NOTES:
- MATERIAL:
 - 1.1. PLASTIC: HIGH TEMPERATURE THERMOPLASTICS.
 - 1.2. TERMINAL: PHOSPHOR BRONZE.
 - 1.3. SHIELD SHELL: COPPER ALLOY.
 - 1.4. OTHER SHELL: COPPER ALLOY.
 - PLATING:
 - 2.1. TERMINAL:
 - 2.1.1. UNDERPLATING: NICKEL 1.30 MICROMETER MIN.
 - 2.1.2. CONTACT AREA: GOLD 0.76 MICROMETER MIN.
 - 2.1.3. SOLDER AREA: GOLD FLASH.
 - 2.2. METAL SHELL: NICKEL 1.30 MICROMETER MIN.
 - MECHANICAL PROPERTIES:
 - 3.1. TERMINAL RETENTION FORCE: 0.5 Kgf MIN.
 - 3.2. MATING FORCE: 4.0 Kgf MAX.
 - 3.3. NORMAL FORCE: 25gf MIN.
 - 3.4. DURABILITY: 1500 CYCLES.
 - ELECTRICAL PROPERTIES:
 - 4.1. APPLIED VOLTAGE RATING: 30V AC (RMS)
 - 4.2. CONTACT CURRENT RATING: 0.5 Amp
 - 4.3. DIELECTRIC WITHSTANDING: 200V AC MIN.
 - 4.4. INSULATION RESISTANCE: 100 Megaohm MIN.
 - ENVIRONMENTAL PROPERTIES:
 - 5.1. OPERATING TEMPERATURE: -20°C TO 85°C.
 - 5.2. BE APPLICABLE TO HANDWORK SOLDER & IR-REFLOW PROCESS
 - THIS PRODUCT COMPLIANT TO RoHS DIRECTIVE 2002/95/EC, AND ELV DIRECTIVE 2000/53/EC.

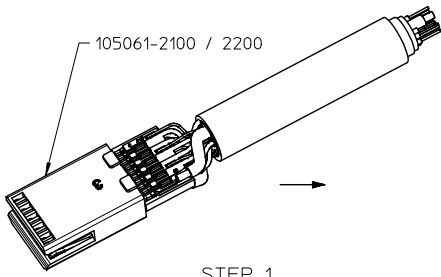


NOTES:
OVER-MOLDING ONLY FOR REFERENCE

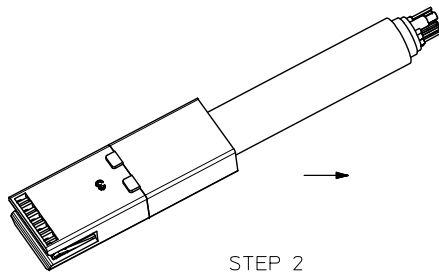
NEW PRODUCT EC NO: SH2010-0088 DRAWN BY: IDRWAN/CHEI CHECKED BY: CHYK/RZHANG APPR: XJ/SJONG 2009/09/14 2009/09/14 2009/09/21	QUALITY SYMBOLS	GENERAL TOLERANCES (UNLESS SPECIFIED)	DIMENSION STYLE	SCALE	DESIGN UNITS	THIRD ANGLE PROJECTION																			
	▼=0 ▽=0	<table border="1"> <thead> <tr> <th></th> <th>mm</th> <th>INCH</th> </tr> </thead> <tbody> <tr> <td>4 PLACES</td> <td>±---</td> <td>±---</td> </tr> <tr> <td>3 PLACES</td> <td>±---</td> <td>±---</td> </tr> <tr> <td>2 PLACES</td> <td>±---</td> <td>±---</td> </tr> <tr> <td>1 PLACE</td> <td>±---</td> <td>±---</td> </tr> <tr> <td colspan="3">ANGULAR ±---°</td> </tr> </tbody> </table>		mm	INCH	4 PLACES	±---	±---	3 PLACES	±---	±---	2 PLACES	±---	±---	1 PLACE	±---	±---	ANGULAR ±---°			MM ONLY	N/A	METRIC	DRAWN BY: KLAUS WEI DATE: 2008/03/31 CHECKED BY: ROST ZHANG DATE: 2008/03/31 APPROVED BY: HARVEY WANG DATE: 2008/03/31	TITLE: MINI DISPLAY PORT PLUG Molex MOLEX INCORPORATED DOCUMENT NO. SD-105061-200 SHEET NO. 2 OF 7
		mm	INCH																						
	4 PLACES	±---	±---																						
3 PLACES	±---	±---																							
2 PLACES	±---	±---																							
1 PLACE	±---	±---																							
ANGULAR ±---°																									
DRAFT WHERE APPLICABLE MUST REMAIN WITHIN DIMENSIONS	SEE TABLE	THIS DRAWING CONTAINS INFORMATION THAT IS PROPRIETARY TO MOLEX INCORPORATED AND SHOULD NOT BE USED WITHOUT WRITTEN PERMISSION																							

10 9 8 7 6 5 4 3 2 1

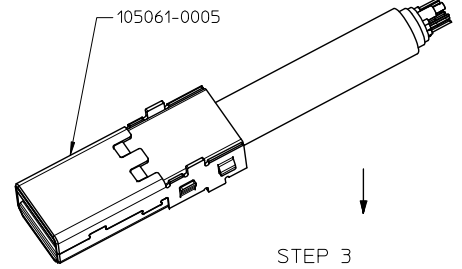
ASSEMBLY PROCEDURE



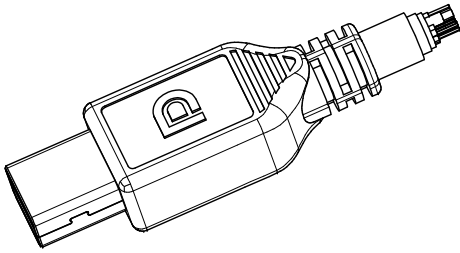
STEP 1
SOLDER WIRE



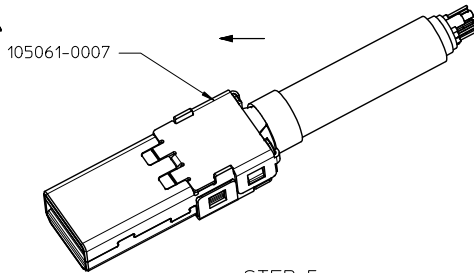
STEP 2
INNER OVER-MOLDING



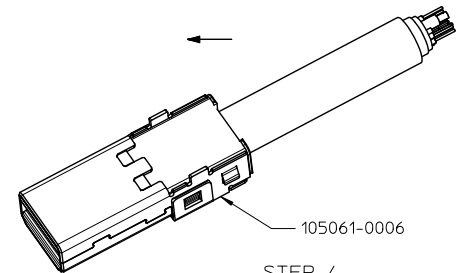
STEP 3
ASSEMBLE MAIN SHELL



STEP 4
ASSEMBLE BOTTOM SHELL



STEP 5
ASSEMBLE TOP SHELL AND CRIMPING

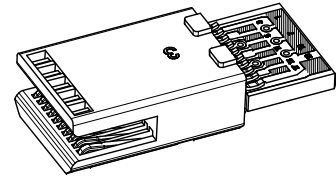
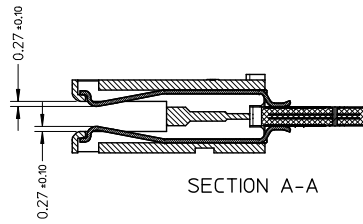
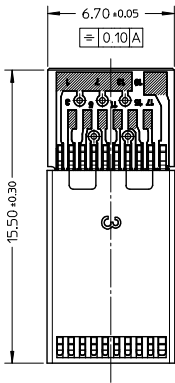


STEP 6
OUTER OVER-MOLDING

NEW PRODUCT EC NO. SH2010-0088 DR: WANG WEL CHYK: RZPANG APPR: XJ.SONG 2009/09/14 2009/09/14 2009/09/14	QUALITY SYMBOLS ▽=0 ▽=0	GENERAL TOLERANCES (UNLESS SPECIFIED)		DIMENSION STYLE MM ONLY		SCALE N/A	DESIGN UNITS METRIC	THIRD ANGLE PROJECTION	
		4 PLACES	±---	±---	DRAWN BY	DATE	MINI DISPLAY PORT PLUG		
		3 PLACES	±---	±---	CHECKED BY	DATE			
		2 PLACES	±---	±---	ROST ZHANG	2008/03/31			
1 PLACE	±---	±---	APPROVED BY	DATE	MOLEX INCORPORATED				
		ANGULAR	±---	°	HARVEY WANG	2008/03/31			
DRAFT WHERE APPLICABLE MUST REMAIN WITHIN DIMENSIONS		MATERIAL NO. SEE ABOVE		DOCUMENT NO. SD-105061-200		SHEET NO. 3 OF 7			
				SIZE A3		THIS DRAWING CONTAINS INFORMATION THAT IS PROPRIETARY TO MOLEX INCORPORATED AND SHOULD NOT BE USED WITHOUT WRITTEN PERMISSION			

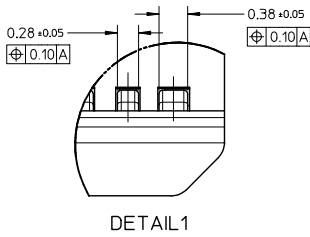
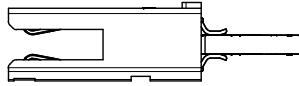
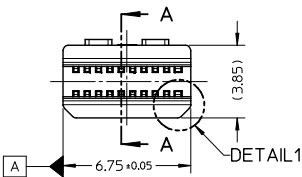
9 8 7 6 5 4 3 2 1

10 9 8 7 6 5 4 3 2 1



NOTES:

1. MATERIAL:
PLASTIC: LCP ,UL94V-0 .
METAL: COPPER OR COPPER ALLOY.
2. PACKAGING SPECIFICATION : PK-105061-001.
3. PRODUCT SPECIFICATION: PS-105061-001.

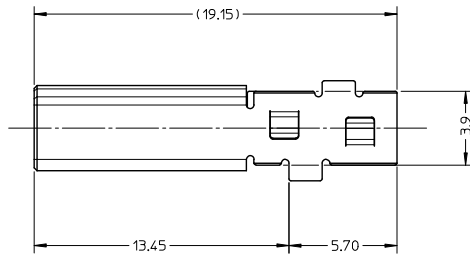
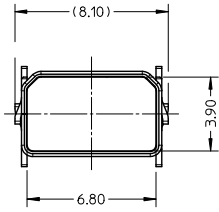


105061-2200	LCP	WHITE
105061-2100	LCP	BLACK
PART NUMBER	RESIN TYPE	COLOR
SCALE 5:1	DESIGN UNITS METRIC	THIRD ANGLE PROJECTION
SUB-ASSEMBLY		
MOLEX INCORPORATED		
DOCUMENT NO.	105061-2*00	SHEET NO. 4 OF 7
SD-105061-200		

NEW PRODUCT EC NO: SH2010-0088 DRAWN BY: DRWANGWEI CHECKED BY: CHYKZhang APPR: XJ.SONG	2009/09/14	2009/09/14	2009/09/14
	DESCRIPTION	REV	DATE
QUALITY SYMBOLS	▽=0	▽=0	
GENERAL TOLERANCES (UNLESS SPECIFIED)	4 PLACES	± ---	± ---
	3 PLACES	± ---	± ---
	2 PLACES	± 0.10	± ---
	1 PLACE	± 0.15	± ---
	ANGULAR	± ---°	± ---°
DRAFT WHERE APPLICABLE MUST REMAIN WITHIN DIMENSIONS			
SIZE	A3		

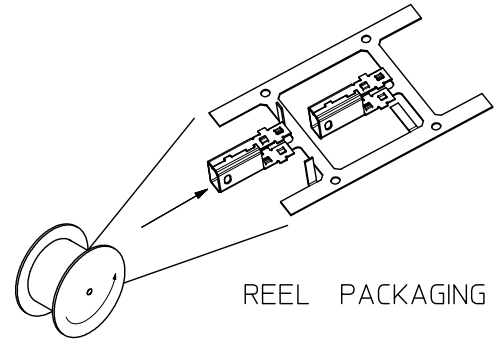
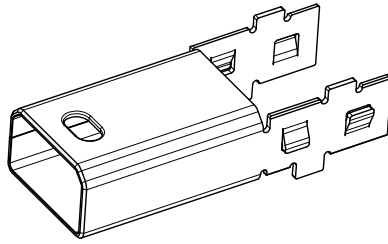
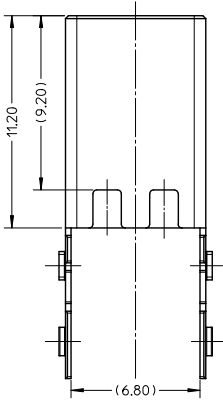
10 9 8 7 6 5 4 3 2 1

10 9 8 7 6 5 4 3 2 1



NOTES:

1. MATERIALS: COPPER ALLOY
THICKNESS: 0.30±0.01mm.
2. FINISH: NICKEL 1.30 MICROMETRE MIN.
3. COMPLIANT TO RoHS DIRECTIVE 2002/95/EC AND ELV DIRECTIVE 2000/53/EC.
4. PACKAGING QUANTITIES : 800 PCS PER REEL.

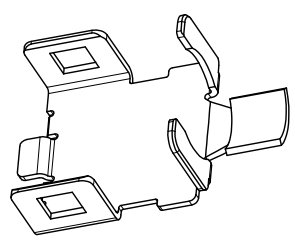
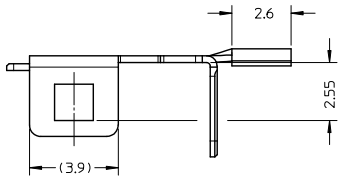


REEL PACKAGING

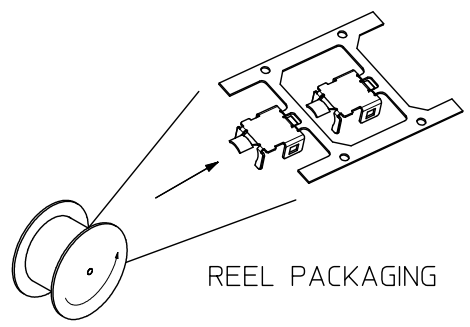
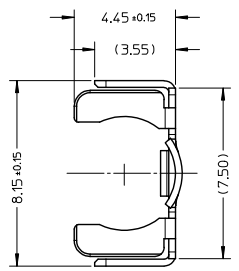
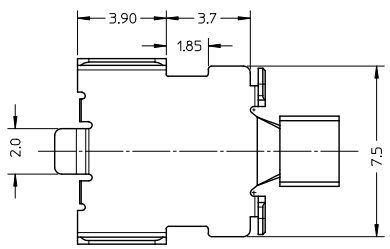
NEW PRODUCT EC NO: SH2010-0088 DRAWN BY: DRWANKUOEL CHECKED BY: CHYKQZhang APPR: XJSong DATE: 2009/09/14 DATE: 2009/09/14 DATE: 2009/09/14	QUALITY SYMBOLS ▽=0 ▽=0	GENERAL TOLERANCES (UNLESS SPECIFIED) <table border="1"> <thead> <tr> <th></th> <th>mm</th> <th>INCH</th> </tr> </thead> <tbody> <tr> <td>4 PLACES</td> <td>±---</td> <td>±---</td> </tr> <tr> <td>3 PLACES</td> <td>±---</td> <td>±---</td> </tr> <tr> <td>2 PLACES</td> <td>±0.10</td> <td>±---</td> </tr> <tr> <td>1 PLACE</td> <td>±0.15</td> <td>±---</td> </tr> <tr> <td>ANGULAR</td> <td>±---</td> <td>°</td> </tr> </tbody> </table>		mm	INCH	4 PLACES	±---	±---	3 PLACES	±---	±---	2 PLACES	±0.10	±---	1 PLACE	±0.15	±---	ANGULAR	±---	°	DIMENSION STYLE MM ONLY	SCALE 5:1	DESIGN UNITS METRIC	THIRD ANGLE PROJECTION
		mm	INCH																					
	4 PLACES	±---	±---																					
	3 PLACES	±---	±---																					
2 PLACES	±0.10	±---																						
1 PLACE	±0.15	±---																						
ANGULAR	±---	°																						
DRAWN BY: KLAUS WEI CHECKED BY: ROST ZHANG APPROVED BY: HARVEY WANG DATE: 2008/03/31 DATE: 2008/03/31 DATE: 2008/03/31	TITLE MAIN SHELL		MOLEX INCORPORATED																					
MATERIAL NO. 105061-0005	DRAFT WHERE APPLICABLE MUST REMAIN WITHIN DIMENSIONS		DOCUMENT NO. SD-105061-200	SHEET NO. 5 OF 7																				
SIZE A3	THIS DRAWING CONTAINS INFORMATION THAT IS PROPRIETARY TO MOLEX INCORPORATED AND SHOULD NOT BE USED WITHOUT WRITTEN PERMISSION																							

9 8 7 6 5 4 3 2 1

10 9 8 7 6 5 4 3 2 1



- NOTES:
1. MATERIALS: COPPER ALLOY.
THICKNESS: 0.30±0.01mm.
 2. FINISH: NICKEL 1.30 MICROMETRE MIN.
 3. COMPLIANT TO RoHS DIRECTIVE 2002/95/EC AND ELV DIRECTIVE 2000/53/EC.
 4. PACKAGING QUANTITIES : 1500 PCS PER REEL.

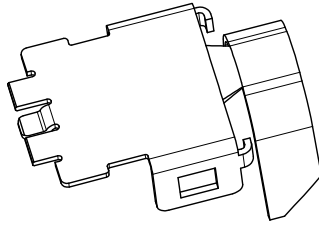
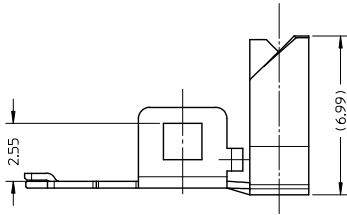


REEL PACKAGING

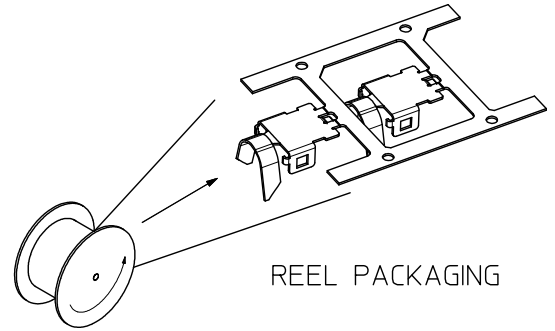
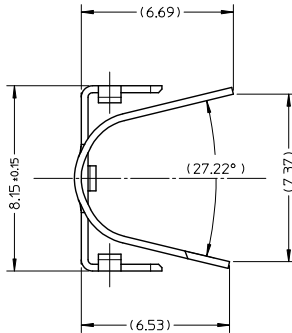
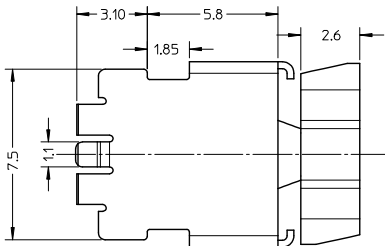
NEW PRODUCT EC NO: SH2010-0088 DRAWN BY: DRWANKWEL CHKD BY: CHYKDRZHANG APPR: XJSJG	QUALITY SYMBOLS ▽=0 ▽=0	GENERAL TOLERANCES (UNLESS SPECIFIED)		DIMENSION STYLE MM ONLY		SCALE 5:1	DESIGN UNITS METRIC	THIRD ANGLE PROJECTION
		4 PLACES ± --- ± ---	3 PLACES ± --- ± ---	DRAWN BY KLAUS WEI	DATE 2008/03/31	TITLE BOTTOM SHELL		
REV B	DESCRIPTION	2 PLACES ± 0.10 ± ---	1 PLACE ± 0.15 ± ---	CHECKED BY ROST ZHANG	DATE 2008/03/31	MATERIAL NO. 105061-0006		
		ANGULAR ± --- °		APPROVED BY HARVEY WANG	DATE 2008/03/31	DOCUMENT NO. SD-105061-200	SHEET NO. 6 OF 7	
DRAFT WHERE APPLICABLE MUST REMAIN WITHIN DIMENSIONS		THIS DRAWING CONTAINS INFORMATION THAT IS PROPRIETARY TO MOLEX INCORPORATED AND SHOULD NOT BE USED WITHOUT WRITTEN PERMISSION						

9 8 7 6 5 4 3 2 1

10 9 8 7 6 5 4 3 2 1



- NOTES:
1. MATERIALS: COPPER ALLOY.
THICKNESS: 0.30±0.01mm.
 2. FINISH: NICKEL 1.30 MICROMETRE MIN.
 3. COMPLIANT TO RoHS DIRECTIVE 2002/95/EC AND ELV DIRECTIVE 2000/53/EC.
 4. PACKAGING QUANTITIES : 1500 PCS PER REEL.



REEL PACKAGING

NEW PRODUCT EC NO: SH2010-0088 DRAWN BY: DRWANKWEL CHECKED BY: CHYKZRHANG APPR: XJSUNG DATE: 2009/09/14 DATE: 2009/09/14 DATE: 2009/09/14	QUALITY SYMBOLS ▽=0 ▽=0	GENERAL TOLERANCES (UNLESS SPECIFIED) <table border="1"> <thead> <tr> <th></th> <th>mm</th> <th>INCH</th> </tr> </thead> <tbody> <tr> <td>4 PLACES</td> <td>±---</td> <td>±---</td> </tr> <tr> <td>3 PLACES</td> <td>±---</td> <td>±---</td> </tr> <tr> <td>2 PLACES</td> <td>±0.10</td> <td>±---</td> </tr> <tr> <td>1 PLACE</td> <td>±0.15</td> <td>±---</td> </tr> <tr> <td>ANGULAR</td> <td>±---</td> <td>°</td> </tr> </tbody> </table>		mm	INCH	4 PLACES	±---	±---	3 PLACES	±---	±---	2 PLACES	±0.10	±---	1 PLACE	±0.15	±---	ANGULAR	±---	°	DIMENSION STYLE MM ONLY DRAWN BY: KLAUS WEI DATE: 2008/03/31 CHECKED BY: ROST ZHANG DATE: 2008/03/31 APPROVED BY: HARVEY WANG DATE: 2008/03/31	SCALE 5:1 DESIGN UNITS METRIC THIRD ANGLE PROJECTION	TITLE TOP SHELL
		mm	INCH																				
4 PLACES	±---	±---																					
3 PLACES	±---	±---																					
2 PLACES	±0.10	±---																					
1 PLACE	±0.15	±---																					
ANGULAR	±---	°																					
REV B	DRAFT WHERE APPLICABLE MUST REMAIN WITHIN DIMENSIONS	MATERIAL NO. 105061-0007	MOLEX INCORPORATED DOCUMENT NO. SD-105061-200	SHEET NO. 7 OF 7	THIS DRAWING CONTAINS INFORMATION THAT IS PROPRIETARY TO MOLEX INCORPORATED AND SHOULD NOT BE USED WITHOUT WRITTEN PERMISSION																		

9 8 7 6 5 4 3 2 1