

Excellent Integrated System Limited

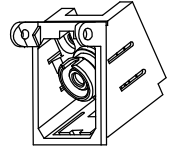
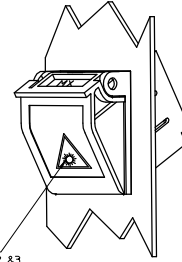
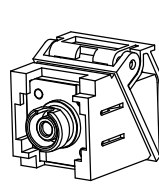
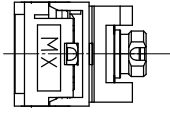
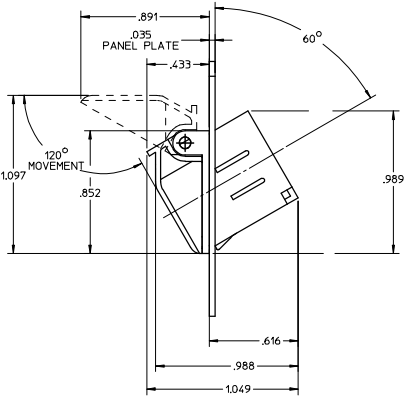
Stocking Distributor

Click to view price, real time Inventory, Delivery & Lifecycle Information:

[Molex Connector Corporation](#)
[1060043261](#)

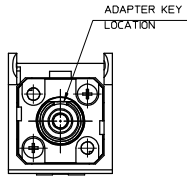
For any questions, you can email us directly:

sales@integrated-circuit.com

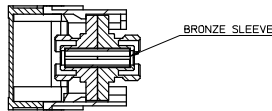
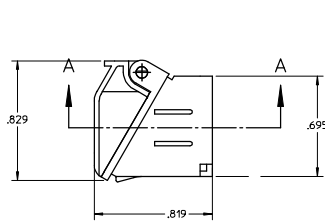


LABEL
SEE NOTES 2 & 3

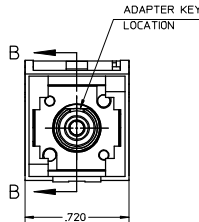
DOOR REMOVED



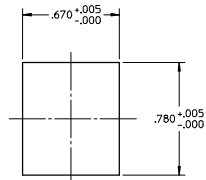
DOOR REMOVED



SECTION A-A



SECTION B-B



RECOMMENDED
MOUNTING HOLE
IN THE PANEL PLATE

NOTES:

1. ALL DIMENSIONS ARE FOR REFERENCE ONLY.
2. LABEL AND ADAPTER SHOULD BE PACKAGED TOGETHER IN A POLY BAG.
3. LABEL TO BE INSTALLED ON THE DOOR BY USER.

ENTER DESCRIPTION EC NO: MF2008-0599 DRAWN: SZEWZYK 2008/03/31 CHKD: 2008/03/31 APPR: KATARZYNE 2008/03/31 REV	QUALITY SYMBOLS ▽=0 ▽=0	GENERAL TOLERANCES (UNLESS SPECIFIED)		DIMENSION STYLE INCH ONLY		SCALE 2:1	DESIGN UNITS INCH	THIRD ANGLE PROJECTION
		4 PLACES ± --- ± ---	3 PLACES ± --- ± ---	2 PLACES ± --- ± ---	1 PLACE ± --- ± ---	DRAWN BY PGIBLIN	DATE 2005/11/08	TITLE FC/FC SMPX BEZEL ADPT,PU KIT W/PUSH TAB (BLACK)
ANGULAR ± 1/2°		DRAFT WHERE APPLICABLE MUST REMAIN WITHIN DIMENSIONS		MATERIAL NO. 1060043261		DOCUMENT NO. SD-106004-3261		SHEET NO. 1 OF 1
THIS DRAWING CONTAINS INFORMATION THAT IS PROPRIETARY TO MOLEX INCORPORATED AND SHOULD NOT BE USED WITHOUT WRITTEN PERMISSION								